



UK Office

Everest Biotech Ltd

Cherwell Innovation Centre
77 Heyford Park
Upper Heyford
Oxfordshire
OX25 5HD
UK

Enquiries:

info@everestbiotech.com

Sales:

sales@everestbiotech.com

Tech support:

support@everestbiotech.com

Tel: +44 (0)1869 238326

www.everestbiotech.com

**Research Use Only. Not for
diagnostic or therapeutic use.**

EB06950 - Goat Anti-INDO / IDO Antibody

Size: 100µg specific antibody in 200µl



Target Protein

Principal Names: INDO, indoleamine-pyrrole 2,3 dioxygenase, HGNC:6059, CD107B, IDO, Indoleamine 2,3-dioxygenase, indole 2,3-dioxygenase, IDO1

Official Symbol: IDO1

Accession Number(s): NP_002155.1

Human GeneID(s): [3620](#)

Immunogen

Peptide with sequence CVLANWKKKDPNK, from the internal region of the protein sequence according to NP_002155.1.

Please note the [peptide](#) is available for sale.

Purification and Storage

Purified from goat serum by ammonium sulphate precipitation followed by antigen affinity chromatography using the immunizing peptide.

Supplied at 0.5 mg/ml in Tris saline, 0.02% sodium azide, pH7.3 with 0.5% bovine serum albumin.

Aliquot and store at -20°C. Minimize freezing and thawing.

Applications Tested

Peptide ELISA: antibody detection limit dilution 1:128000.

IHC: Paraffin embedded Human Placenta. Recommended concentration: 4-6µg/ml.

Species Reactivity

Tested: Human

Expected from sequence similarity: Human, Mouse, Rat, Dog

Specific Reference

This antibody has been successfully used in the following paper:

Radwa Ismail, Walaa A Negm, Eman H Basha, Fatma H Rizk, Nashwah G M

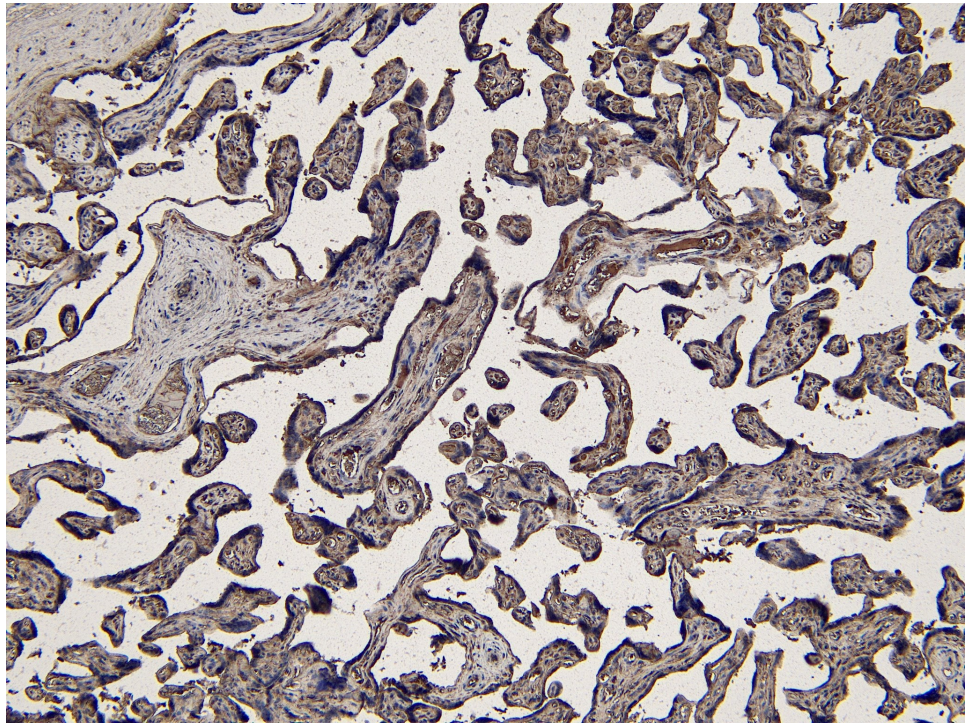
Attallah, Najla Altwaijry, Hoda Ali Ibrahim, Asmaa Fawzy Eltantawy, Alaa Elkordy, Aya

Osama, Sameh Magdeldin, Asmaa Ramadan Azzam

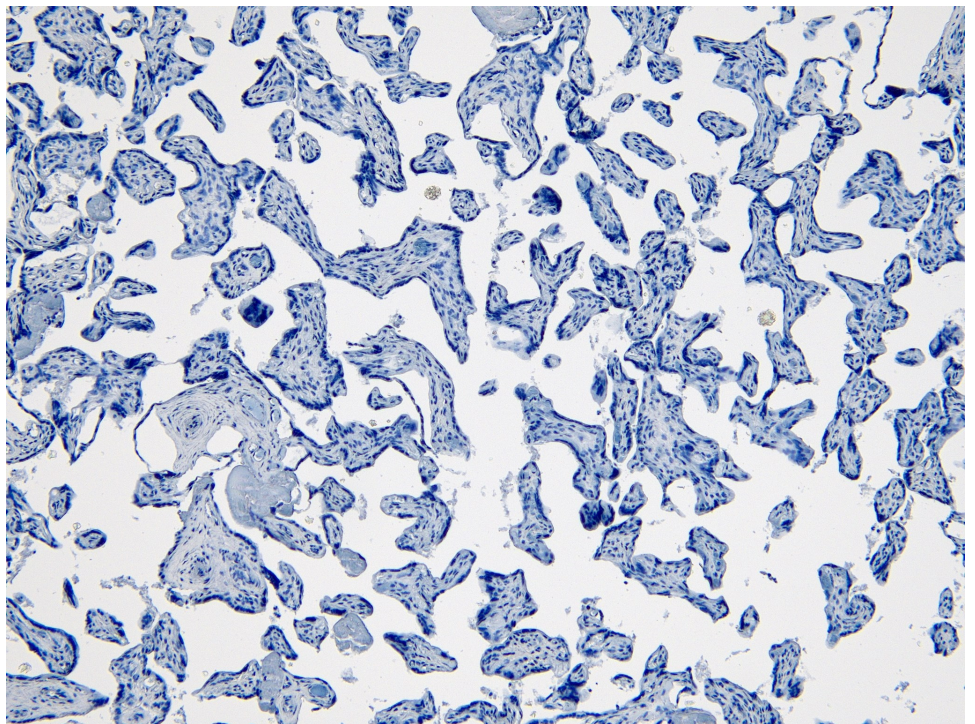
The potential neuroprotective effects of Spirulina platensis in a valproic acid-induced experimental model of autism in the siblings of albino rats: targeting PI3/AKT/mTOR signalling pathway

Nutr Neurosci. 2024 Jul 31:1-23.

PMID: 39083252



EB06950 (6µg/ml) staining of paraffin embedded Human Placenta. Heat induced antigen retrieval with citrate buffer pH 6, HRP-staining.



EB06950 Negative Control showing staining of paraffin embedded Human Placenta, with no primary antibody.