



International Office

Everest Biotech Ltd

Vector Laboratories, Inc.
6737 Mowry Ave
Newark, CA 94560
United States

Customer Service:

customerservice@vectorlabs.com

Technical Service:

technical@vectorlabs.com

Tel: +1 (800) 227-6666

www.everestbiotech.com

**Research Use Only. Not for
diagnostic or therapeutic use.**

EB09548 - Goat Anti-INDOL1 Antibody

Size: 100µg specific antibody in 200µl



Target Protein

Principal Names: IDO2, indoleamine 2,3-dioxygenase 2, INDOL1, indoleamine 2,3-dioxygenase-like 1 protein, indoleamine-pyrrole 2,3 dioxygenase-like 1

Official Symbol: IDO2

Accession Number(s): NP_919270.3; NP_001382135.1

Human GeneID(s): [169355](#)

Immunogen

Peptide with sequence C-RDKTLESILHPR, from the C Terminus of the protein sequence according to NP_919270.3; NP_001382135.1.

Please note the [peptide](#) is available for sale.

Purification and Storage

Purified from goat serum by ammonium sulphate precipitation followed by antigen affinity chromatography using the immunizing peptide.

Supplied at 0.5 mg/ml in Tris saline, 0.02% sodium azide, pH7.3 with 0.5% bovine serum albumin.

Aliquot and store at -20°C. Minimize freezing and thawing.

Applications Tested

Peptide ELISA: antibody detection limit dilution 1:64000.

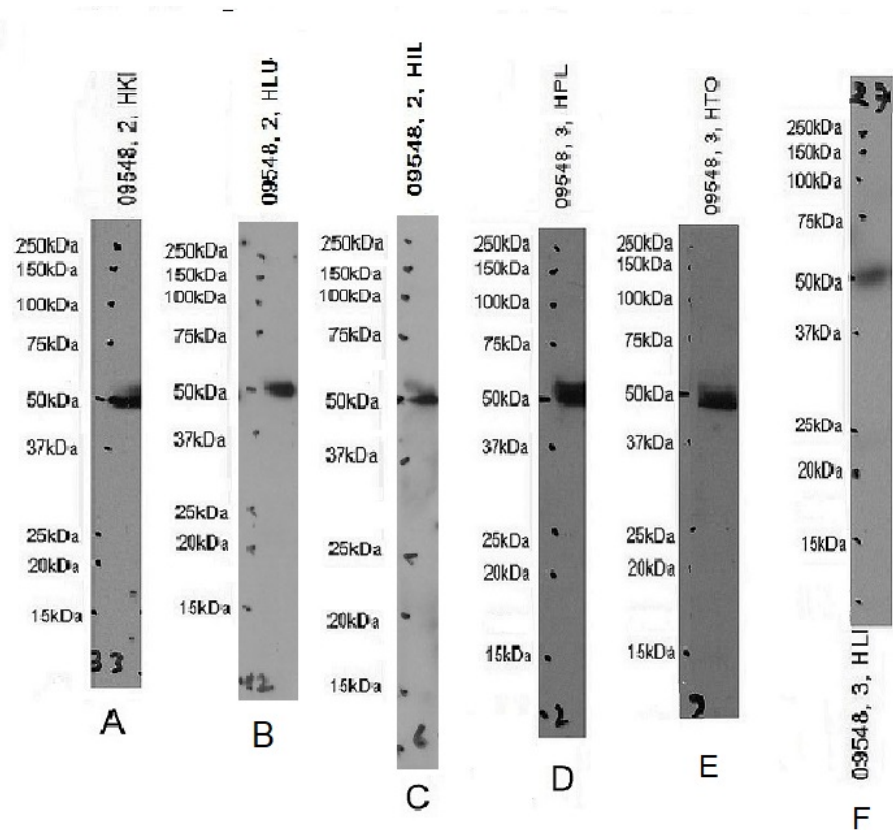
Western blot: Approx. 50kDa band observed in Human Kidney, Liver, Placenta, Tonsil, Lung and Ileum lysates (calculated MW of 47.07kDa according to NP_919270.3).

Recommended concentration: 1-3µg/ml. Primary incubation 1 hour at room temperature.

Species Reactivity

Tested: Human

Expected from sequence similarity: Human, Dog, Cow



EB09548 optimised QC. Primary incubation 1 hour at room temperature.
 Images A, B, C: Human Kidney, Lung, Ileum lysate at primary Ab concentration 2µg/ml,
 Images D, E, F: Human Placenta, Tonsil and Liver lysate at primary Ab concentration
 3µg/ml. (Loaded 35µg protein in RIPA buffer, per lane). Detected by chemiluminescence.