



UK Office

Everest Biotech Ltd

Cherwell Innovation Centre
77 Heyford Park
Upper Heyford
Oxfordshire
OX25 5HD
UK

Enquiries:

info@everestbiotech.com

Sales:

sales@everestbiotech.com

Tech support:

support@everestbiotech.com

Tel: +44 (0)1869 238326

www.everestbiotech.com

**Research Use Only. Not for
diagnostic or therapeutic use.**

EB11943 - Goat Anti-Inhibin alpha chain Antibody

Size: 100µg specific antibody in 200µl



Target Protein

Principal Names: INHA, inhibin, alpha, A-inhibin subunit, OTTHUMP00000065425, inhibin alpha chain

Official Symbol: INHA

Accession Number(s): NP_002182.1

Human GeneID(s): [3623](#)

Immunogen

Peptide with sequence C-RPLHVRTTSDGGYS, from the C Terminus of the protein sequence according to NP_002182.1.

Please note the [peptide](#) is available for sale.

Purification and Storage

Purified from goat serum by ammonium sulphate precipitation followed by antigen affinity chromatography using the immunizing peptide.

Supplied at 0.5 mg/ml in Tris saline, 0.02% sodium azide, pH7.3 with 0.5% bovine serum albumin.

Aliquot and store at -20°C. Minimize freezing and thawing.

Applications Tested

Peptide ELISA: antibody detection limit dilution 1:128000.

Western blot: Approx. 40kDa band observed in lysates of cell lines HepG2 and HeLa (calculated MW of 39.7kDa according to NP_002182.1). Recommended concentration: 0.5-1µg/ml. Primary incubation 1 hour at room temperature.

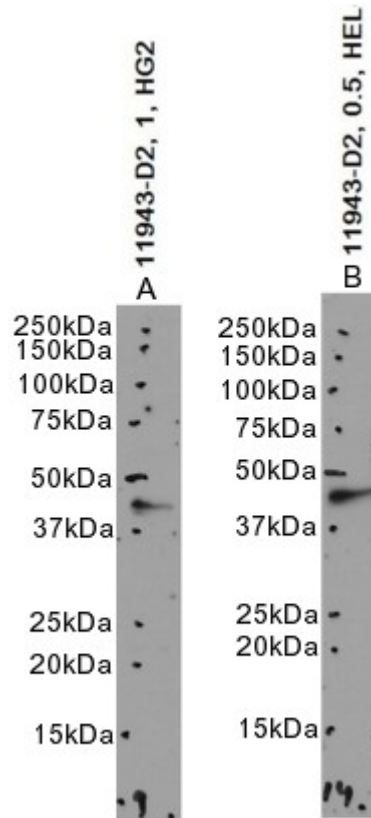
Immunofluorescence: Strong expression of the protein seen in HeLa and U2OS cells. Recommended concentration: 10µg/ml.

Flow Cytometry: Flow cytometric analysis of HeLa cells. Recommended concentration: 10ug/ml.

Species Reactivity

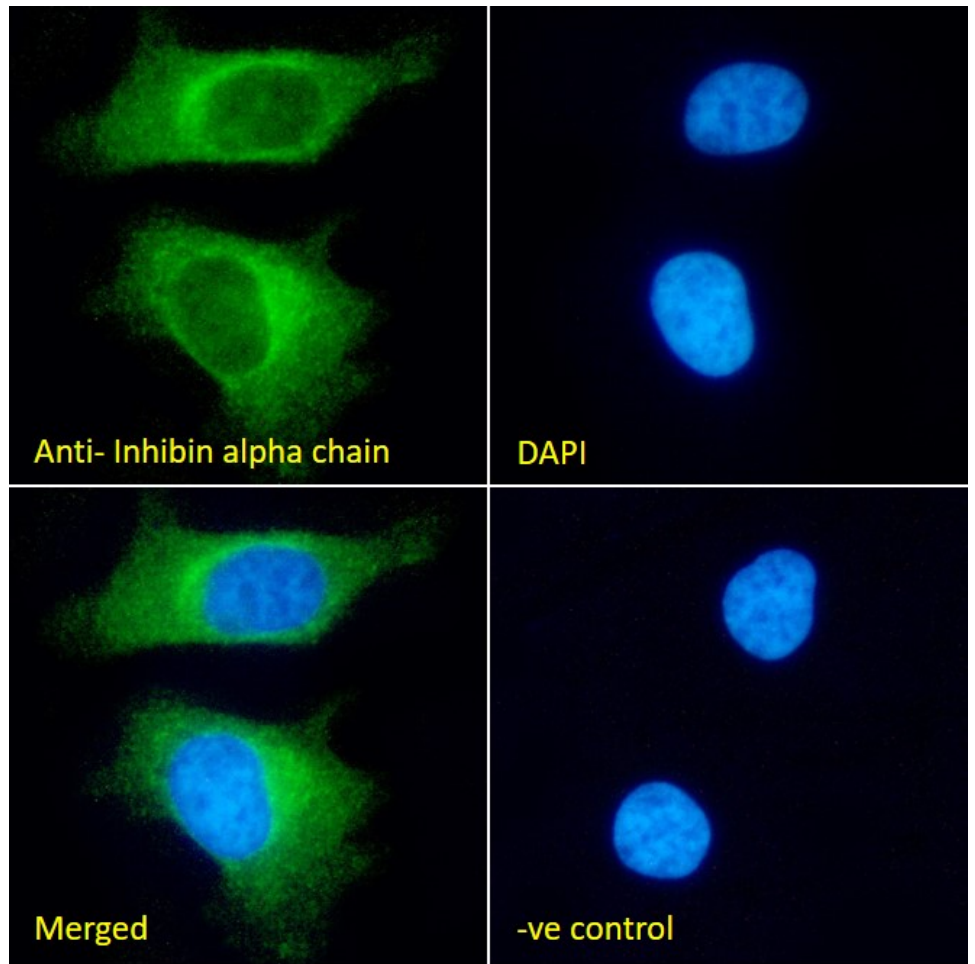
Tested: Human

Expected from sequence similarity: Human, Cow

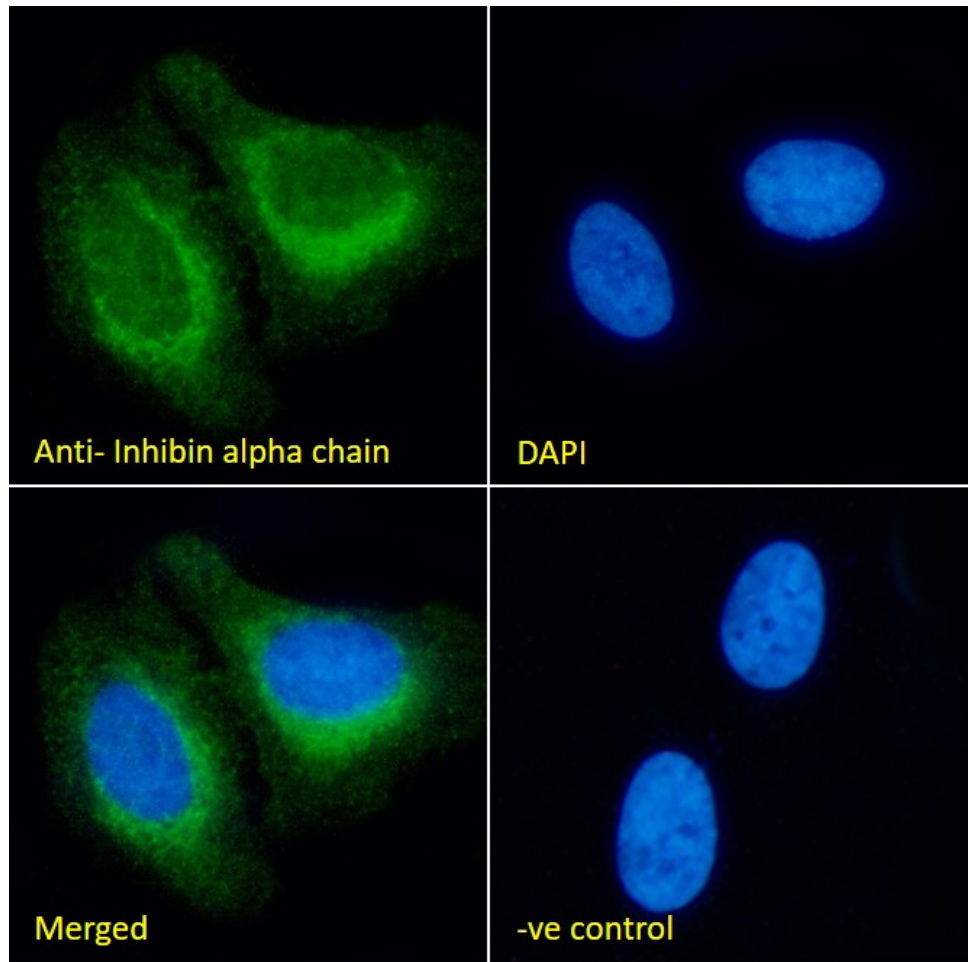


EB11943 optimised QC. Primary incubation 1 hour at room temperature.

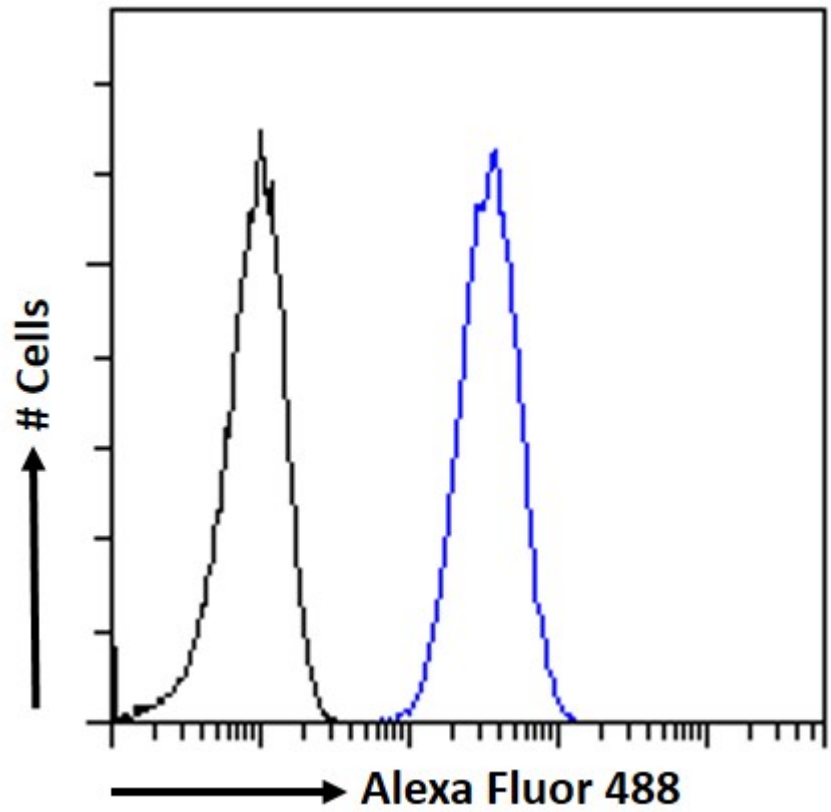
Image A: HepG2 cell lysate at primary Ab concentration 1ug/ml and Image B: HeLa cell lysate at primary Ab concentration 0.5ug/ml . (Loaded 35µg protein in RIPA buffer, per lane). Detected by chemiluminescence.



EB11943 Immunofluorescence analysis of paraformaldehyde fixed HeLa cells, permeabilized with 0.15% Triton. Primary incubation 1hr (10ug/ml) followed by Alexa Fluor 488 secondary antibody (2ug/ml), showing cytoplasmic and Golgi staining. The nuclear stain is DAPI (blue). Negative control: Unimmunized goat IgG (10ug/ml) followed by Alexa Fluor 488 secondary antibody (2ug/ml).



EB11943 Immunofluorescence analysis of paraformaldehyde fixed U2OS cells, permeabilized with 0.15% Triton. Primary incubation 1hr (10ug/ml) followed by Alexa Fluor 488 secondary antibody (2ug/ml), showing cytoplasmic and Golgi/ER staining. The nuclear stain is DAPI (blue). Negative control: Unimmunized goat IgG (10ug/ml) followed by Alexa Fluor 488 secondary antibody (2ug/ml).



EB11943 Flow cytometric analysis of paraformaldehyde fixed HeLa cells (blue line), permeabilized with 0.5% Triton. Primary incubation 1hr (10ug/ml) followed by Alexa Fluor 488 secondary antibody (1ug/ml). IgG control: Unimmunized goat IgG (black line) followed by Alexa Fluor 488 secondary antibody.