



International Office

Everest Biotech Ltd

Vector Laboratories, Inc.
6737 Mowry Ave
Newark, CA 94560
United States

Customer Service:

customerservice@vectorlabs.com

Technical Service:

technical@vectorlabs.com

Tel: +1 (800) 227-6666

www.everestbiotech.com

**Research Use Only. Not for
diagnostic or therapeutic use.**

EB07898-B - Goat Anti-Insulysin / Insulinase, Biotinylated Antibody

Size: 100µg specific antibody in 200µl



Target Protein

Principal Names: IDE, insulin degrading enzyme, INSULYSIN, Abeta-degrading protease, insulin protease, insulinase

Official Symbol: IDE

Accession Number(s): NP_004960.2; NP_001159418.1; NP_001309722.1;
NP_001309723.1; NP_001309724.1; NP_001309726.1

Human GeneID(s): [3416](#)

Important Comments: This antibody is expected to recognize all reported isoforms (NP_004960.2; NP_001159418.1; NP_001309722.1; NP_001309723.1; NP_001309724.1; NP_001309726.1). Reported variants represent identical protein: NP_001309725.1, NP_001309724.1

Immunogen

Peptide with sequence CQQYNFDRDNTD., from the internal region of the protein sequence according to NP_004960.2; NP_001159418.1; NP_001309722.1; NP_001309723.1; NP_001309724.1; NP_001309726.1.

Please note the [peptide](#) is available for sale.

Purification and Storage

Purified from goat serum by ammonium sulphate precipitation followed by antigen affinity chromatography using the immunizing peptide.

Supplied at 0.5 mg/ml in Tris saline, 0.02% sodium azide, pH7.3 with 0.5% bovine serum albumin.

Aliquot and store at -20°C. Minimize freezing and thawing.

Applications Tested

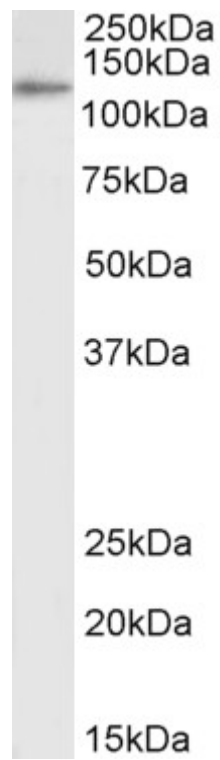
Peptide ELISA: antibody detection limit dilution 1:32000.

Western blot: Approx 120kDa band observed in lysates of cell line K562 (calculated MW of 118kDa according to NP_004960.2). See non-biotinylated parental product's datasheet for further QC data. Recommended concentration: 0.3-1µg/ml.

Species Reactivity

Tested: Human

Expected from sequence similarity: Human, Dog



Biotinylated EB07898 (0.3 μ g/ml) staining of K562 lysate (35 μ g protein in RIPA buffer), exactly mirroring its parental non-biotinylated product. Primary incubation was 1 hour. Detected by chemiluminescence, using streptavidin-HRP and using NAP blocker as a substitute for skimmed milk.