



International Office

Everest Biotech Ltd

Vector Laboratories, Inc.
6737 Mowry Ave
Newark, CA 94560
United States

Customer Service:

customerservice@vectorlabs.com

Technical Service:

technical@vectorlabs.com

Tel: +1 (800) 227-6666

www.everestbiotech.com

**Research Use Only. Not for
diagnostic or therapeutic use.**

EB10639 - Goat Anti-Integrin alpha 11 (mouse) Antibody

Size: 100µg specific antibody in 200µl



Target Protein

Principal Names: Itga11, integrin alpha 11, 4732459H24Rik, integrin a11, integrin alpha-11

Official Symbol: Itga11

Accession Number(s): NP_795896.4

Non-Human GeneID(s): 319480 (mouse), 315744 (rat)

Immunogen

Peptide with sequence C-PTEEDLSHAPQRNH, from the internal region (near C Terminus) of the protein sequence according to NP_795896.4.

Please note the [peptide](#) is available for sale.

Purification and Storage

Purified from goat serum by ammonium sulphate precipitation followed by antigen affinity chromatography using the immunizing peptide.

Supplied at 0.5 mg/ml in Tris saline, 0.02% sodium azide, pH7.3 with 0.5% bovine serum albumin.

Aliquot and store at -20°C. Minimize freezing and thawing.

Applications Tested

Peptide ELISA: antibody detection limit dilution 1:16000.

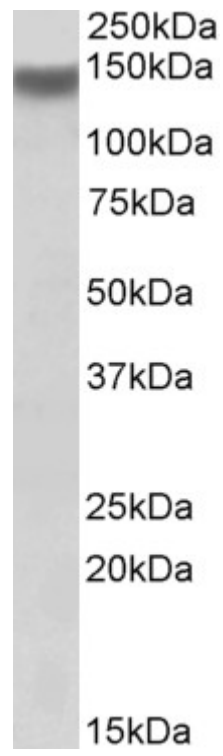
Western blot: Approx 140kDa band observed in Mouse Skeletal Muscle lysates (calculated MW of 133kDa according to NP_795896.4). Recommended concentration: 1-3µg/ml.

This antibody appears unfit in ICC.

Species Reactivity

Tested: Mouse

Expected from sequence similarity: Mouse, Rat



EB10639 (1 μ g/ml) staining of Mouse Skeletal Muscle lysate (35 μ g protein in RIPA buffer). Primary incubation was 1 hour. Detected by chemiluminescence.