



International Office

Everest Biotech Ltd

Vector Laboratories, Inc.
6737 Mowry Ave
Newark, CA 94560
United States

Customer Service:

customerservice@vectorlabs.com

Technical Service:

technical@vectorlabs.com

Tel: +1 (800) 227-6666

www.everestbiotech.com

**Research Use Only. Not for
diagnostic or therapeutic use.**

EB06651 - Goat Anti-Integrin beta 5 Antibody

Size: 100µg specific antibody in 200µl



Target Protein

Principal Names: ITGB5, integrin, beta 5, FLJ26658

Official Symbol: ITGB5

Accession Number(s): NP_002204.2

Human GeneID(s): [3693](#)

Non-Human GeneID(s): 16419 (mouse)

Immunogen

Peptide with sequence C-TFNKFNKSYNGTVD, from the C Terminus of the protein sequence according to NP_002204.2.

Please note the [peptide](#) is available for sale.

Purification and Storage

Purified from goat serum by ammonium sulphate precipitation followed by antigen affinity chromatography using the immunizing peptide.

Supplied at 0.5 mg/ml in Tris saline, 0.02% sodium azide, pH7.3 with 0.5% bovine serum albumin.

Aliquot and store at -20°C. Minimize freezing and thawing.

Applications Tested

Peptide ELISA: antibody detection limit dilution 1:16000.

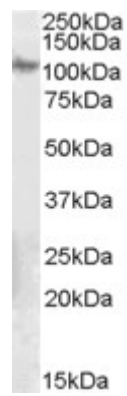
Western blot: Approx 110kDa band observed in Human Ovary and Mouse Eye lysates (calculated MW of 88.1kDa according to NP_002204.2). Recommended concentration: 0.1-0.3µg/ml.

Customer feedback: observed 110kDa in Mouse Eye was confirmed and not present in knock-out mouse.

Species Reactivity

Tested: Human, Mouse

Expected from sequence similarity: Human, Mouse, Rat, Dog, Pig, Cow



EB06651 (0.1µg/ml) staining of Human Ovary lysate (35µg protein in RIPA buffer). Primary incubation was 1 hour. Detected by chemiluminescence.