



International Office

Everest Biotech Ltd

Vector Laboratories, Inc.
6737 Mowry Ave
Newark, CA 94560
United States

Customer Service:

customerservice@vectorlabs.com

Technical Service:

technical@vectorlabs.com

Tel: +1 (800) 227-6666

www.everestbiotech.com

**Research Use Only. Not for
diagnostic or therapeutic use.**

EB09030 - Goat Anti-IP3KC Antibody

Size: 100µg specific antibody in 200µl



Target Protein

Principal Names: ITPKC, inositol 1,4,5-trisphosphate 3-kinase C, IP3KC

Official Symbol: ITPKC

Accession Number(s): NP_079470.1

Human GeneID(s): [80271](#)

Immunogen

Peptide with sequence C-ETERPKQKTEPDRSS, from the internal region of the protein sequence according to NP_079470.1.

Please note the [peptide](#) is available for sale.

Purification and Storage

Purified from goat serum by ammonium sulphate precipitation followed by antigen affinity chromatography using the immunizing peptide.

Supplied at 0.5 mg/ml in Tris saline, 0.02% sodium azide, pH7.3 with 0.5% bovine serum albumin.

Aliquot and store at -20°C. Minimize freezing and thawing.

Applications Tested

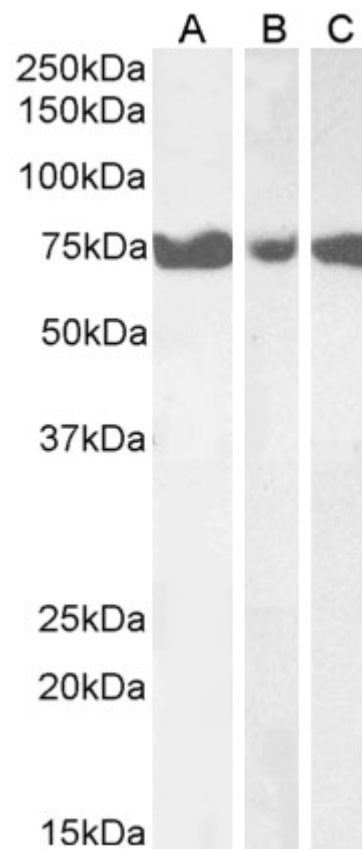
Peptide ELISA: antibody detection limit dilution 1:128000.

Western blot: Approx. 75kDa band observed in Human Pancreas, Heart and Skeletal Muscle lysates (calculated MW of 75.2kDa according to NP_079470.1). Recommended concentration: 1-3µg/ml.

Species Reactivity

Tested: Human

Expected from sequence similarity: Human



EB09030 (1 μ g/ml) staining of Human Pancreas (A), Heart (B) and Skeletal Muscle (C) lysates (35 μ g protein in RIPA buffer). Primary incubation was 1 hour. Detected by chemiluminescence.