

## UK Office

### Everest Biotech Ltd

Cherwell Innovation Centre  
77 Heyford Park  
Upper Heyford  
Oxfordshire  
OX25 5HD  
UK

Enquiries:

[info@everestbiotech.com](mailto:info@everestbiotech.com)

Sales:

[sales@everestbiotech.com](mailto:sales@everestbiotech.com)

Tech support:

[support@everestbiotech.com](mailto:support@everestbiotech.com)

Tel: +44 (0)1869 238326

[www.everestbiotech.com](http://www.everestbiotech.com)

**Research Use Only. Not for  
diagnostic or therapeutic use.**

## EB06619 - Goat Anti-IRAK4 (N Terminus) Antibody

Size: 100µg specific antibody in 200µl



### Target Protein

**Principal Names:** IRAK4, REN64, NY-REN-64, interleukin-1 receptor-associated kinase 4, IRAK-4 mutated form 1, interleukin-1 receptor associated kinase 4, interleukin-1 receptor associated kinase 4 mutant form 1, IPD1

**Official Symbol:** IRAK4

**Accession Number(s):** NP\_057207.2; NP\_001107654.1

**Human GeneID(s):** [51135](#)

**Non-Human GeneID(s):** 266632 (mouse)

### Immunogen

Peptide with sequence NKPITPSTYVRC, from the N Terminus of the protein sequence according to NP\_057207.2; NP\_001107654.1.

Please note the [peptide](#) is available for sale.

### Purification and Storage

Purified from goat serum by ammonium sulphate precipitation followed by antigen affinity chromatography using the immunizing peptide.

Supplied at 0.5 mg/ml in Tris saline, 0.02% sodium azide, pH7.3 with 0.5% bovine serum albumin.

Aliquot and store at -20°C. Minimize freezing and thawing.

### Applications Tested

**Peptide ELISA:** antibody detection limit dilution 1:32000.

**Western blot:** Approx 50kDa band observed in lysates of cell line HeLa and approx 55kDa in lysates of cell line Jurkat (calculated MW of 51.5kDa according to NP\_057207.1). This molecular weight is routinely observed by other sources.

Recommended concentration: 0.5-2µg/ml. Primary incubation 1 hour at room temperature.

**IHC:** Paraffin embedded Human Heart and Human Liver. Recommended concentration: 3.75µg/ml.

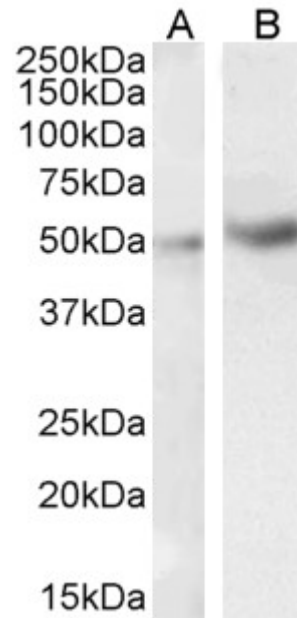
**Immunofluorescence:** Strong expression of the protein seen in the cytoplasm and microtubules of HeLa cells. Recommended concentration: 10µg/ml.

**Flow Cytometry:** Flow cytometric analysis of HeLa cells. Recommended concentration: 10ug/ml.

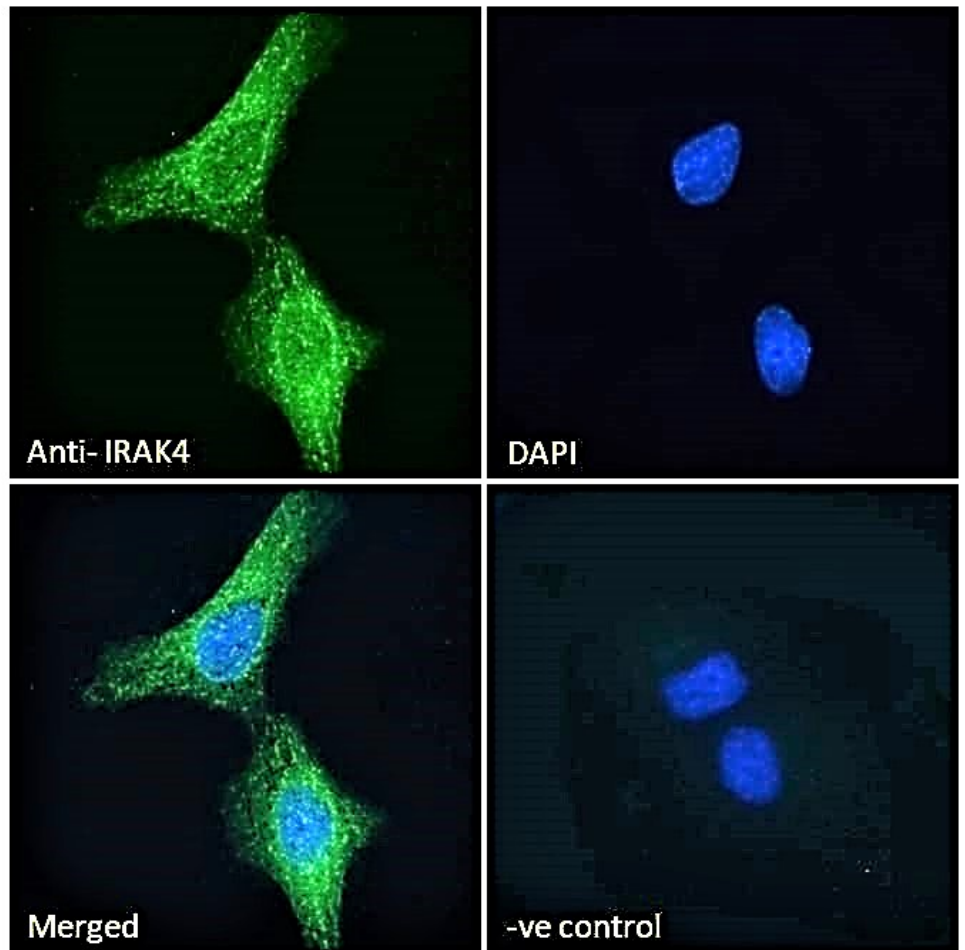
### Species Reactivity

**Tested:** Human

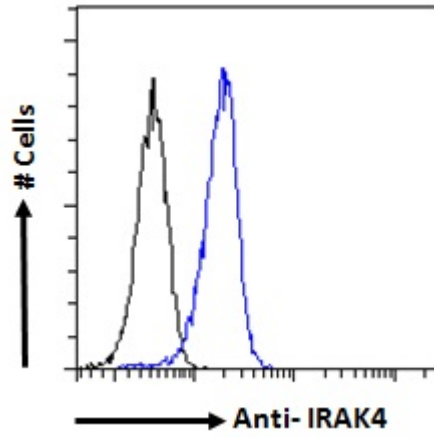
**Expected from sequence similarity:** Human, Mouse



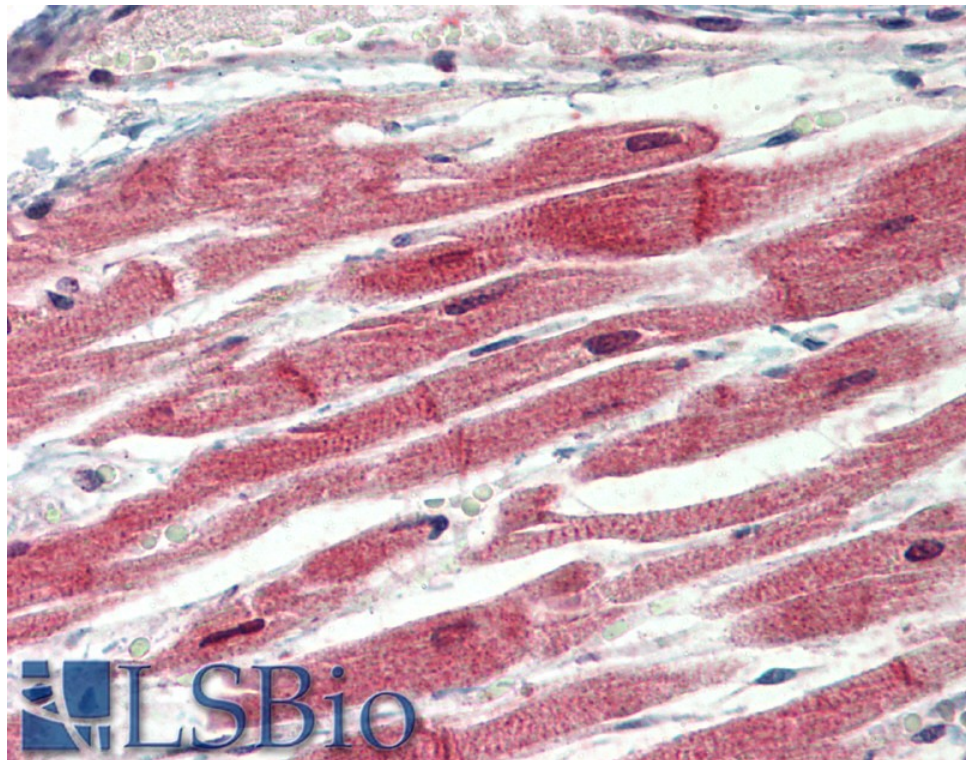
EB06619 (1µg/ml) staining of HeLa (A) and Jurkat (B) cell lysate (35µg protein in RIPA buffer). Detected by chemiluminescence.



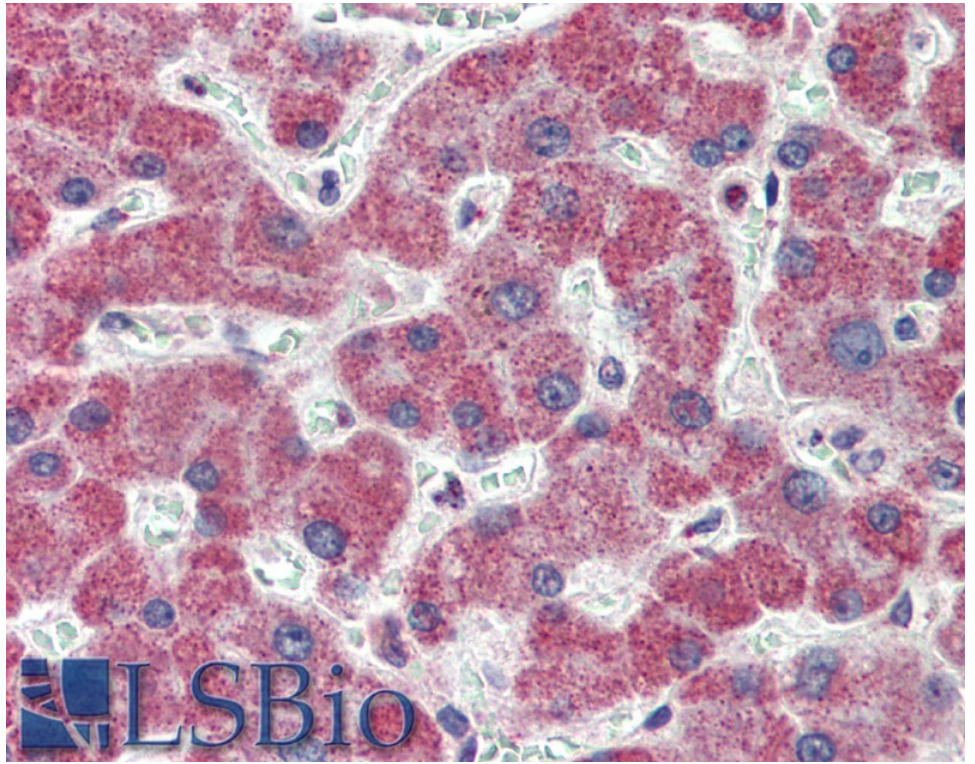
EB06619 Immunofluorescence analysis of paraformaldehyde fixed HeLa cells, permeabilized with 0.15% Triton. Primary incubation 1hr (10ug/ml) followed by Alexa Fluor 488 secondary antibody (2ug/ml), showing cytoplasmic and microtubule staining. The nuclear stain is DAPI (blue). Negative control: Unimmunized goat IgG (10ug/ml) followed by Alexa Fluor 488 secondary antibody (2ug/ml).



EB06619 Flow cytometric analysis of paraformaldehyde fixed HeLa cells (blue line), permeabilized with 0.5% Triton. Primary incubation 1hr (10ug/ml) followed by Alexa Fluor 488 secondary antibody (1ug/ml). IgG control: Unimmunized goat IgG (black line) followed by Alexa Fluor 488 secondary antibody.



EB06619 (3.75 $\mu$ g/ml) staining of paraffin embedded Human Heart. Steamed antigen retrieval with citrate buffer pH 6, AP-staining.



EB06619 (3.75µg/ml) staining of paraffin embedded Human Liver. Steamed antigen retrieval with citrate buffer pH 6, AP-staining.