

International Office

Everest Biotech Ltd

Vector Laboratories, Inc.
6737 Mowry Ave
Newark, CA 94560
United States

Customer Service:

customerservice@vectorlabs.com

Technical Service:

technical@vectorlabs.com

Tel: +1 (800) 227-6666

www.everestbiotech.com

**Research Use Only. Not for
diagnostic or therapeutic use.**

EB09488 - Goat Anti-IREB2 / IRP2 Antibody

Size: 100µg specific antibody in 200µl



Target Protein

Principal Names: IREB2, iron-responsive element binding protein 2, ACO3, FLJ23381, IRP2, IRP2AD, iron regulatory protein 2

Official Symbol: IREB2

Accession Number(s): NP_004127.1

Human GeneID(s): [3658](#)

Non-Human GeneID(s): 64602 (mouse), 64831 (rat)

Immunogen

Peptide with sequence C-SIHYEGSEYKLSHGS, from the internal region of the protein sequence according to NP_004127.1.

Please note the [peptide](#) is available for sale.

Purification and Storage

Purified from goat serum by ammonium sulphate precipitation followed by antigen affinity chromatography using the immunizing peptide.

Supplied at 0.5 mg/ml in Tris saline, 0.02% sodium azide, pH7.3 with 0.5% bovine serum albumin.

Aliquot and store at -20°C. Minimize freezing and thawing.

Applications Tested

Peptide ELISA: antibody detection limit dilution 1:32000.

Western blot: Approx 110kDa band observed in Human Liver lysates (calculated MW of 105kDa according to NP_004127.1). Recommended concentration: 1-3µg/ml. An additional band of unknown identity was also consistently observed at 60kDa. This band was confirmed as a breakdown product in aged purified recombinant protein by a free sample recipient.

IHC: In paraffin embedded Human Kidney shows preferential staining in the cytoplasm of DCT. Recommended concentration, 3-6µg/ml.

Species Reactivity

Tested: Human

Expected from sequence similarity: Human, Mouse, Rat

Specific Reference

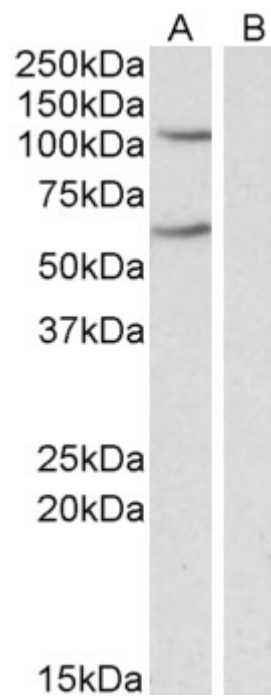
This antibody has been successfully used in Western blot on Human:

Emmanuel Pourcelot, Marine Le´non, Peggy Charbonnier, Fiona Louis, Pascal Mossuz and Jean-Marc Moulis

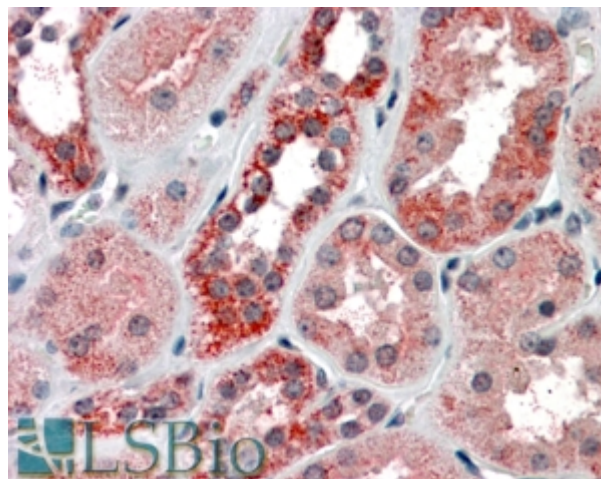
The iron regulatory proteins are defective in repressing translation via exogenous 5' iron responsive elements despite their relative abundance in leukemic cellular models

Metallomics, 2018, 10, 639

PMID: 29652073



EB09488 (0.3 μ g/ml) staining of Human Liver lysate (35 μ g protein in RIPA buffer). Primary incubation was 1 hour. Detected by chemiluminescence.



EB09488 (3.8 μ g/ml) staining of paraffin embedded Human Kidney. Steamed antigen retrieval with citrate buffer pH 6, AP-staining.