

UK Office

Everest Biotech Ltd
Cherwell Innovation Centre
77 Heyford Park
Upper Heyford
Oxfordshire
OX25 5HD
UK

Enquiries:

info@everestbiotech.com

Sales:

sales@everestbiotech.com

Tech support:

support@everestbiotech.com

Tel: +44 (0)1869 238326

www.everestbiotech.com

**Research Use Only. Not for
diagnostic or therapeutic use.**

EB05582 - Goat Anti-IRF2 Antibody

Size: 100µg specific antibody in 200µl



Target Protein

Principal Names: IRF2, interferon regulatory factor 2, DKFZp686F0244, IRF-2

Official Symbol: IRF2

Accession Number(s): NP_002190.2

Human GeneID(s): [3660](#)

Non-Human GeneID(s): 16363 (mouse)

Immunogen

Peptide with sequence KTSDITQARVKSC, from the C Terminus of the protein sequence according to NP_002190.2.

Please note the [peptide](#) is available for sale.

Purification and Storage

Purified from goat serum by ammonium sulphate precipitation followed by antigen affinity chromatography using the immunizing peptide.

Supplied at 0.5 mg/ml in Tris saline, 0.02% sodium azide, pH7.3 with 0.5% bovine serum albumin.

Aliquot and store at -20°C. Minimize freezing and thawing.

Applications Tested

Peptide ELISA: antibody detection limit dilution 1:2000.

Western blot: Approx 48kDa band observed in lysates of cell line Jurkat (calculated MW of 39.3kDa according to NP_002190.2). The observed molecular weight corresponds to earlier findings in literature with different antibodies (Li et al, Invest Ophthalmol Vis Sci. 1999 Apr;40(5):976-82.; PMID: 10102295. Recommended concentration: 1-3µg/ml.

Species Reactivity

Tested: Human

Expected from sequence similarity: Human, Mouse, Rat, Dog, Cow

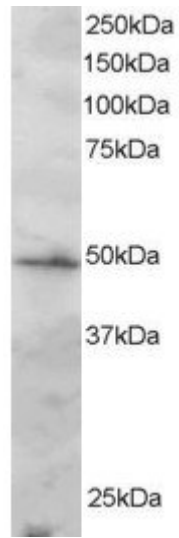
Specific Reference

This antibody has been successfully used in the following paper:

Liljeroos M, Vuolteenaho R, Rounioja S, Henriques-Normark B, Hallman M, Ojaniemi M. Bacterial ligand of TLR2 signals Stat activation via induction of IRF1/2 and interferon-alpha production.

Cell Signal. 2008 Oct;20(10):1873-81.

PMID: 18652890



EB05582 staining (2 μ g/ml) of Jurkat lysate (RIPA buffer, 30 μ g total protein per lane). Primary incubated for 1 hour. Detected by chemiluminescence.