



International Office

Everest Biotech Ltd

Vector Laboratories, Inc.
6737 Mowry Ave
Newark, CA 94560
United States

Customer Service:

customerservice@vectorlabs.com

Technical Service:

technical@vectorlabs.com

Tel: +1 (800) 227-6666

www.everestbiotech.com

**Research Use Only. Not for
diagnostic or therapeutic use.**

EB10698 - Goat Anti-IRF2BP1 (aa461-474) Antibody

Size: 100µg specific antibody in 200µl



Target Protein

Principal Names: IRF2BP1, interferon regulatory factor 2 binding protein 1, DKFZp434M154

Official Symbol: IRF2BP1

Accession Number(s): NP_056464.1

Human GeneID(s): [26145](#)

Immunogen

Peptide with sequence C-QPPTQHRLVARNGE, from the internal region of the protein sequence according to NP_056464.1.

Please note the [peptide](#) is available for sale.

Purification and Storage

Purified from goat serum by ammonium sulphate precipitation followed by antigen affinity chromatography using the immunizing peptide.

Supplied at 0.5 mg/ml in Tris saline, 0.02% sodium azide, pH7.3 with 0.5% bovine serum albumin.

Aliquot and store at -20°C. Minimize freezing and thawing.

Applications Tested

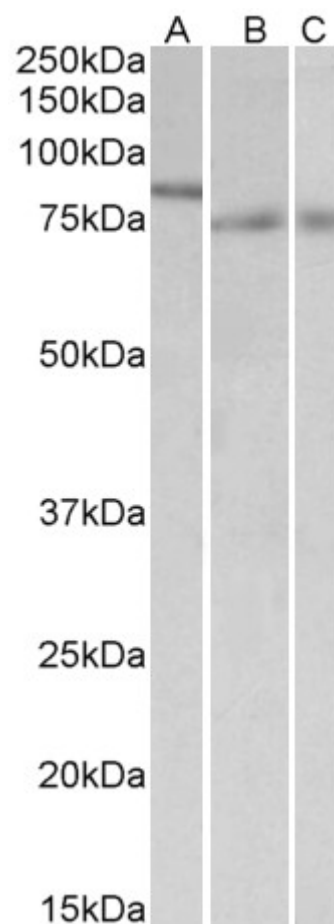
Peptide ELISA: antibody detection limit dilution 1:16000.

Western blot: Approx 60kDa band observed in Human Liver lysates (calculated MW of 61.7kDa according to NP_056464.1). An approx 85kDa band observed in nuclear lysates of cell line NIH3T3 and 75kDa in Mouse and Rat Colion lysates. This molecular weight is routinely observed by other sources. Recommended concentration: 0.3-1µg/ml.

Species Reactivity

Tested: Human, Mouse, Rat

Expected from sequence similarity: Human, Mouse, Rat, Dog, Pig, Cow



EB10698 (1 μ g/ml) staining of nuclear NIH3T3 lysate (A) and of Mouse (B) and Rat (C) Colon lysates (35 μ g protein in RIPA buffer). Primary incubation was 1 hour. Detected by chemiluminescence.



EB10698 (0.5 μ g/ml) staining of Human Liver lysate (35 μ g protein in RIPA buffer). Primary incubation was 1 hour. Detected by chemiluminescence.