



International Office

Everest Biotech Ltd

Vector Laboratories, Inc.
6737 Mowry Ave
Newark, CA 94560
United States

Customer Service:

customerservice@vectorlabs.com

Technical Service:

technical@vectorlabs.com

Tel: +1 (800) 227-6666

www.everestbiotech.com

**Research Use Only. Not for
diagnostic or therapeutic use.**

EB11331 - Goat Anti-IRF4 (aa393-407) Antibody

Size: 100µg specific antibody in 200µl



Target Protein

Principal Names: interferon regulatory factor 4, LSIRF, multiple myeloma oncogene 1, MUM1, IRF4

Official Symbol: IRF4

Accession Number(s): NP_002451.2; NP_001182215.1

Human GeneID(s): [3662](#)

Non-Human GeneID(s): 16364 (mouse), 291100 (rat)

Important Comments: This antibody is expected to recognize both reported isoforms (

Immunogen

Peptide with sequence C-DPQRQRKLITAHVEP, from the internal region (near C Terminus) of the protein sequence according to NP_002451.2; NP_001182215.1.

Please note the [peptide](#) is available for sale.

Purification and Storage

Purified from goat serum by ammonium sulphate precipitation followed by antigen affinity chromatography using the immunizing peptide.

Supplied at 0.5 mg/ml in Tris saline, 0.02% sodium azide, pH7.3 with 0.5% bovine serum albumin.

Aliquot and store at -20°C. Minimize freezing and thawing.

Applications Tested

Peptide ELISA: antibody detection limit dilution 1:16000.

Western blot: Approx 55kDa band observed in Human Spleen and approx 52kDa in Rat Spleen lysates (calculated MW of 51.8kDa according to Human NP_002451.2 and 51.6kDa according to Human NP_001182215.1 and Rat NP_001099578.1).

Recommended concentration: 0.1-0.3ug/ml. Primary incubation 1 hour at room temperature.

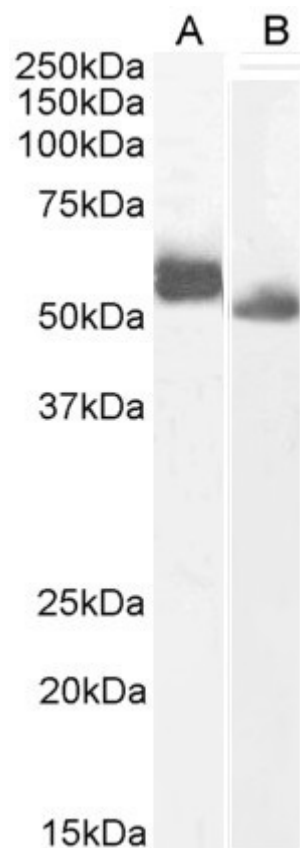
IHC: Paraffin embedded Human Spleen. Recommended concentration: 5µg/ml.

Flow Cytometry: Flow cytometric analysis of A431 cells. Recommended concentration: 10ug/ml.

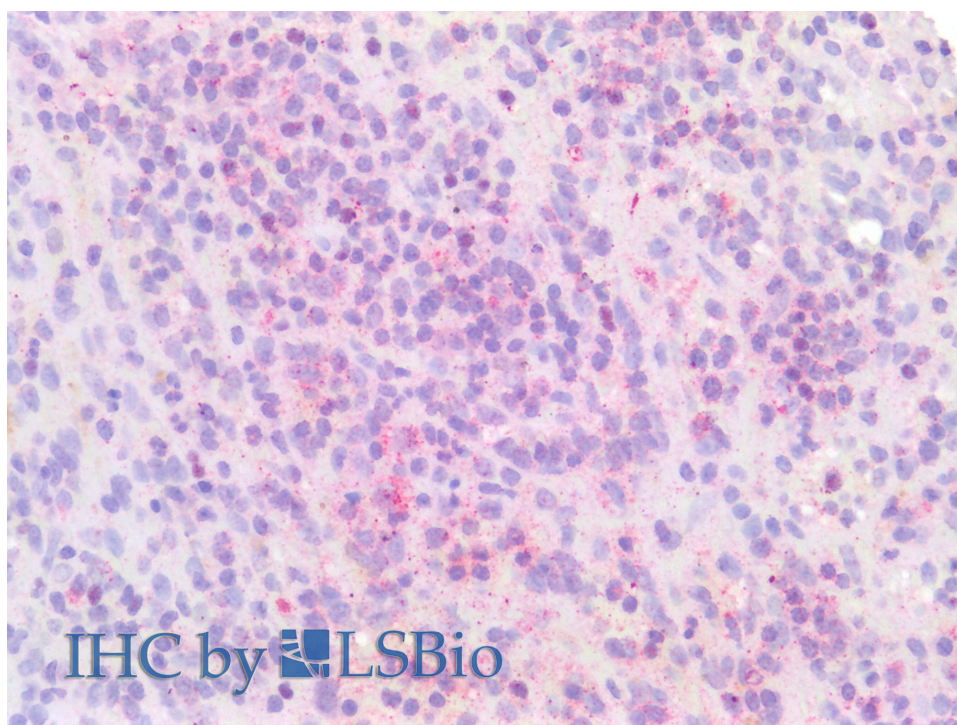
Species Reactivity

Tested: Human, Rat

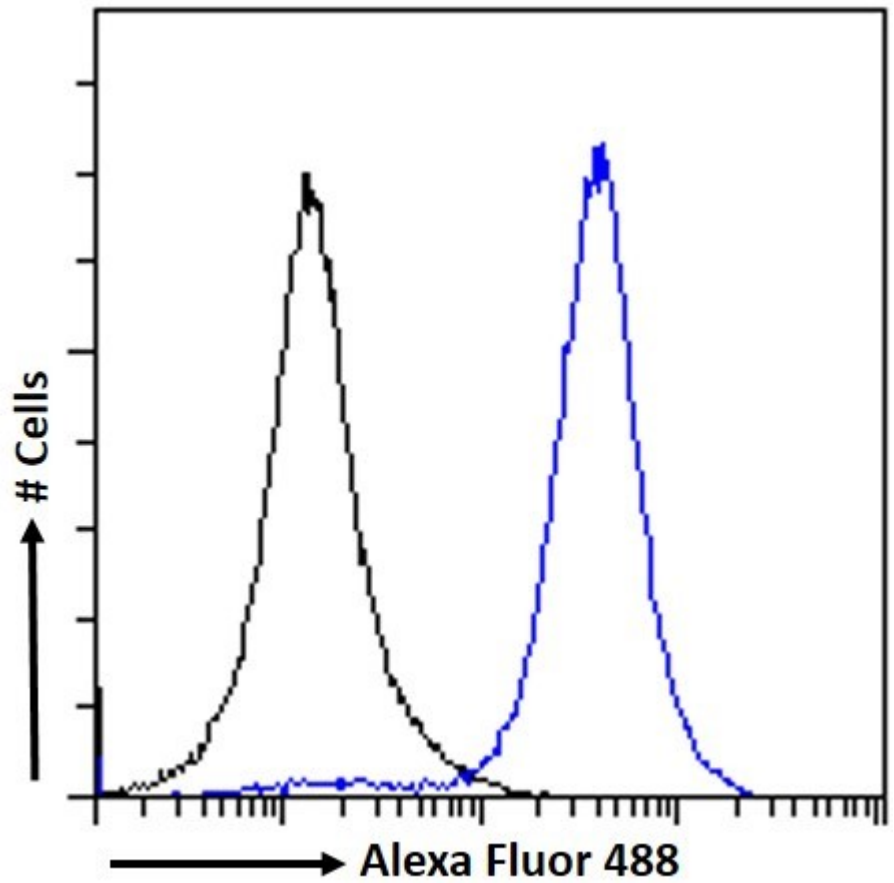
Expected from sequence similarity: Human, Mouse, Rat, Dog, Cow



EB11331 (0.3 μ g/ml) staining of Human (A) and (0.1 μ g/ml) Rat (B) Spleen lysate (35 μ g protein in RIPA buffer).



EB11331 (5 μ g/ml) staining of paraffin embedded Human Spleen. Steamed antigen retrieval with citrate buffer pH 6, AP-staining.



EB11331 Flow cytometric analysis of paraformaldehyde fixed A431 cells (blue line), permeabilized with 0.5% Triton. Primary incubation 1hr (10ug/ml) followed by Alexa Fluor 488 secondary antibody (1ug/ml). IgG control: Unimmunized goat IgG (black line) followed by Alexa Fluor 488 secondary antibody.