

UK Office

Everest Biotech Ltd

Cherwell Innovation Centre
77 Heyford Park
Upper Heyford
Oxfordshire
OX25 5HD
UK

Enquiries:

info@everestbiotech.com

Sales:

sales@everestbiotech.com

Tech support:

support@everestbiotech.com

Tel: +44 (0)1869 238326

www.everestbiotech.com

**Research Use Only. Not for
diagnostic or therapeutic use.**

EB05585-T - Goat Anti-IRF5 Antibody - Trial

Size: 20µg specific antibody in 40µl



Target Protein

Principal Names: IRF5, interferon regulatory factor 5, SLEB10

Official Symbol: IRF5

Accession Number(s): NP_116032.1; NP_001092097.2; NP_001092099.1; ; NP_001229381.1

Human GeneID(s): [3663](#)

Important Comments: This antibody is expected to recognize reported isoforms (NP_116032.1; NP_001092097.2 ; NP_001092099.1; ; NP_001229381.1

Immunogen

Peptide with sequence C-QGPWPMHPAGMQ, from the C Terminus of the protein sequence according to NP_116032.1; NP_001092097.2; NP_001092099.1; ; NP_001229381.1.

Please note the [peptide](#) is available for sale.

Purification and Storage

Purified from goat serum by ammonium sulphate precipitation followed by antigen affinity chromatography using the immunizing peptide.

Supplied at 0.5 mg/ml in Tris saline, 0.02% sodium azide, pH7.3 with 0.5% bovine serum albumin.

Aliquot and store at -20°C. Minimize freezing and thawing.

Applications Tested

Peptide ELISA: antibody detection limit dilution 1:128000.

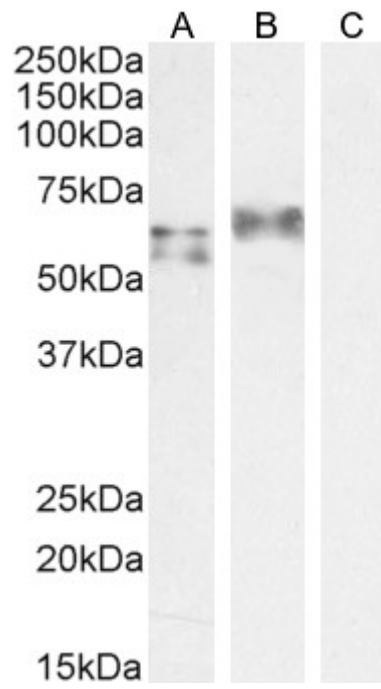
Western blot: Approx 55+60kDa bands observed in Human Spleen lysates and approx 65kDa in lysates of cell line A549, successfully blocked by incubation with the immunising peptide (calculated MW of 57.8kDa according to NP_001092099.1 and 56.0kDa according to NP_116032.1; NP_001092097.2). Recommended concentration: 0.3-1µg/ml. Primary incubation 1 hour at room temperature.

IHC: Paraffin embedded Human Spleen. Recommended concentration: 5µg/ml.

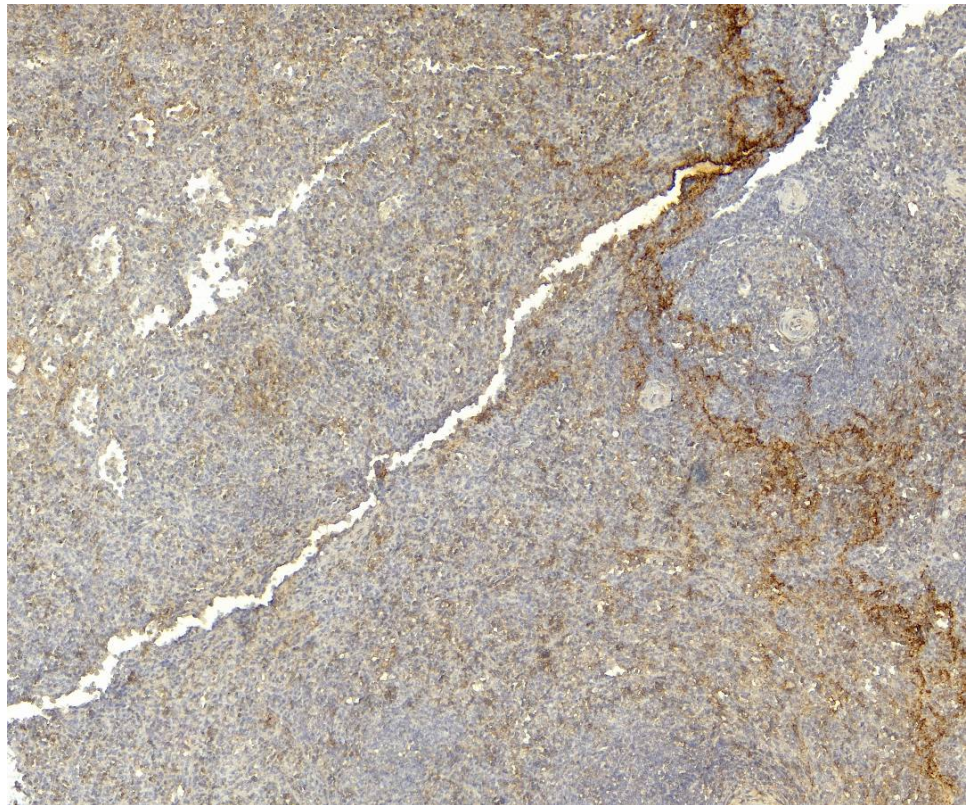
Species Reactivity

Tested: Human

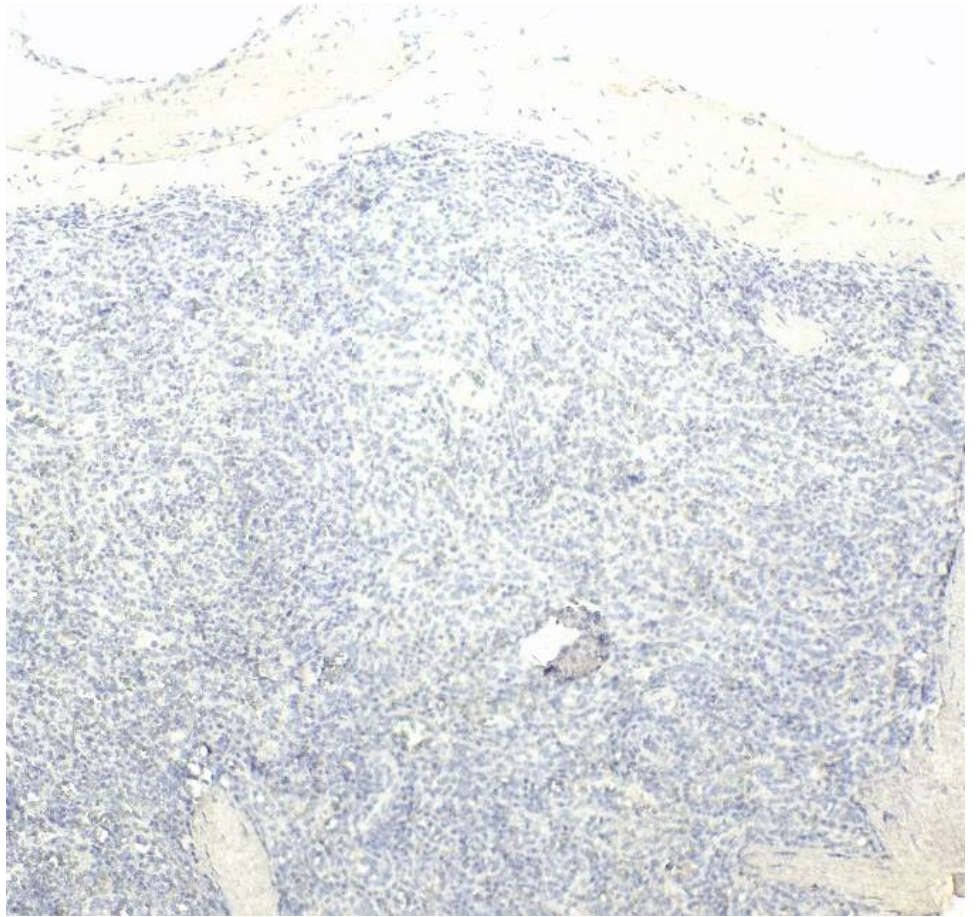
Expected from sequence similarity: Human



EB05585 staining (1 μ g/ml) Human Spleen (A) and A549 cell lysate (B) + peptide (C). (35 μ g protein in RIPA buffer). Detected by chemiluminescence



EB05585 (5 μ g/ml) staining of paraffin embedded Human Spleen. Heat induced antigen retrieval with citrate buffer pH 6, HRP-staining.



EB05585 Negative Control showing staining of paraffin embedded Human Spleen, with no primary antibody.