



UK Office

Everest Biotech Ltd

Cherwell Innovation Centre
77 Heyford Park
Upper Heyford
Oxfordshire
OX25 5HD
UK

Enquiries:

info@everestbiotech.com

Sales:

sales@everestbiotech.com

Tech support:

support@everestbiotech.com

Tel: +44 (0)1869 238326

Fax: +44 (0)1869 238327

US Office

Everest Biotech c/o Abcore

405 Maple Street, Suite A106
Ramona,
CA 92065
USA

Inquiries:

info@everestbiotech.com

Sales:

usasales@everestbiotech.com

Tech support:

support@everestbiotech.com

Tel: 888-320-4628 (toll-free)

Fax: 888-841-9041

www.everestbiotech.com

**Research Use Only. Not for
diagnostic or therapeutic use.**

EB05585-T - Goat Anti-IRF5 Antibody - Trial

Size: 20µg specific antibody in 40µl



Target Protein

Principal Names: IRF5, interferon regulatory factor 5, SLEB10

Official Symbol: IRF5

Accession Number(s): NP_116032.1; NP_001092097.2; NP_001092099.1

Human GeneID(s): [3663](#)

Important Comments: This antibody is expected to recognize reported isoforms (NP_116032.1; NP_001092097.2 ; NP_001092099.1

Immunogen

Peptide with sequence C-QGPWPMHPAGMQ, from the C Terminus of the protein sequence according to NP_116032.1; NP_001092097.2; NP_001092099.1.

Please note the [peptide](#) is available for sale.

Purification and Storage

Purified from goat serum by ammonium sulphate precipitation followed by antigen affinity chromatography using the immunizing peptide.

Supplied at 0.5 mg/ml in Tris saline, 0.02% sodium azide, pH7.3 with 0.5% bovine serum albumin.

Aliquot and store at -20°C. Minimize freezing and thawing.

Applications Tested

Peptide ELISA: antibody detection limit dilution 1:128000.

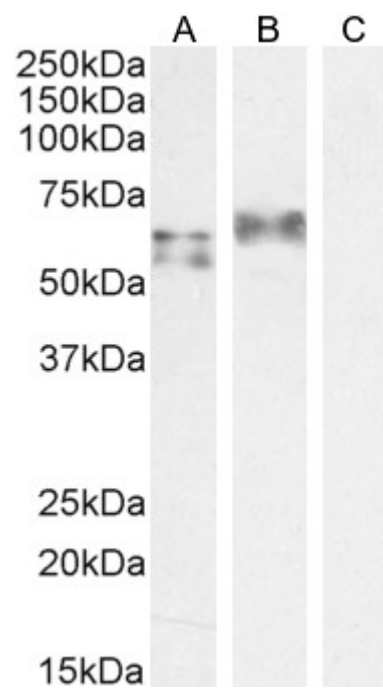
Western blot: Approx 55+60kDa bands observed in Human Spleen lysates and approx 65kDa in lysates of cell line A549 (calculated MW of 57.8kDa according to NP_001092099.1 and 56.0kDa according to NP_116032.1; NP_001092097.2).

Recommended concentration: 0.3-1µg/ml. Primary incubation 1 hour at room temperature.

Species Reactivity

Tested: Human

Expected from sequence similarity: Human, Mouse, Rat, Cow



EB05585 staining (1 µg/ml) Human Spleen (A) and A549 cell lysate (B) + peptide (C). (35 µg protein in RIPA buffer). Detected by chemiluminescence