

UK Office

Everest Biotech Ltd

Cherwell Innovation Centre
77 Heyford Park
Upper Heyford
Oxfordshire
OX25 5HD
UK

Enquiries:

info@everestbiotech.com

Sales:

sales@everestbiotech.com

Tech support:

support@everestbiotech.com

Tel: +44 (0)1869 238326

www.everestbiotech.com

**Research Use Only. Not for
diagnostic or therapeutic use.**

EB05585 - Goat Anti-IRF5 Antibody

Size: 100µg specific antibody in 200µl



Target Protein

Principal Names: IRF5, interferon regulatory factor 5, SLEB10

Official Symbol: IRF5

Accession Number(s): NP_116032.1; NP_001092097.2; NP_001092099.1; ;
NP_001229381.1

Human GeneID(s): [3663](#)

Important Comments: This antibody is expected to recognize reported isoforms
(NP_116032.1; NP_001092097.2 ; NP_001092099.1; ; NP_001229381.1

Immunogen

Peptide with sequence C-QGPWPMHPAGMQ, from the C Terminus of the protein
sequence according to NP_116032.1; NP_001092097.2; NP_001092099.1; ;
NP_001229381.1.

Please note the [peptide](#) is available for sale.

Purification and Storage

Purified from goat serum by ammonium sulphate precipitation followed by antigen affinity
chromatography using the immunizing peptide.

Supplied at 0.5 mg/ml in Tris saline, 0.02% sodium azide, pH7.3 with 0.5% bovine serum
albumin.

Aliquot and store at -20°C. Minimize freezing and thawing.

Applications Tested

Peptide ELISA: antibody detection limit dilution 1:128000.

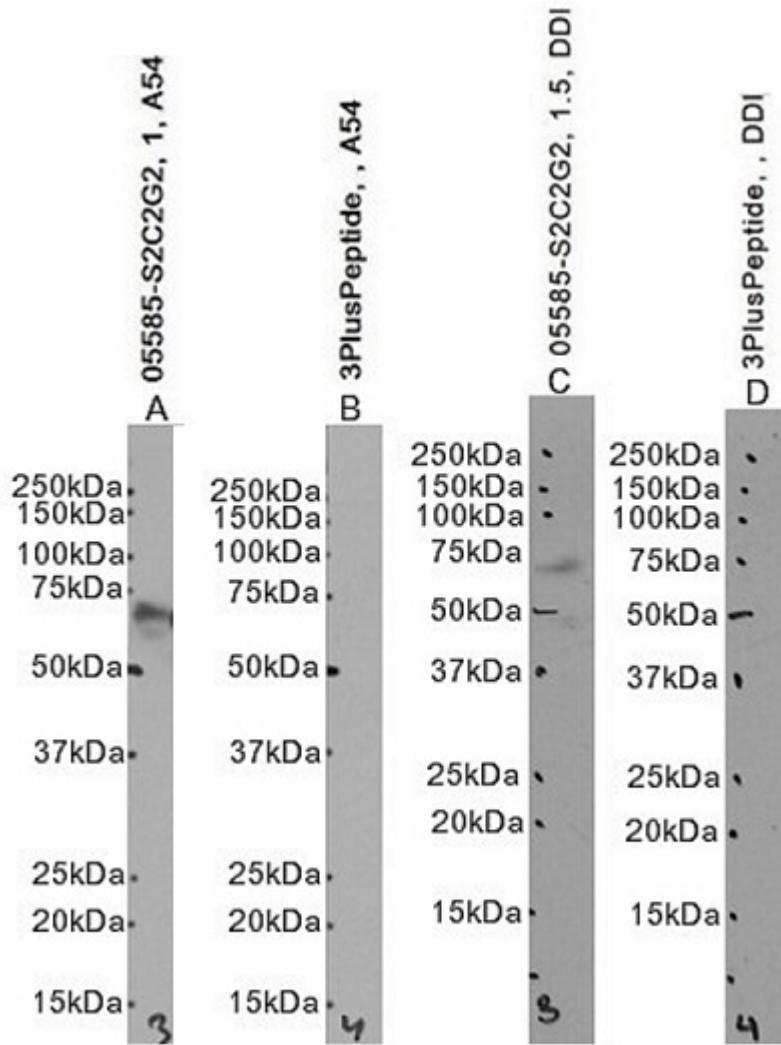
Western blot: Approx. 55+60kDa bands observed in Human Spleen lysates, approx.
65kDa in lysates of cell line A549, and approx. 70kDa in lysates of cell lines Daudi
(calculated MW of 57.8kDa according to NP_001092099.1). These molecular weights
have been observed by other commercial sources, and were successfully blocked by
incubation with the immunizing peptide. Recommended concentration: 1-2µg/ml. Primary
incubation 1 hour at room temperature.

IHC: Paraffin embedded Human Spleen. Recommended concentration: 5µg/ml.

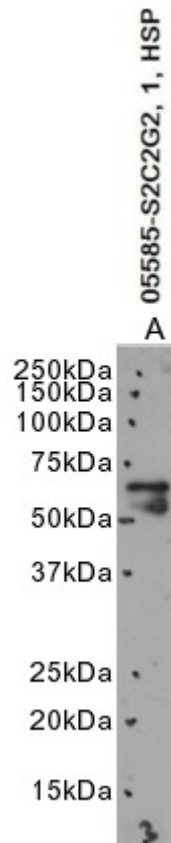
Species Reactivity

Tested: Human

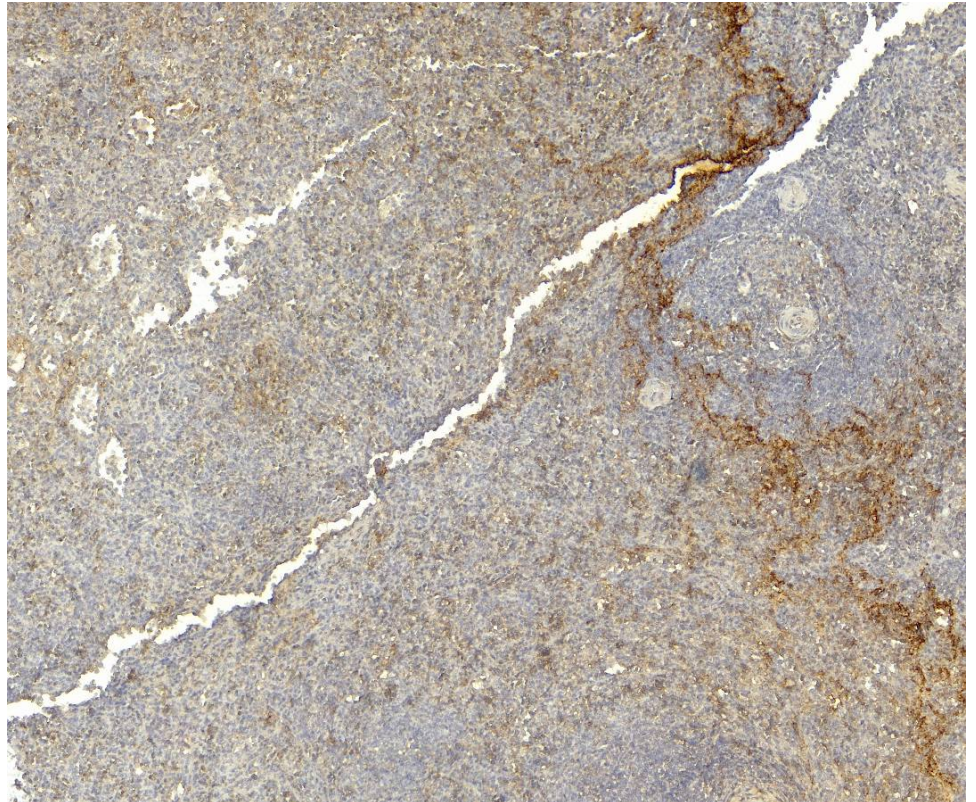
Expected from sequence similarity: Human



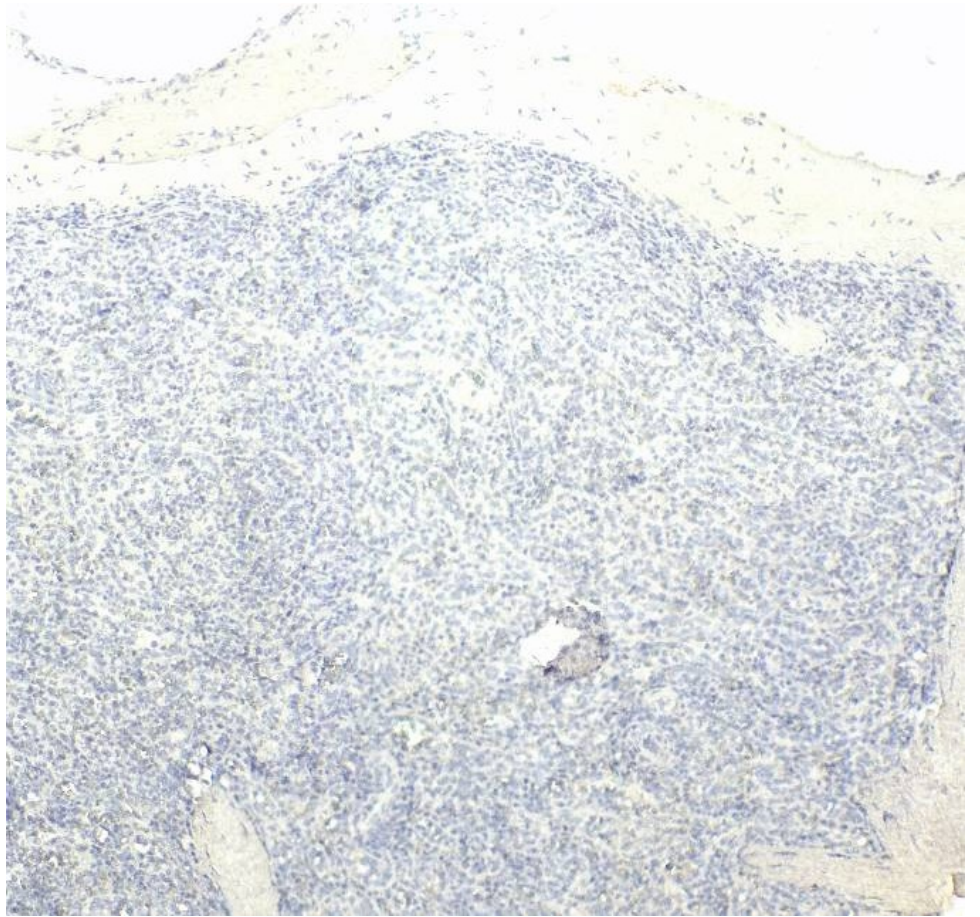
EB05585 optimised QC. Primary incubation 1 hour at room temperature.
 Images A+B: A549 cell lysate + peptide, incubation at primary Ab concentration 1ug/ml
 and C+D: Daudi cell lysate + peptide, incubation at primary Ab concentration 1ug/ml.
 (Loaded 35µg protein in RIPA buffer, per lane). Detected by chemiluminescence.



EB05585 optimised QC. Primary incubation 1 hour at room temperature.
Image A: Human Spleen lysate at primary Ab concentration 1ug/ml. (Loaded 35µg protein in RIPA buffer, per lane). Detected by chemiluminescence.



EB05585 (5µg/ml) staining of paraffin embedded Human Spleen. Heat induced antigen retrieval with citrate buffer pH 6, HRP-staining.



EB05585 Negative Control showing staining of paraffin embedded Human Spleen, with no primary antibody.