

UK Office

Everest Biotech Ltd

Cherwell Innovation Centre
77 Heyford Park
Upper Heyford
Oxfordshire
OX25 5HD
UK

Enquiries:

info@everestbiotech.com

Sales:

sales@everestbiotech.com

Tech support:

support@everestbiotech.com

Tel: +44 (0)1869 238326

www.everestbiotech.com

**Research Use Only. Not for
diagnostic or therapeutic use.**

EB05404 - Goat Anti-IRF6 Antibody

Size: 100µg specific antibody in 200µl



Target Protein

Principal Names: IRF6, interferon regulatory factor 6, LPS, PIT, PPS, VWS, OFC6

Official Symbol: IRF6

Accession Number(s): NP_006138.1

Human GeneID(s): [3664](#)

Non-Human GeneID(s): 54139 (mouse)

Immunogen

Peptide with sequence C-TPSMLPPLPPQ, from the C Terminus of the protein sequence according to NP_006138.1.

Please note the [peptide](#) is available for sale.

Purification and Storage

Purified from goat serum by ammonium sulphate precipitation followed by antigen affinity chromatography using the immunizing peptide.

Supplied at 0.5 mg/ml in Tris saline, 0.02% sodium azide, pH7.3 with 0.5% bovine serum albumin.

Aliquot and store at -20°C. Minimize freezing and thawing.

Applications Tested

Peptide ELISA: antibody detection limit dilution 1:4000.

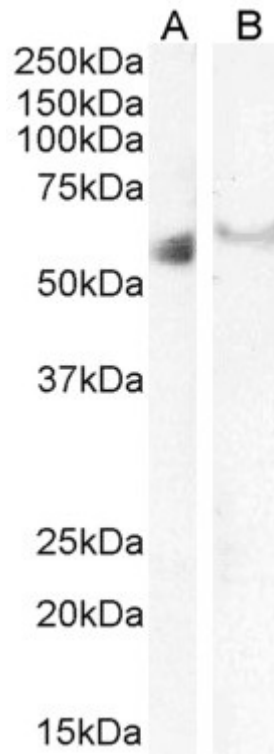
Western blot: Approx 58-60kDa band observed in Human Ovary and approx. 60kDa in Human Kidney lysates (calculated MW of 53.1kDa according to NP_006138.1). The observed molecular weight corresponds to different antibodies from other commercial sources. Recommended concentration: 2-3µg/ml. Primary incubation 1 hour at room temperature.

IHC: Paraffin embedded Human Kidney. Recommended concentration: 5µg/ml.

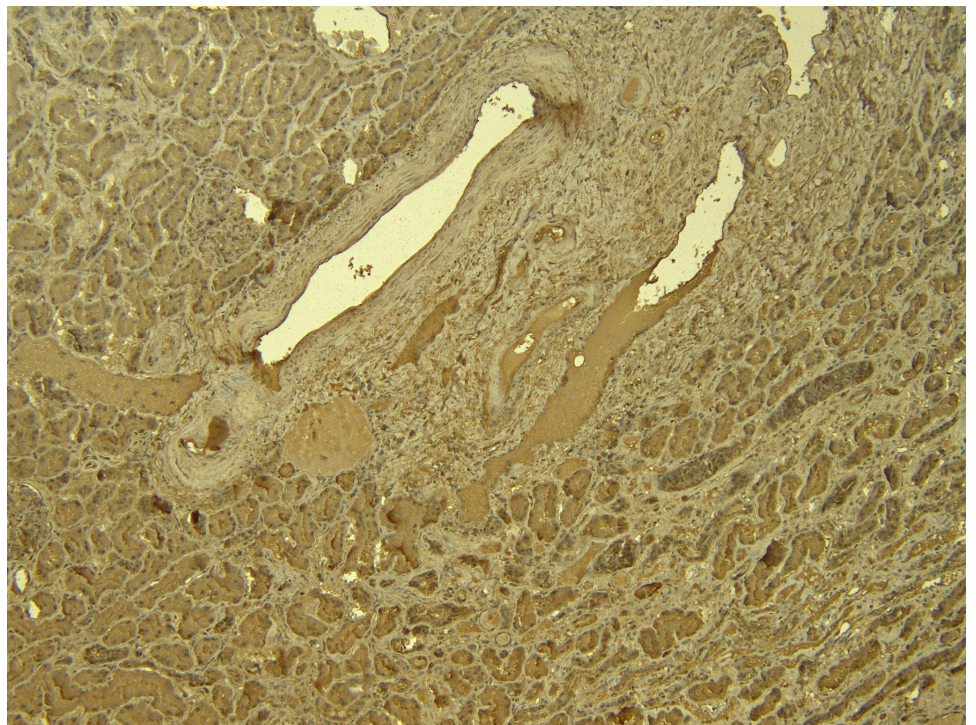
Species Reactivity

Tested: Human

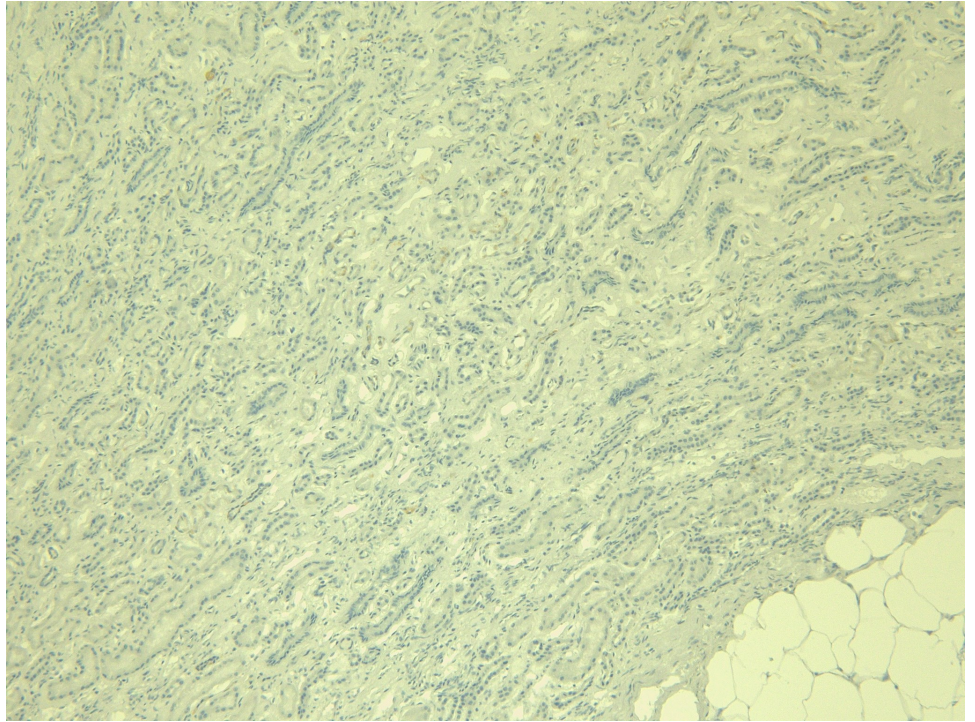
Expected from sequence similarity: Human



EB05404 staining (2 μ g/ml) of Human Ovary (A) and Kidney (B) lysate (RIPA buffer, 35 μ g total protein per lane). Detected by chemiluminescence.



EB05404 (5 μ g/ml) staining of paraffin embedded Human Kidney. Heat induced antigen retrieval with citrate buffer pH 6, HRP-staining.



EB05404 Negative Control showing staining of paraffin embedded Human Kidney, with no primary antibody.