



## UK Office

### Everest Biotech Ltd

Cherwell Innovation Centre  
77 Heyford Park  
Upper Heyford  
Oxfordshire  
OX25 5HD  
UK

Enquiries:

[info@everestbiotech.com](mailto:info@everestbiotech.com)

Sales:

[sales@everestbiotech.com](mailto:sales@everestbiotech.com)

Tech support:

[support@everestbiotech.com](mailto:support@everestbiotech.com)

Tel: +44 (0)1869 238326

Fax: +44 (0)1869 238327

## US Office

### Everest Biotech c/o Abcore

405 Maple Street, Suite A106  
Ramona,  
CA 92065  
USA

Inquiries:

[info@everestbiotech.com](mailto:info@everestbiotech.com)

Sales:

[usasales@everestbiotech.com](mailto:usasales@everestbiotech.com)

Tech support:

[support@everestbiotech.com](mailto:support@everestbiotech.com)

Tel: 888-320-4628 (toll-free)

Fax: 888-841-9041

[www.everestbiotech.com](http://www.everestbiotech.com)

**Research Use Only. Not for  
diagnostic or therapeutic use.**

## EB05404 - Goat Anti-IRF6 Antibody

Size: 100µg specific antibody in 200µl



## Target Protein

**Principal Names:** IRF6, interferon regulatory factor 6, LPS, PIT, PPS, VWS, OFC6

**Official Symbol:** IRF6

**Accession Number(s):** NP\_006138.1

**Human GeneID(s):** [3664](#)

**Non-Human GeneID(s):** 54139 (mouse)

## Immunogen

Peptide with sequence C-TPSMLPPLPPQ, from the C Terminus of the protein sequence according to NP\_006138.1.

Please note the [peptide](#) is available for sale.

## Purification and Storage

Purified from goat serum by ammonium sulphate precipitation followed by antigen affinity chromatography using the immunizing peptide.

Supplied at 0.5 mg/ml in Tris saline, 0.02% sodium azide, pH7.3 with 0.5% bovine serum albumin.

Aliquot and store at -20°C. Minimize freezing and thawing.

## Applications Tested

**Peptide ELISA:** antibody detection limit dilution 1:4000.

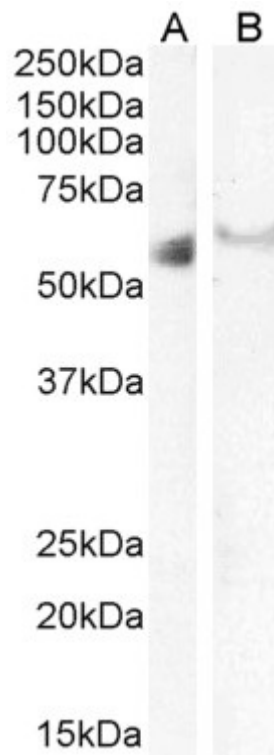
**Western blot:** Approx 58-60kDa band observed in Human Ovary and approx. 60kDa in Human Kidney lysates (calculated MW of 53.1kDa according to NP\_006138.1). The observed molecular weight corresponds to different antibodies from other commercial sources. Recommended concentration: 2-3µg/ml. Primary incubation 1 hour at room temperature.

**IHC:** Paraffin embedded Human Kidney. Recommended concentration: 5µg/ml.

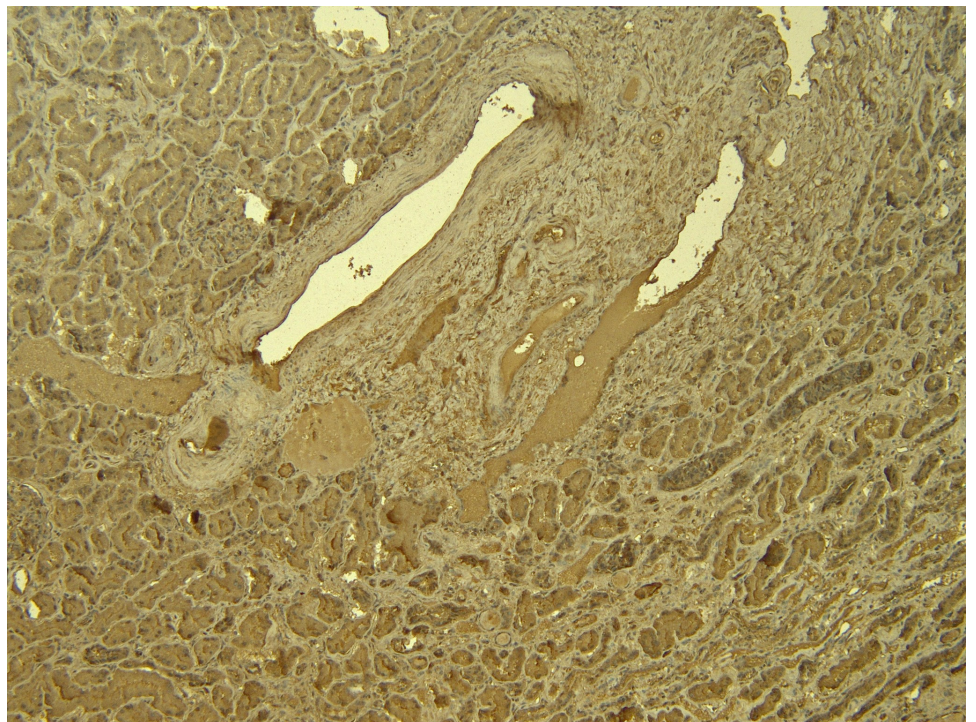
## Species Reactivity

**Tested:** Human

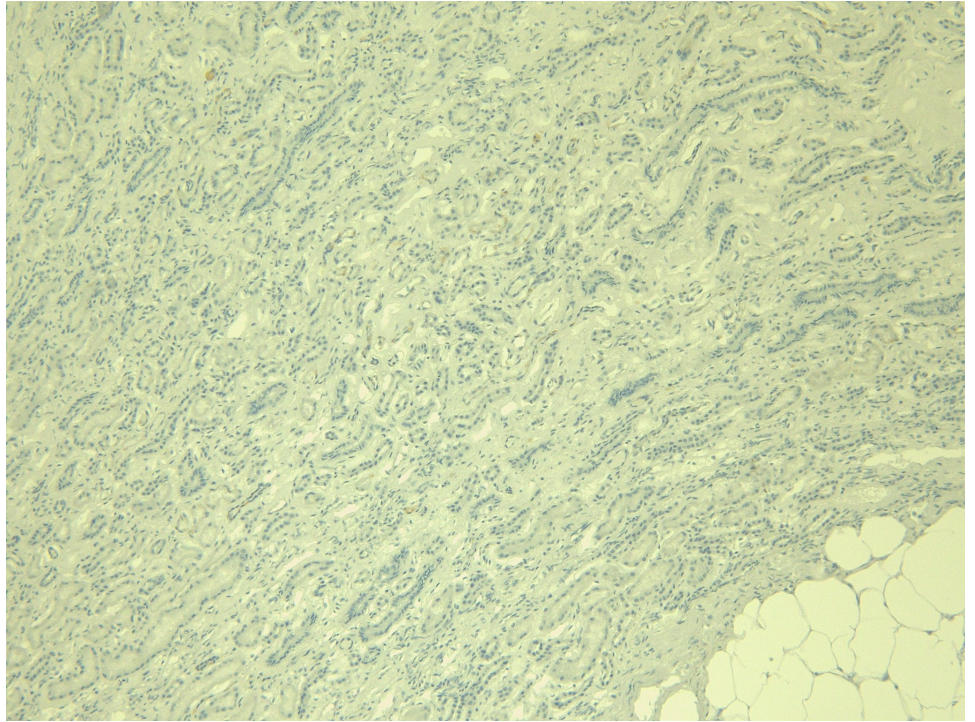
**Expected from sequence similarity:** Human



EB05404 staining (2 $\mu$ g/ml) of Human Ovary (A) and Kidney (B) lysate (RIPA buffer, 35 $\mu$ g total protein per lane).  
Detected by chemiluminescence.



EB05404 (5 $\mu$ g/ml) staining of paraffin embedded Human Kidney. Heat induced antigen retrieval with citrate buffer pH 6, HRP-staining.



EB05404 Negative Control showing staining of paraffin embedded Human Kidney, with no primary antibody.