

## UK Office

### Everest Biotech Ltd

Cherwell Innovation Centre  
77 Heyford Park  
Upper Heyford  
Oxfordshire  
OX25 5HD  
UK

Enquiries:

[info@everestbiotech.com](mailto:info@everestbiotech.com)

Sales:

[sales@everestbiotech.com](mailto:sales@everestbiotech.com)

Tech support:

[support@everestbiotech.com](mailto:support@everestbiotech.com)

Tel: +44 (0)1869 238326

[www.everestbiotech.com](http://www.everestbiotech.com)

**Research Use Only. Not for  
diagnostic or therapeutic use.**

## EB07825-T - Goat Anti-ITGAM / CD11B Antibody - Trial

Size: 20µg specific antibody in 40µl



### Target Protein

**Principal Names:** ITGAM, integrin, alpha M (complement component 3 receptor 3 subunit), CD11B, CR3A, MAC-1, MAC1A, MGC117044, MO1A, Integrin, alpha-M (complement component receptor-3, alpha), antigen CD11B (p170), macrophage antigen, alpha polypeptide, antigen CD11b (p170), complement component receptor 3, alpha, integrin alpha M, integrin, alpha M (complement component receptor 3, alpha), CD11b (p170), macrophage antigen alpha polypeptide, macrophage antigen alpha polypeptide, neutrophil adherence receptor alpha-M subunit

**Official Symbol:** ITGAM

**Accession Number(s):** NP\_000623.2

**Human GeneID(s):** [3684](#)

**Non-Human GeneID(s):** 16409 (mouse), 25021 (rat)

**Important Comments:** The immunizing peptide represents part of the extra-cellular domain.

### Immunogen

Peptide with sequence C-RNDGEDSYRTQ, from the internal region of the protein sequence according to NP\_000623.2 .

Please note the [peptide](#) is available for sale.

### Purification and Storage

Purified from goat serum by ammonium sulphate precipitation followed by antigen affinity chromatography using the immunizing peptide.

Supplied at 0.5 mg/ml in Tris saline, 0.02% sodium azide, pH7.3 with 0.5% bovine serum albumin.

Aliquot and store at -20°C. Minimize freezing and thawing.

### Applications Tested

**Peptide ELISA:** antibody detection limit dilution 1:16000.

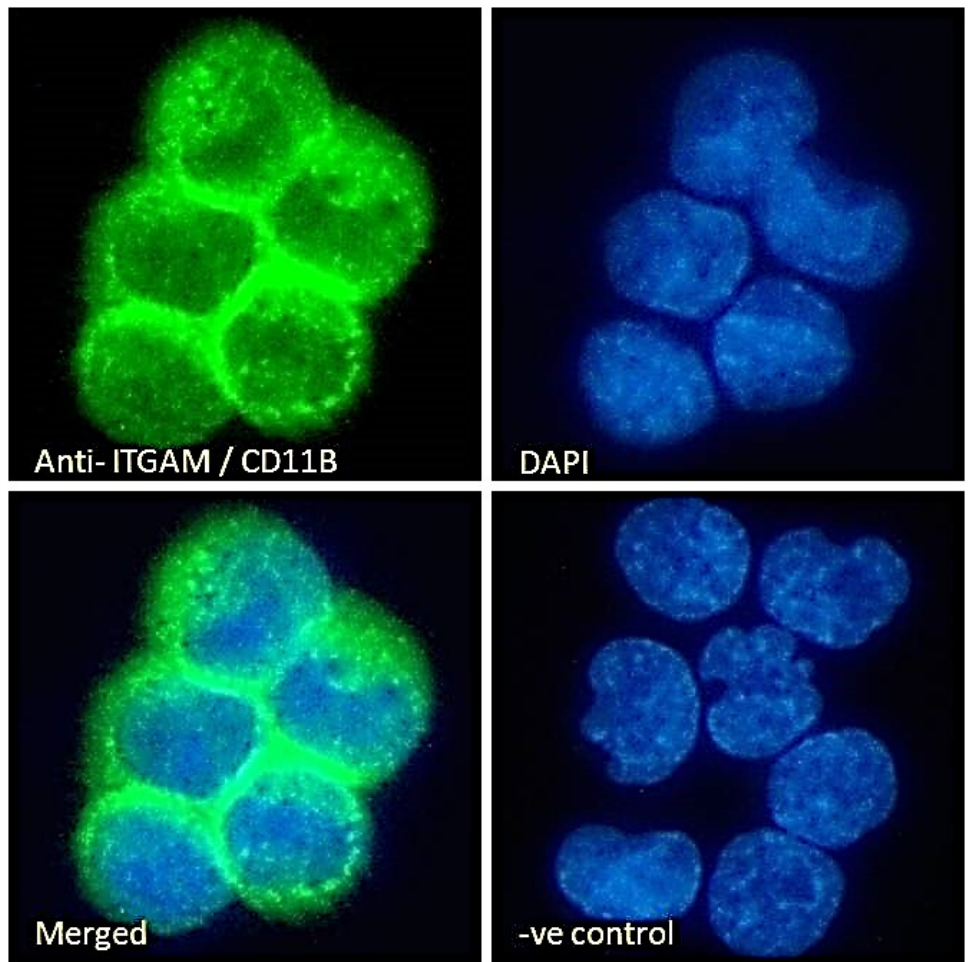
**IHC:** Paraffin embedded Human Tonsil. Recommended concentration: 6-8µg/ml.

**Immunofluorescence:** Strong expression of the protein seen in the plasma membrane and cytoplasm of U937 and THP-1 cells. Recommended concentration: 10µg/ml.

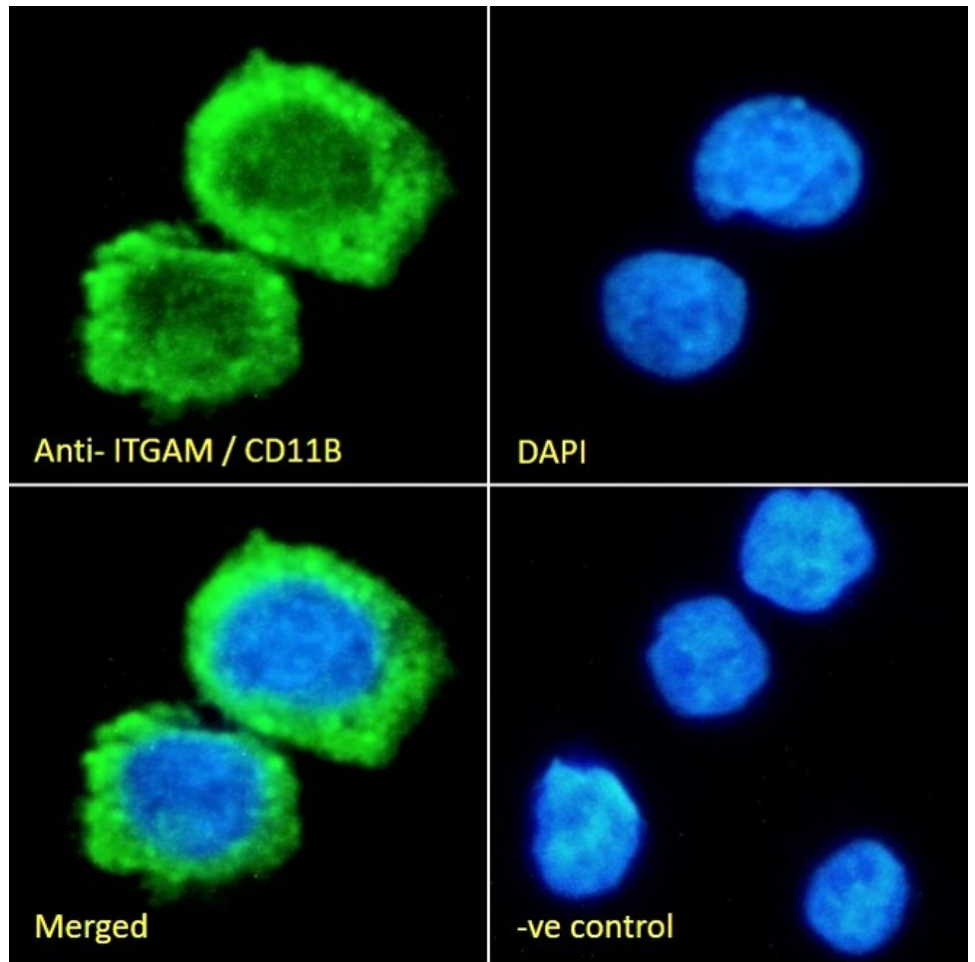
### Species Reactivity

**Tested:** Human

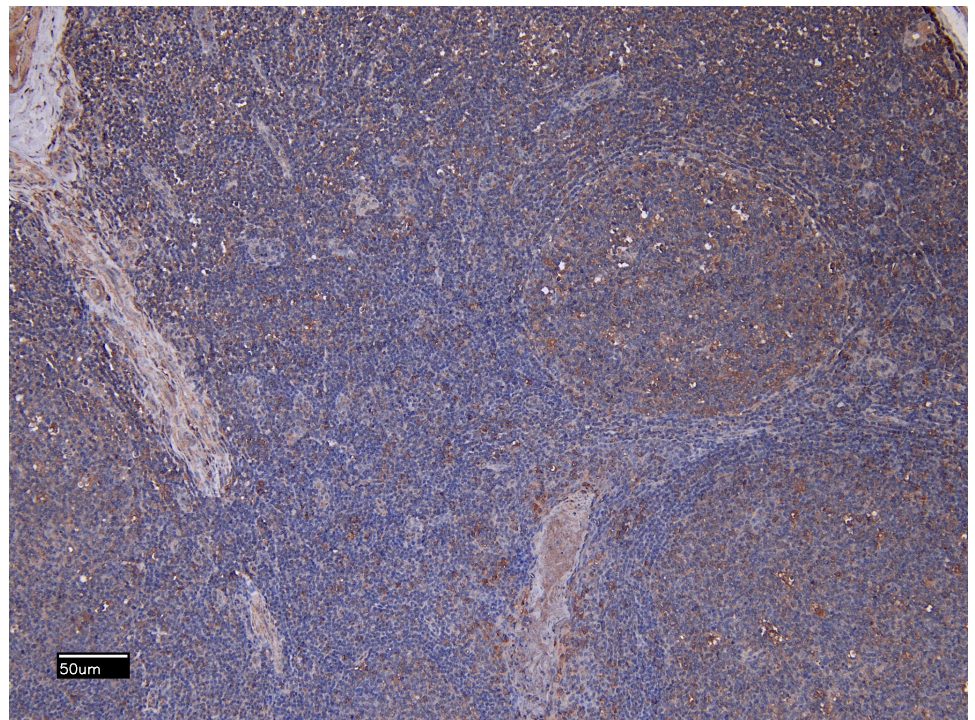
**Expected from sequence similarity:** Human



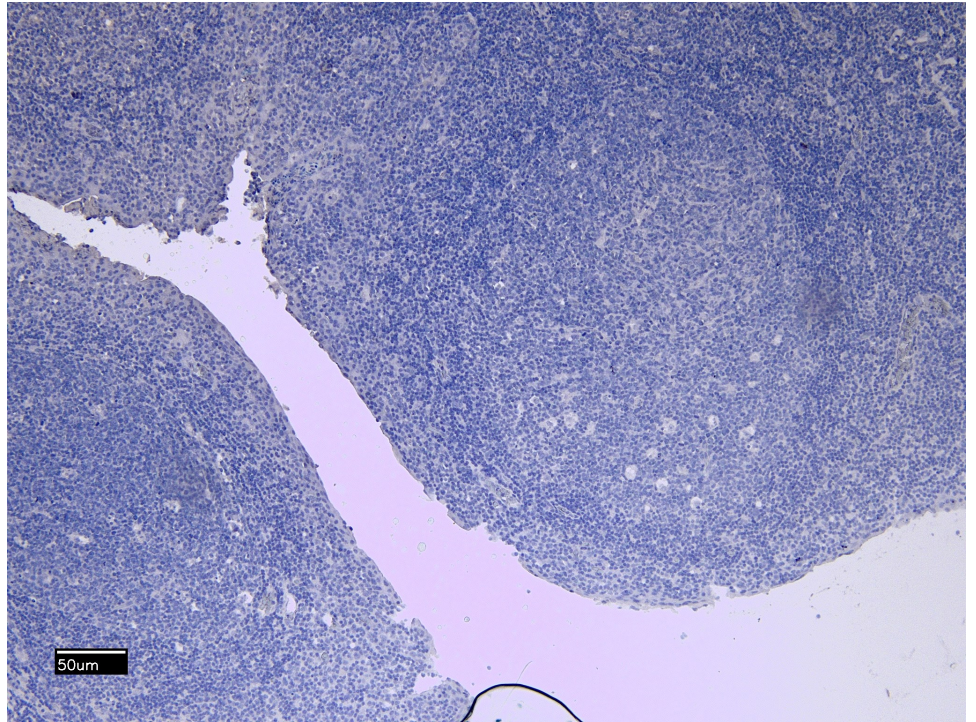
EB07825 Immunofluorescence analysis of paraformaldehyde fixed U937 cells immobilized on Shifix™ coverslip, permeabilized with 0.15% Triton. Primary incubation 1hr (10ug/ml) followed by Alexa Fluor 488 secondary antibody (2ug/ml), showing membrane and cytoplasmic staining. The nuclear stain is DAPI (blue). Negative control: Unimmunized goat IgG (10ug/ml) followed by Alexa Fluor 488 secondary antibody (2ug/ml).



EB07825 Immunofluorescence analysis of paraformaldehyde fixed THP-1 cells immobilized on Shifix™ coverslip, permeabilized with 0.15% Triton. Primary incubation 1hr (10ug/ml) followed by Alexa Fluor 488 secondary antibody (2ug/ml), showing membrane and cytoplasmic staining. The nuclear stain is DAPI (blue). Negative control: Unimmunized goat IgG (10ug/ml) followed by Alexa Fluor 488 secondary antibody (2ug/ml).



EB07825 (8µg/ml) staining of paraffin embedded Human Tonsil. Heat induced antigen retrieval with citrate buffer pH 6, HRP-staining.



EB07825 Negative Control showing staining of paraffin embedded Human Tonsil, with no primary antibody.