

UK Office

Everest Biotech Ltd

Cherwell Innovation Centre
77 Heyford Park
Upper Heyford
Oxfordshire
OX25 5HD
UK

Enquiries:

info@everestbiotech.com

Sales:

sales@everestbiotech.com

Tech support:

support@everestbiotech.com

Tel: +44 (0)1869 238326

www.everestbiotech.com

**Research Use Only. Not for
diagnostic or therapeutic use.**

EB10921 - Goat Anti-ITIH4 (aa890-903) Antibody

Size: 100µg specific antibody in 200µl



Target Protein

Principal Names: ITIH4, inter-alpha (globulin) inhibitor H4 (plasma Kallikrein-sensitive glycoprotein), DKFZp686G21125, H4P, IHRP, ITIHL1, PK120, ITI heavy chain H4, ITI-HC4, OTTHUMP00000213834, OTTHUMP00000213869, PK-120, gp120, inter-alpha-inhibitor

Official Symbol: ITIH4

Accession Number(s): NP_002209.2; NP_001159921.1

Human GeneID(s): [3700](#)

Important Comments: This antibody is expected to recognize both reported isoforms (NP_002209.2; NP_001159921.1).

Immunogen

Peptide with sequence C-SDDGRRTLRLVQGND, from the C Terminus of the protein sequence according to NP_002209.2; NP_001159921.1.

Please note the [peptide](#) is available for sale.

Purification and Storage

Purified from goat serum by ammonium sulphate precipitation followed by antigen affinity chromatography using the immunizing peptide.

Supplied at 0.5 mg/ml in Tris saline, 0.02% sodium azide, pH7.3 with 0.5% bovine serum albumin.

Aliquot and store at -20°C. Minimize freezing and thawing.

Applications Tested

Peptide ELISA: antibody detection limit dilution 1:16000.

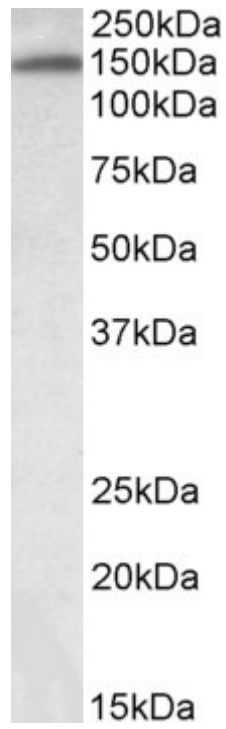
Western blot: Approx 150kDa band observed in Human Placenta lysates (calculated MW of 103kDa according to NP_002209.2). The observed molecular weight corresponds to the glycosylated form. Recommended concentration: 0.03-0.1µg/ml. Primary incubation was 1 hour.

IHC: Paraffin embedded Human Testis (Leydig cells). Recommended concentration: 5µg/ml.

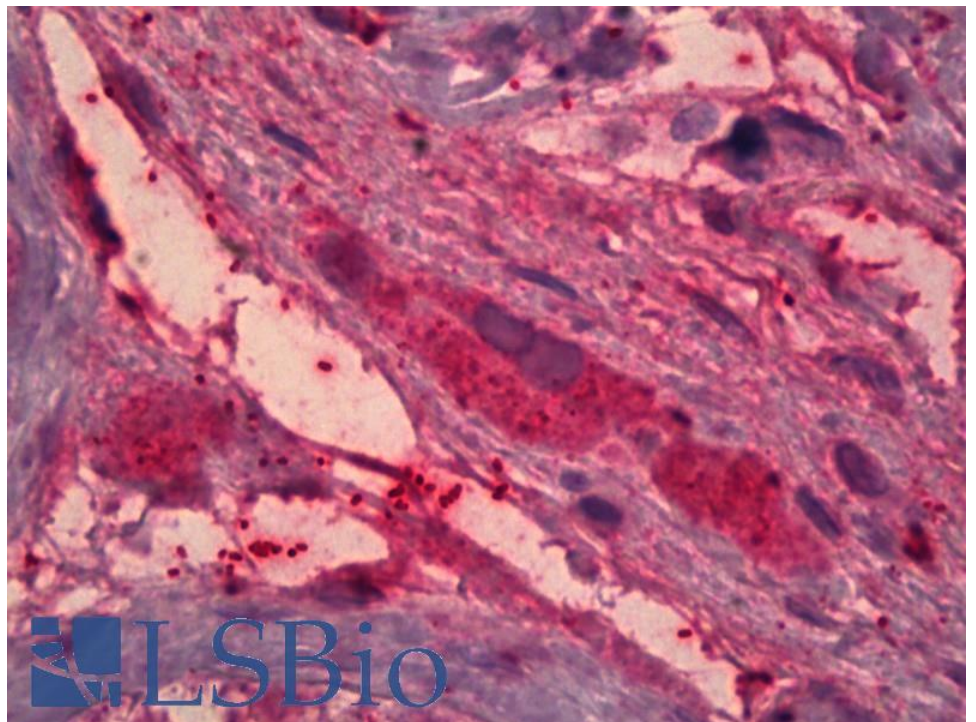
Species Reactivity

Tested: Human

Expected from sequence similarity: Human



EB10921 (0.03 μ g/ml) staining of Human Placenta lysate (35 μ g protein in RIPA buffer). Detected by chemiluminescence.



EB10921 (5 μ g/ml) staining of paraffin embedded Human Testis. Steamed antigen retrieval with citrate buffer pH 6, AP-staining.