



UK Office

Everest Biotech Ltd

Cherwell Innovation Centre
77 Heyford Park
Upper Heyford
Oxfordshire
OX25 5HD
UK

Enquiries:

info@everestbiotech.com

Sales:

sales@everestbiotech.com

Tech support:

support@everestbiotech.com

Tel: +44 (0)1869 238326

www.everestbiotech.com

**Research Use Only. Not for
diagnostic or therapeutic use.**

EB09138 - Goat Anti-ITM2B Antibody

Size: 100µg specific antibody in 200µl



Target Protein

Principal Names: ITM2B, integral membrane protein 2B, ABRI, BRI, BRI2, BRICD2B, E25B, E3-16, FBD, BRICHOS domain containing 2B, OTTHUMP00000018394

Official Symbol: ITM2B

Accession Number(s): NP_068839.1

Human GeneID(s): [9445](#)

Non-Human GeneID(s): 16432 (mouse), 290364 (rat)

Immunogen

Peptide with sequence C-HDKETYKLQRRETIK, from the internal region of the protein sequence according to NP_068839.1.

Please note the [peptide](#) is available for sale.

Purification and Storage

Purified from goat serum by ammonium sulphate precipitation followed by antigen affinity chromatography using the immunizing peptide.

Supplied at 0.5 mg/ml in Tris saline, 0.02% sodium azide, pH7.3 with 0.5% bovine serum albumin.

Aliquot and store at -20°C. Minimize freezing and thawing.

Applications Tested

Peptide ELISA: antibody detection limit dilution 1:8000.

Western blot: Approx. 30-35kDa band observed in HepG2 cell lysates (calculated MW of 30.3kDa according to NP_068839.1). Recommended concentration: 0.1-0.3µg/ml. Primary incubation 1 hour at room temperature. Preliminary testing was unsuccessful on Rat and Mouse Brain for this particular batch.

IHC: Paraffin embedded Human Small Intestine. Recommended concentration: 2.5µg/ml.

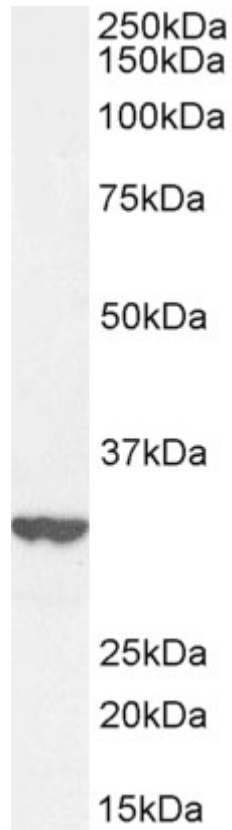
Immunofluorescence: Strong expression of the protein seen in the cytoplasm and Golgi apparatus of A431 and HeLa cells. Recommended concentration: 10µg/ml.

Flow Cytometry: Flow cytometric analysis of HeLa cells. Recommended concentration: 10ug/ml.

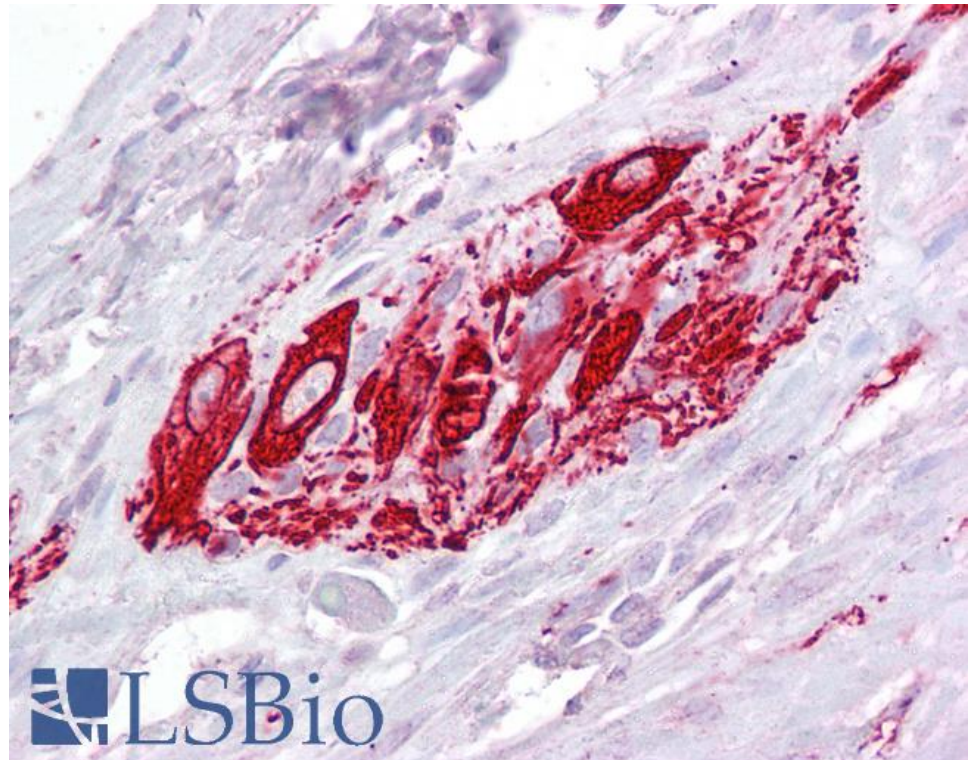
Species Reactivity

Tested: Human

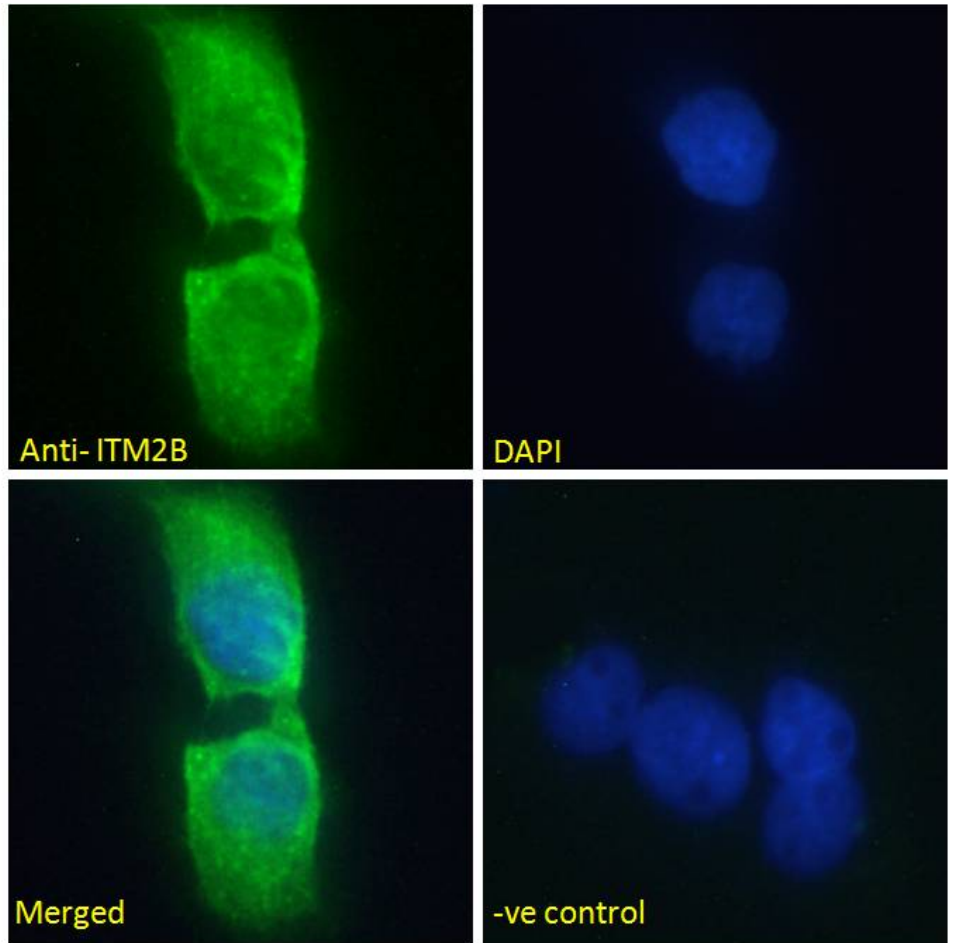
Expected from sequence similarity: Human, Mouse, Rat, Cow



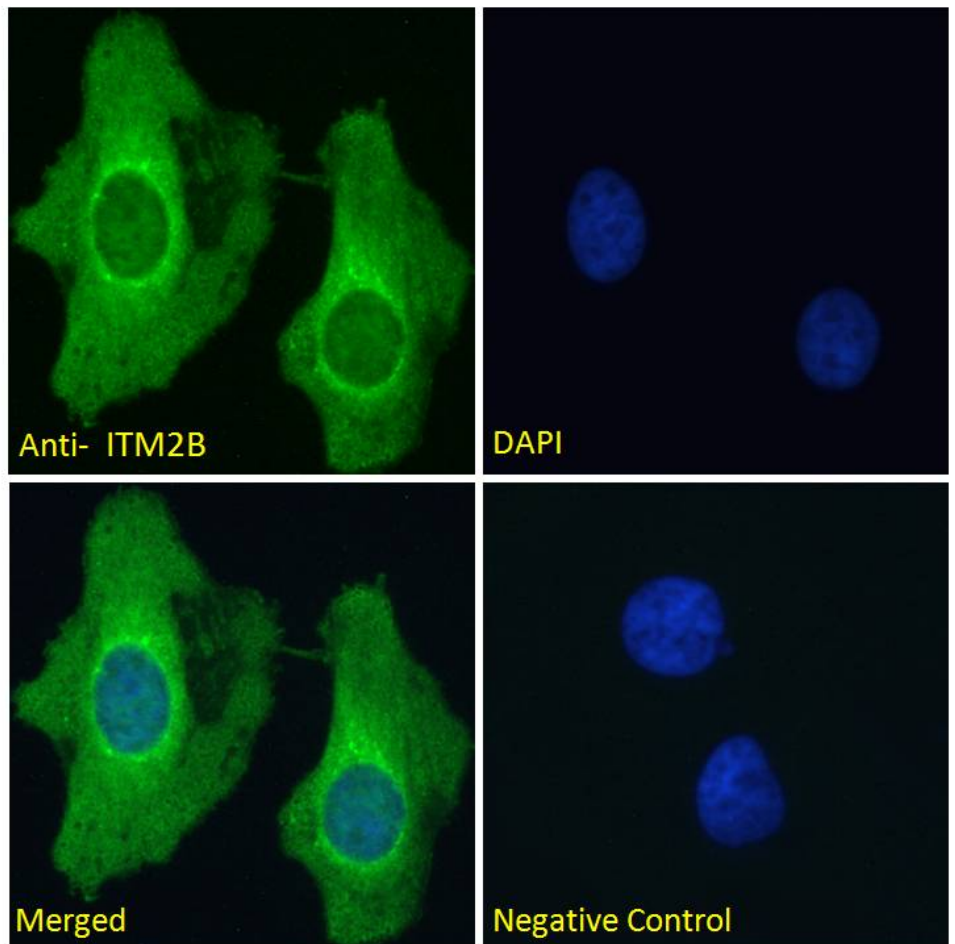
EB09138 (0.3 μ g/ml) staining of HepG2 cell lysate (35 μ g protein in RIPA buffer). Detected by chemiluminescence.



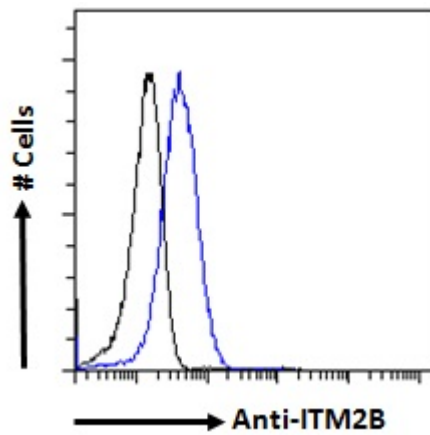
EB09138 (2.5 μ g/ml) staining of paraffin embedded Human Small Intestine. Steamed antigen retrieval with citrate buffer pH 6, AP-staining.



EB09138 Immunofluorescence analysis of paraformaldehyde fixed A431 cells, permeabilized with 0.15% Triton. Primary incubation 1hr (10ug/ml) followed by Alexa Fluor 488 secondary antibody (2ug/ml), showing Golgi apparatus and cytoplasmic staining. The nuclear stain is DAPI (blue). Negative control: Unimmunized goat IgG (10ug/ml) followed by Alexa Fluor 488 secondary antibody (2ug/ml).



EB09138 Immunofluorescence analysis of paraformaldehyde fixed HeLa cells, permeabilized with 0.15% Triton. Primary incubation 1hr (10ug/ml) followed by Alexa Fluor 488 secondary antibody (2ug/ml), showing Golgi apparatus and cytoplasmic staining. The nuclear stain is DAPI (blue). Negative control: Unimmunized goat IgG (10ug/ml) followed by Alexa Fluor 488 secondary antibody (2ug/ml).



EB09138 Flow cytometric analysis of paraformaldehyde fixed HeLa cells (blue line), permeabilized with 0.5% Triton. Primary incubation 1hr (10ug/ml) followed by Alexa Fluor 488 secondary antibody (1ug/ml). IgG control: Unimmunized goat IgG (black line) followed by Alexa Fluor 488 secondary antibody.