



UK Office

Everest Biotech Ltd

Cherwell Innovation Centre
77 Heyford Park
Upper Heyford
Oxfordshire
OX25 5HD
UK

Enquiries:

info@everestbiotech.com

Sales:

sales@everestbiotech.com

Tech support:

support@everestbiotech.com

Tel: +44 (0)1869 238326

Fax: +44 (0)1869 238327

US Office

Everest Biotech c/o Abcore

405 Maple Street, Suite A106
Ramona,
CA 92065
USA

Inquiries:

info@everestbiotech.com

Sales:

usasales@everestbiotech.com

Tech support:

support@everestbiotech.com

Tel: 888-320-4628 (toll-free)

Fax: 888-841-9041

www.everestbiotech.com

**Research Use Only. Not for
diagnostic or therapeutic use.**

EB10959 - Goat Anti-JAG1 Antibody

Size: 100µg specific antibody in 200µl



Target Protein

Principal Names: JAG1, jagged 1, AGS, AHD, AWS, CD339, HJ1, JAGL1, MGC104644

Official Symbol: JAG1

Accession Number(s): NP_000205.1

Human GeneID(s): [182](#)

Non-Human GeneID(s): 16449 (mouse), 29146 (rat)

Immunogen

Peptide with sequence C-TNKQDNRDLESAQS, from the C Terminus of the protein sequence according to NP_000205.1.

Please note the [peptide](#) is available for sale.

Purification and Storage

Purified from goat serum by ammonium sulphate precipitation followed by antigen affinity chromatography using the immunizing peptide.

Supplied at 0.5 mg/ml in Tris saline, 0.02% sodium azide, pH7.3 with 0.5% bovine serum albumin.

Aliquot and store at -20°C. Minimize freezing and thawing.

Applications Tested

Peptide ELISA: antibody detection limit dilution 1:8000.

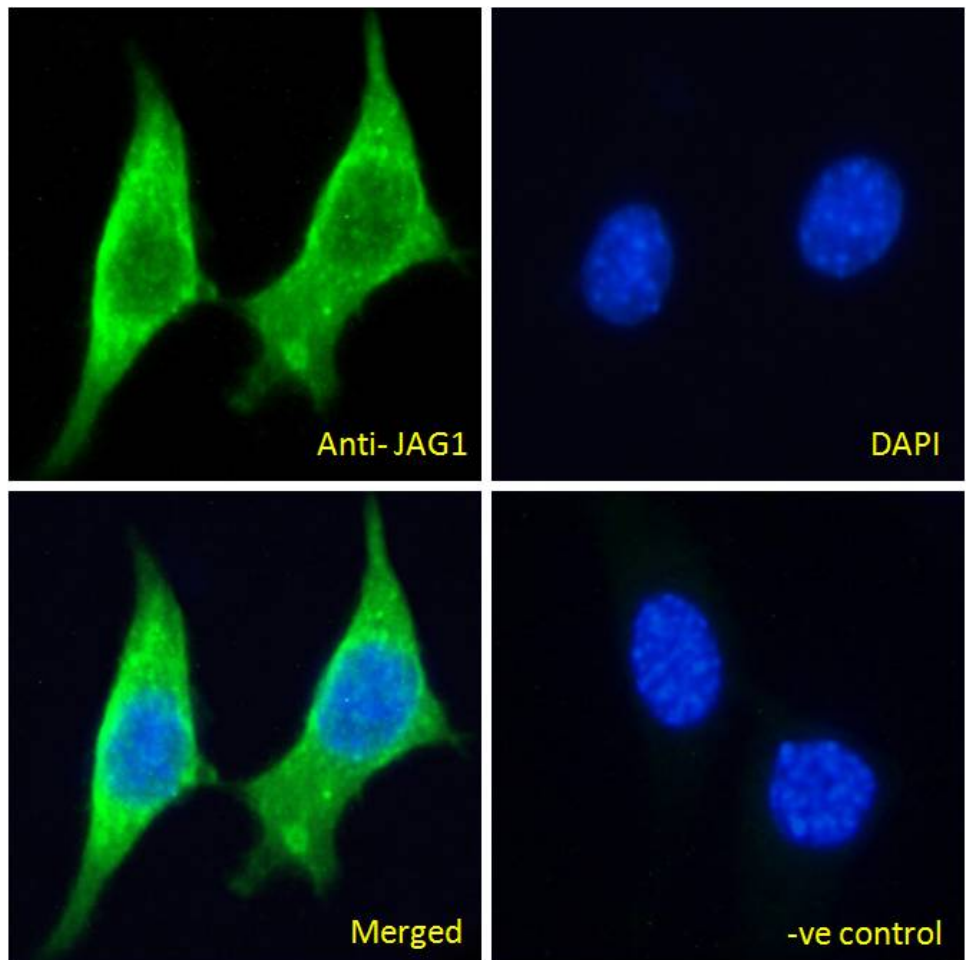
IHC: In paraffin embedded Human Kidney shows membrane staining in the epithelial cells of convoluted tubules. Recommended concentration, 2-4µg/ml.

Immunofluorescence: Strong expression of the protein seen in the cytoplasm of NIH3T3 cells. Recommended concentration: 5µg/ml.

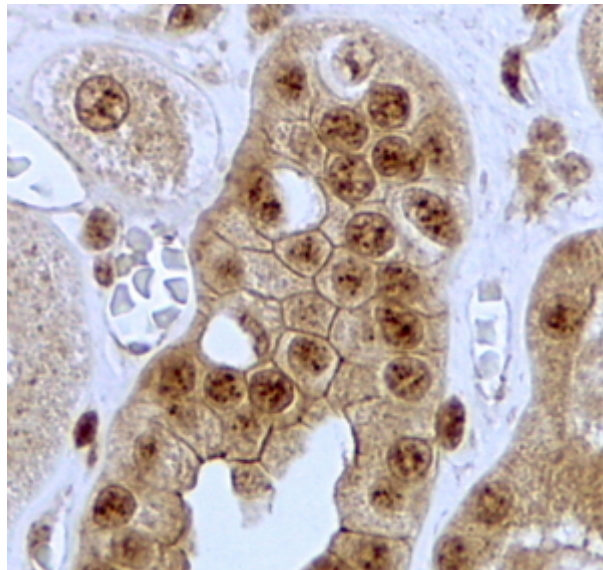
Species Reactivity

Tested: Human, Mouse

Expected from sequence similarity: Human, Mouse, Rat, Dog, Pig, Cow



EB10959 Immunofluorescence analysis of paraformaldehyde fixed NIH3T3 cells, permeabilized with 0.15% Triton. Primary incubation 1 hr (5ug/ml) followed by Alexa Fluor 488 secondary antibody (2ug/ml), showing cytoplasmic staining. The nuclear stain is DAPI (blue). Negative control: Unimmunized goat IgG (5ug/ml) followed by Alexa Fluor 488 secondary antibody (2ug/ml).



EB10959 (2ug/ml) staining of paraffin embedded Human Kidney. Steamed antigen retrieval with citrate buffer pH 6, HRP-staining.