



## UK Office

### Everest Biotech Ltd

Cherwell Innovation Centre  
77 Heyford Park  
Upper Heyford  
Oxfordshire  
OX25 5HD  
UK

Enquiries:

[info@everestbiotech.com](mailto:info@everestbiotech.com)

Sales:

[sales@everestbiotech.com](mailto:sales@everestbiotech.com)

Tech support:

[support@everestbiotech.com](mailto:support@everestbiotech.com)

Tel: +44 (0)1869 238326

Fax: +44 (0)1869 238327

## US Office

### Everest Biotech c/o Abcore

405 Maple Street, Suite A106  
Ramona,  
CA 92065  
USA

Inquiries:

[info@everestbiotech.com](mailto:info@everestbiotech.com)

Sales:

[usasales@everestbiotech.com](mailto:usasales@everestbiotech.com)

Tech support:

[support@everestbiotech.com](mailto:support@everestbiotech.com)

Tel: 888-320-4628 (toll-free)

Fax: 888-841-9041

[www.everestbiotech.com](http://www.everestbiotech.com)

**Research Use Only. Not for  
diagnostic or therapeutic use.**

## EB05075 - Goat Anti-JAK2 Antibody

Size: 100µg specific antibody in 200µl



### Target Protein

**Principal Names:** JAK2, Janus kinase 2 (a protein tyrosine kinase), tyrosine-protein kinase JAK2

**Official Symbol:** JAK2

**Accession Number(s):** AAC23653.1; NP\_001309133.1; NP\_001309127.1

**Human GeneID(s):** [3717](#)

**Important Comments:** On restricted sale due to demands of patent holder. Not for sale in USA, if you are outside the USA then please contact [sales@everestbiotech.com](mailto:sales@everestbiotech.com) to see if we can sell into your territory. The peptide sequence used (from AAC23653.1) differs by one residue from the RefSeq entry (NP\_004963.1) It is expected to recognize both sequences.

### Immunogen

Peptide with sequence C-RVDQVRDNMAG, from the C Terminus of the protein sequence according to AAC23653.1; NP\_001309133.1; NP\_001309127.1.

Please note the [peptide](#) is available for sale.

### Purification and Storage

Purified from goat serum by ammonium sulphate precipitation followed by antigen affinity chromatography using the immunizing peptide.

Supplied at 0.5 mg/ml in Tris saline, 0.02% sodium azide, pH7.3 with 0.5% bovine serum albumin.

Aliquot and store at -20°C. Minimize freezing and thawing.

### Applications Tested

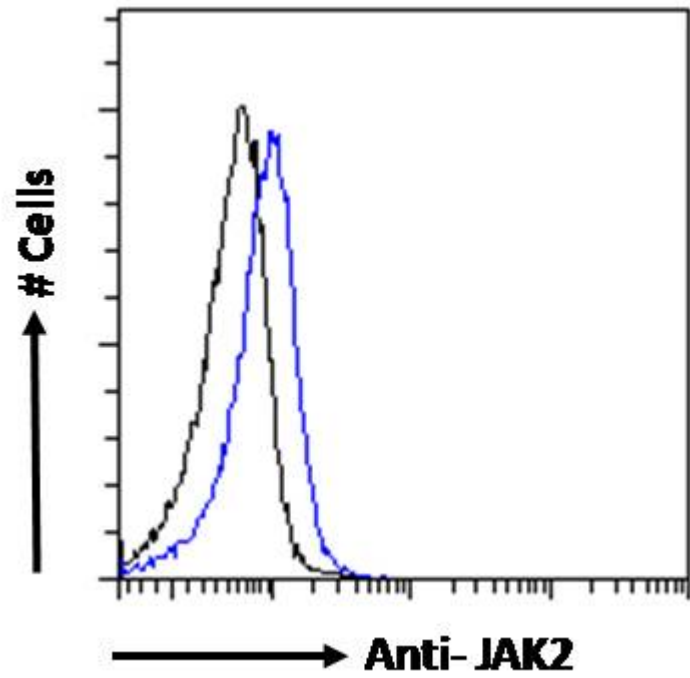
**Peptide ELISA:** antibody detection limit dilution 1:32000.

**Flow Cytometry:** Flow cytometric analysis of K562 cells. Recommended concentration: 10ug/ml.

### Species Reactivity

**Tested:** Human

**Expected from sequence similarity:** Human



EB05075 Flow cytometric analysis of paraformaldehyde fixed K562 cells (blue line), permeabilized with 0.5% Triton. Primary incubation 1hr (10ug/ml) followed by Alexa Fluor 488 secondary antibody (0.4ug/ml). IgG control: Unimmunized goat IgG (black line) followed by Alexa Fluor 488 secondary antibody.