



International Office

Everest Biotech Ltd

Vector Laboratories, Inc.
6737 Mowry Ave
Newark, CA 94560
United States

Customer Service:

customerservice@vectorlabs.com

Technical Service:

technical@vectorlabs.com

Tel: +1 (800) 227-6666

www.everestbiotech.com

**Research Use Only. Not for
diagnostic or therapeutic use.**

EB06455 - Goat Anti-JIK / TAOK3 Antibody

Size: 100µg specific antibody in 200µl



Target Protein

Principal Names: TAOK3, JIK, TAO kinase 3, DPK, STE20-like kinase, STE2-like kinase, DKFZp666H245, FLJ31808, MAP3K18

Official Symbol: TAOK3

Accession Number(s): NP_057365.3; NP_001333420.1

Human GenelD(s): [51347](#)

Non-Human GenelD(s): 304530 (rat)

Immunogen

Peptide with sequence CHKKDHFVIRDEAGHGD, from the internal region of the protein sequence according to NP_057365.3; NP_001333420.1.

Please note the [peptide](#) is available for sale.

Purification and Storage

Purified from goat serum by ammonium sulphate precipitation followed by antigen affinity chromatography using the immunizing peptide.

Supplied at 0.5 mg/ml in Tris saline, 0.02% sodium azide, pH7.3 with 0.5% bovine serum albumin.

Aliquot and store at -20°C. Minimize freezing and thawing.

Applications Tested

Peptide ELISA: antibody detection limit dilution 1:32000.

Western blot: Approx 100kDa band observed in human Liver lysate (calculated MW of 105kDa according to NP_057365). Recommended concentration: 0.3-1.0 µg/ml.

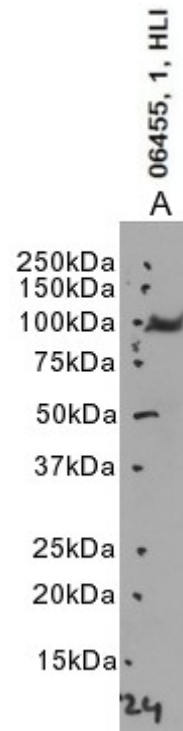
IHC: In paraffin embedded Human Prostate shows staining of cytoplasm of secretory cells in the glands. Recommended concentration, 2-3µg/ml.

Flow Cytometry: Flow cytometric analysis of Human Peripheral Blood Leucocyte cells. Recommended concentration: 10ug/ml.

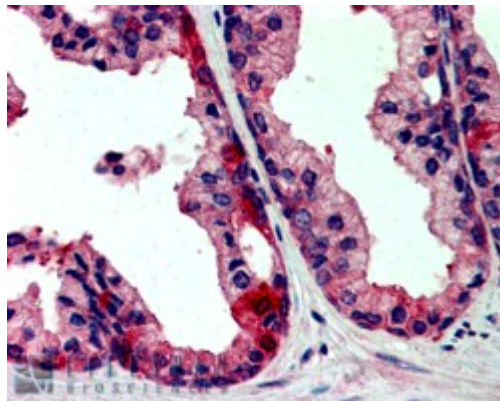
Species Reactivity

Tested: Human

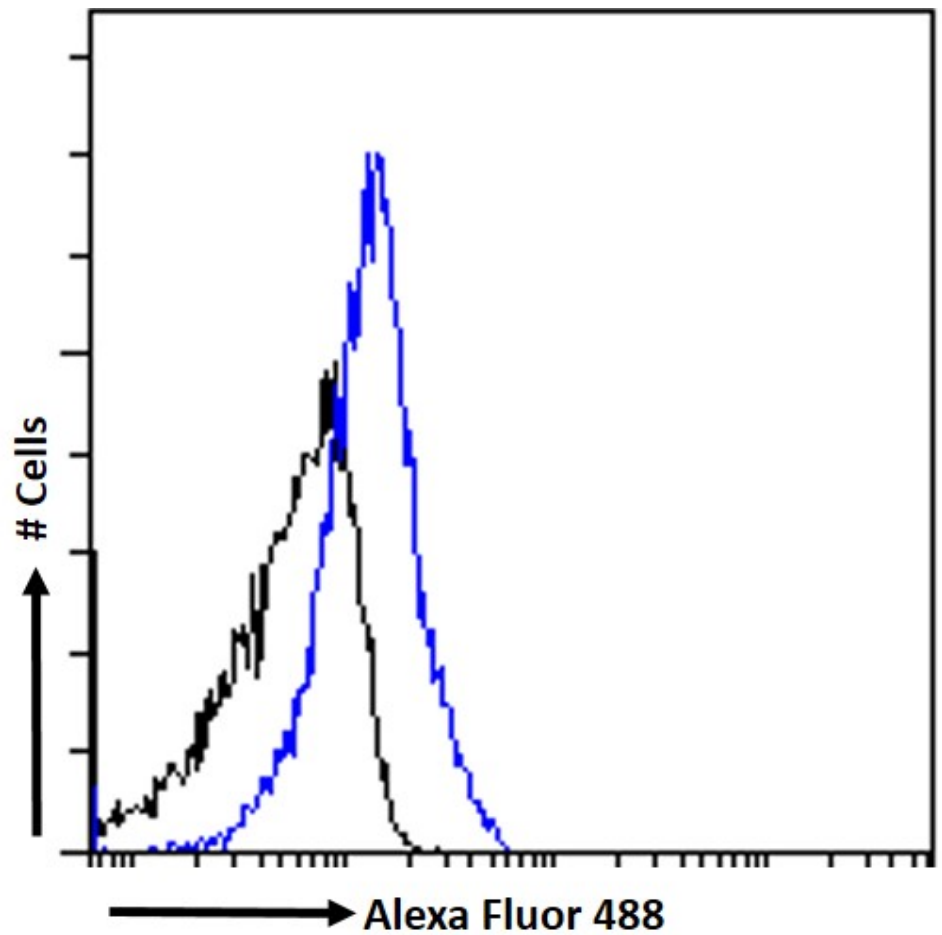
Expected from sequence similarity: Human, Cow



EB06455 optimised QC. Primary incubation 1 hour at room temperature.
 Image A: Human Liver lysate at primary Ab concentration 1µg/ml. (Loaded 35µg protein in RIPA buffer, per lane). Detected by chemiluminescence.



EB06455 (2.5µg/ml) staining of paraffin embedded Human Prostate. Steamed antigen retrieval with citrate buffer pH 6, AP-staining.



EB06455 Flow cytometric analysis of paraformaldehyde fixed (HPBL) human peripheral blood lymphocytes cells (blue line) permeabilized with 0.5% Triton. Primary incubation 1hr (10ug/ml) followed by Alexa Fluor 488® conjugated secondary antibody (1ug/ml). IgG control: Unimmunized goat IgG (black line) followed by Alexa Fluor 488 secondary antibody.