



International Office

Everest Biotech Ltd

Vector Laboratories, Inc.
6737 Mowry Ave
Newark, CA 94560
United States

Customer Service:

customerservice@vectorlabs.com

Technical Service:

technical@vectorlabs.com

Tel: +1 (800) 227-6666

www.everestbiotech.com

**Research Use Only. Not for
diagnostic or therapeutic use.**

EB13078 - Goat Anti-JIP1 / MAPK8IP1 (aa265-279) Antibody

Size: 100µg specific antibody in 200µl



Target Protein

Principal Names: MAPK8IP1, mitogen-activated protein kinase 8 interacting protein 1; IB1, JIP-1, JIP1, PRKM8IP, C-Jun-amino-terminal kinase-interacting protein 1, IB-1, JNK, JNK MAP kinase scaffold protein 1, JNK-interacting protein 1, PRKM8 interacting protein; islet-brain 1

Official Symbol: MAPK8IP1

Accession Number(s): NP_005447.1

Human GeneID(s): [9479](#)

Non-Human GeneID(s): 19099 (mouse), 116457 (rat)

Immunogen

Peptide with sequence C-DRIHYQADVRLATE, from the internal region of the protein sequence according to NP_005447.1.

Please note the [peptide](#) is available for sale.

Purification and Storage

Purified from goat serum by ammonium sulphate precipitation followed by antigen affinity chromatography using the immunizing peptide.

Supplied at 0.5 mg/ml in Tris saline, 0.02% sodium azide, pH7.3 with 0.5% bovine serum albumin.

Aliquot and store at -20°C. Minimize freezing and thawing.

Applications Tested

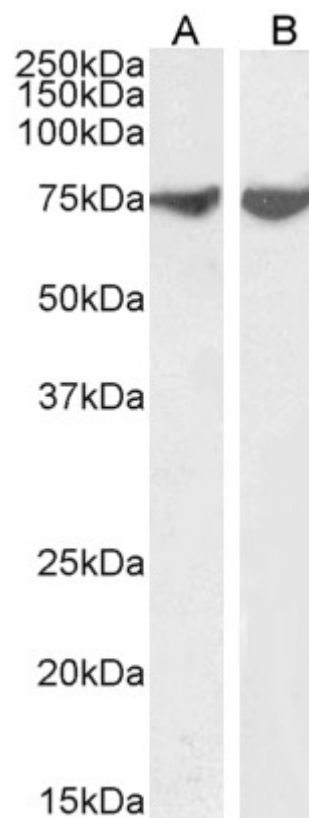
Peptide ELISA: antibody detection limit dilution 1:32000.

Western blot: Approx 75kDa band observed in Human Brain (Amygdala and Cerebellum) lysates (calculated MW of 77.5kDa according to NP_005447.1). Recommended concentration: 0.3-1µg/ml. Primary incubation 1 hour at room temperature.

Species Reactivity

Tested: Human

Expected from sequence similarity: Human, Mouse, Rat, Dog, Pig



EB13078 (1 μ g/ml) staining of Human Amygdala (A) and Cerebellum (B) lysate (35 μ g protein in RIPA buffer).
Detected by chemiluminescence.