

## UK Office

### Everest Biotech Ltd

Cherwell Innovation Centre  
77 Heyford Park  
Upper Heyford  
Oxfordshire  
OX25 5HD  
UK

Enquiries:

[info@everestbiotech.com](mailto:info@everestbiotech.com)

Sales:

[sales@everestbiotech.com](mailto:sales@everestbiotech.com)

Tech support:

[support@everestbiotech.com](mailto:support@everestbiotech.com)

Tel: +44 (0)1869 238326

[www.everestbiotech.com](http://www.everestbiotech.com)

**Research Use Only. Not for  
diagnostic or therapeutic use.**

## EB09406 - Goat Anti-JUNB Antibody

Size: 100µg specific antibody in 200µl



### Target Protein

**Principal Names:** JUNB, jun B proto-oncogene, AP-1, activator protein 1

**Official Symbol:** JUNB

**Accession Number(s):** NP\_002220.1

**Human GeneID(s):** [3726](#)

**Non-Human GeneID(s):** 16477 (mouse), 24517 (rat)

**Important Comments:** This antibody may also cross-react with human, mouse, rat, cow, dog JUN (GeneID: 3725, 16476, 24516, 280831, 609429).

### Immunogen

Peptide with sequence C-TLKAENAGLSSTAG, from the internal region of the protein sequence according to NP\_002220.1.

Please note the [peptide](#) is available for sale.

### Purification and Storage

Purified from goat serum by ammonium sulphate precipitation followed by antigen affinity chromatography using the immunizing peptide.

Supplied at 0.5 mg/ml in Tris saline, 0.02% sodium azide, pH7.3 with 0.5% bovine serum albumin.

Aliquot and store at -20°C. Minimize freezing and thawing.

### Applications Tested

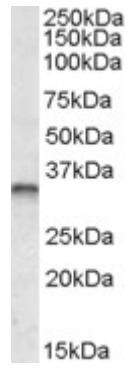
**Peptide ELISA:** antibody detection limit dilution 1:64000.

**Western blot:** Approx 35kDa band observed in Human Breast Cancer lysates (calculated MW of 35.9kDa according to NP\_002220.1). Recommended concentration: 0.3-1µg/ml.

### Species Reactivity

**Tested:** Human

**Expected from sequence similarity:** Human, Mouse, Rat, Cow, Dog



EB09406 (0.3 $\mu$ g/ml) staining of Human Breast Cancer lysate (35 $\mu$ g protein in RIPA buffer). Primary incubation was 1 hour. Detected by chemiluminescence.