



UK Office

Everest Biotech Ltd

Cherwell Innovation Centre
77 Heyford Park
Upper Heyford
Oxfordshire
OX25 5HD
UK

Enquiries:

info@everestbiotech.com

Sales:

sales@everestbiotech.com

Tech support:

support@everestbiotech.com

Tel: +44 (0)1869 238326

Fax: +44 (0)1869 238327

US Office

Everest Biotech c/o Abcore

405 Maple Street, Suite A106
Ramona,
CA 92065
USA

Inquiries:

info@everestbiotech.com

Sales:

usasales@everestbiotech.com

Tech support:

support@everestbiotech.com

Tel: 888-320-4628 (toll-free)

Fax: 888-841-9041

www.everestbiotech.com

**Research Use Only. Not for
diagnostic or therapeutic use.**

EB06143 - Goat Anti-Kalirin Antibody

Size: 100µg specific antibody in 200µl



Target Protein

Principal Names: KALRN, kalirin, RhoGEF kinase, FLJ16443, HAPIP, TRAD, duo, huntingtin-associated protein interacting protein (duo), serine/threonine kinase with Dbl- and pleckstrin homology domains, hCG_2022551, DUET, DUO, FLJ12332, FLJ18196, FLJ18623

Official Symbol: KALRN

Accession Number(s): NP_003938.1; NP_001309918.1; NP_001309919.1; NP_001309920.1; NP_001309921.1

Human GeneID(s): [8997](#)

Non-Human GeneID(s): 545156 (mouse), 84009 (rat)

Important Comments: This antibody is expected to recognise NP_003938.1;(isoform 2), NP_001309918.1 (isoform 5), NP_001309919.1;(isoform 6), NP_001309920.1 (isoform 7), and NP_001309921.1 (isoform 8).

Immunogen

Peptide with sequence C-RWHLGPGDPFSTYV, from the C Terminus of the protein sequence according to NP_003938.1; NP_001309918.1; NP_001309919.1; NP_001309920.1; NP_001309921.1.

Please note the [peptide](#) is available for sale.

Purification and Storage

Purified from goat serum by ammonium sulphate precipitation followed by antigen affinity chromatography using the immunizing peptide.

Supplied at 0.5 mg/ml in Tris saline, 0.02% sodium azide, pH7.3 with 0.5% bovine serum albumin.

Aliquot and store at -20°C. Minimize freezing and thawing.

Applications Tested

Peptide ELISA: antibody detection limit dilution 1:16000.

Western blot: Preliminary testing showed a band at approx.. 200kDa in Rat Brain lysate, after 0.1ug/ml antibody staining (calculated Mwt. of 192.5 kDa according to XP_038944588.1). Primary incubation 1 hour at room temperature.

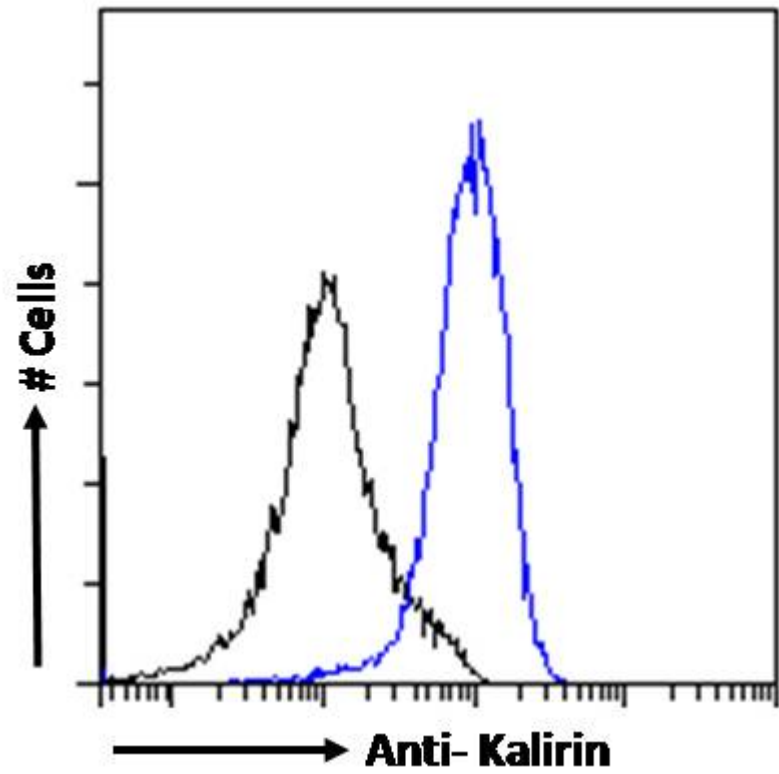
IHC: Paraffin embedded Human Brain (Cortex). Recommended concentration: 4-5µg/ml.

Flow Cytometry: Flow cytometric analysis of HepG2 cells. Recommended concentration: 10ug/ml.

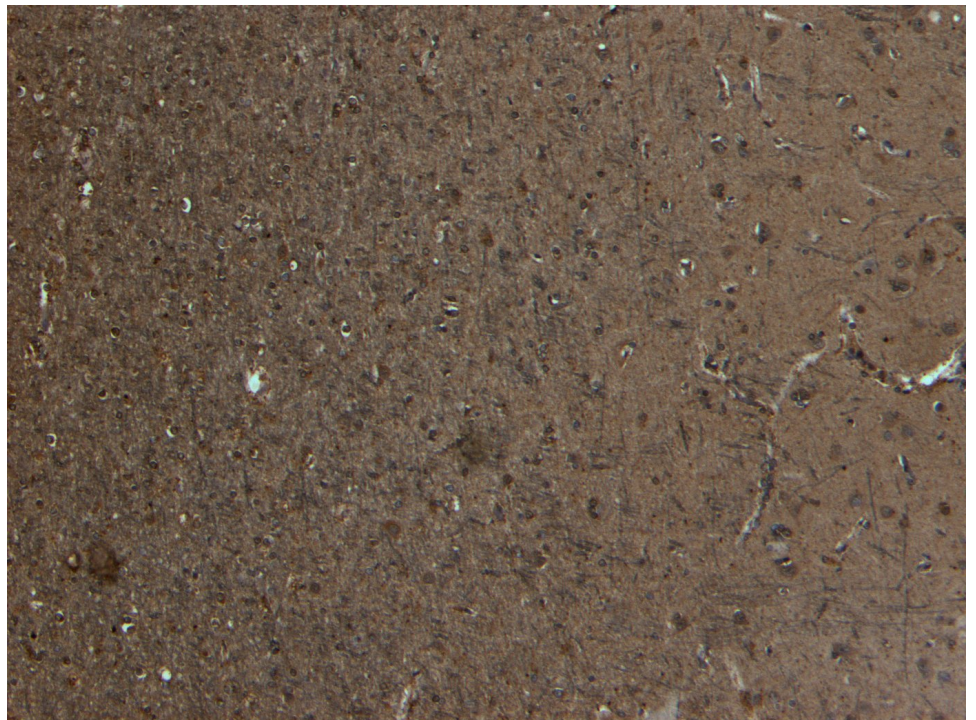
Species Reactivity

Tested: Human

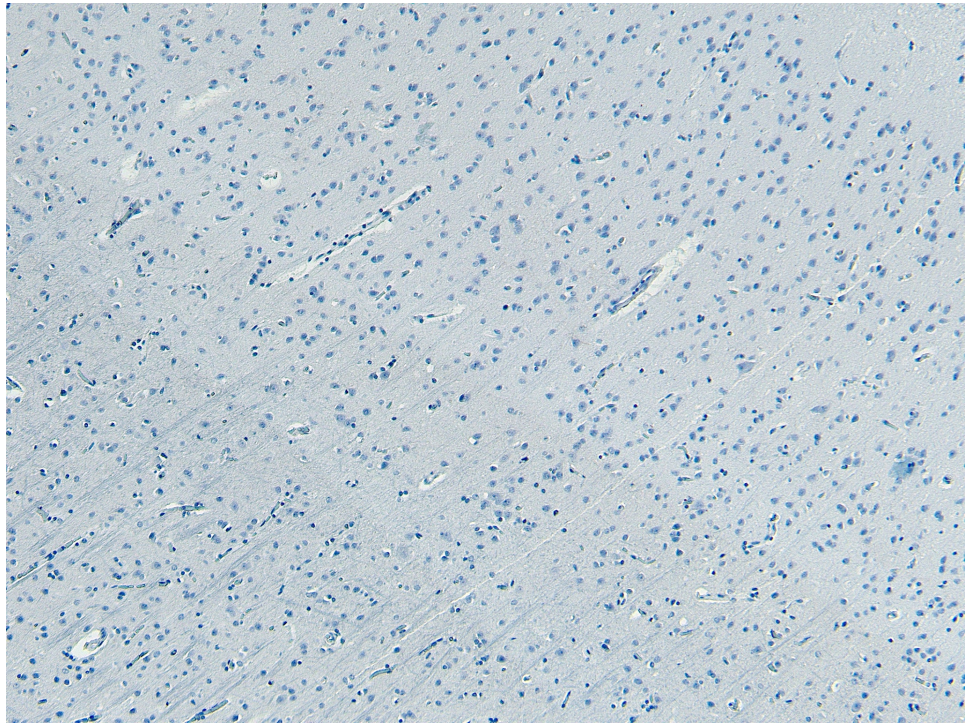
Expected from sequence similarity: Human, Mouse, Rat



EB06143 Flow cytometric analysis of paraformaldehyde fixed A431 cells (blue line), permeabilized with 0.5% Triton. Primary incubation 1hr (10ug/ml) followed by Alexa Fluor 488 secondary antibody (1ug/ml). IgG control: Unimmunized goat IgG (black line) followed by Alexa Fluor 488 secondary antibody.



EB06143 (5µg/ml) staining of paraffin embedded Human Cortex. Heat induced antigen retrieval with citrate buffer pH 6, HRP-staining.



EB06143 Negative Control showing staining of paraffin embedded Human Cortex, with no primary antibody.