



## UK Office

### Everest Biotech Ltd

Cherwell Innovation Centre  
77 Heyford Park  
Upper Heyford  
Oxfordshire  
OX25 5HD  
UK

Enquiries:

[info@everestbiotech.com](mailto:info@everestbiotech.com)

Sales:

[sales@everestbiotech.com](mailto:sales@everestbiotech.com)

Tech support:

[support@everestbiotech.com](mailto:support@everestbiotech.com)

Tel: +44 (0)1869 238326

Fax: +44 (0)1869 238327

## US Office

### Everest Biotech c/o Abcore

405 Maple Street, Suite A106  
Ramona,  
CA 92065  
USA

Inquiries:

[info@everestbiotech.com](mailto:info@everestbiotech.com)

Sales:

[usasales@everestbiotech.com](mailto:usasales@everestbiotech.com)

Tech support:

[support@everestbiotech.com](mailto:support@everestbiotech.com)

Tel: 888-320-4628 (toll-free)

Fax: 888-841-9041

[www.everestbiotech.com](http://www.everestbiotech.com)

**Research Use Only. Not for  
diagnostic or therapeutic use.**

## EB07018 - Goat Anti-Karyopherin (importin) beta 1 Antibody

Size: 100µg specific antibody in 200µl



### Target Protein

**Principal Names:** karyopherin (importin) beta 1, HGNC:6400, KPNB1, IMB1, IPOB, Impnb, MGC2155, MGC2156, MGC2157, NTF97, importin 90, importin beta-1 subunit, karyopherin beta 1, nuclear factor p97, KapB1, IPO1

**Official Symbol:** KPNB1

**Accession Number(s):** NP\_002256.2; NP\_001263382.1

**Human GeneID(s):** [3837](#)

**Non-Human GeneID(s):** 16211 (mouse), 24917 (rat)

### Immunogen

Peptide with sequence C-RRSKTNKAKTLAT, from the C Terminus of the protein sequence according to NP\_002256.2; NP\_001263382.1.

Please note the [peptide](#) is available for sale.

### Purification and Storage

Purified from goat serum by ammonium sulphate precipitation followed by antigen affinity chromatography using the immunizing peptide.

Supplied at 0.5 mg/ml in Tris saline, 0.02% sodium azide, pH7.3 with 0.5% bovine serum albumin.

Aliquot and store at -20°C. Minimize freezing and thawing.

### Applications Tested

**Peptide ELISA:** antibody detection limit dilution 1:32000.

**Western blot:** Approx 90-95-kDa band observed in lysates of cell lines A431, Daudi, HEK293, HeLa, Jurkat, Kelly and KNRK (calculated MW of 97.2kDa according to Human NP\_002256.2 and Rat NP\_058759.2). Recommended concentration: 0.01-0.1µg/ml.

Primary incubation 1 hour at room temperature.

**IHC:** Paraffin embedded Human Spleen. Recommended concentration: 5µg/ml.

**Immunofluorescence:** Strong expression of the protein seen in U2OS cells.

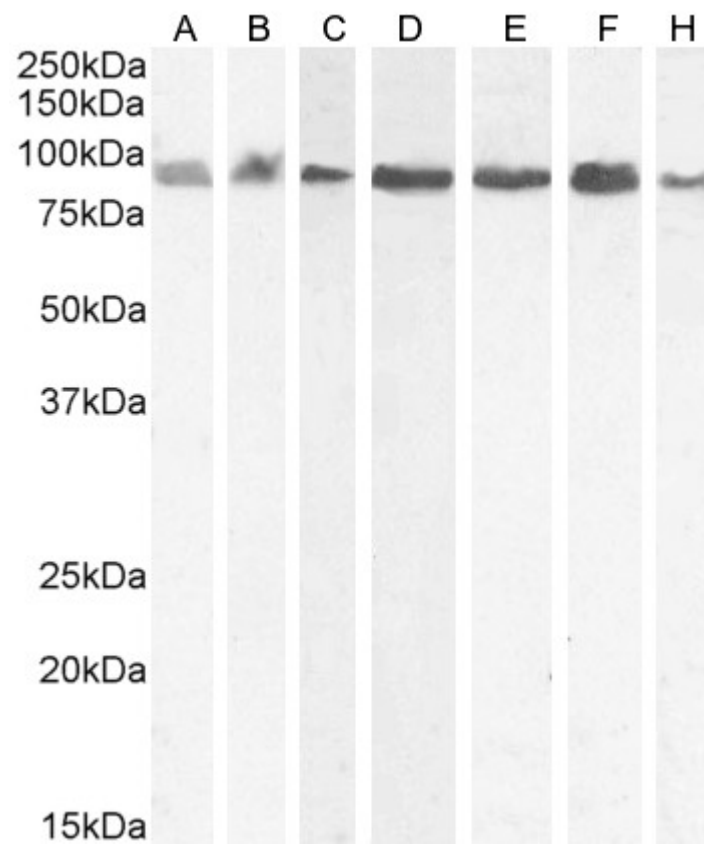
Recommended concentration: 10µg/ml.

**Flow Cytometry:** Flow cytometric analysis of A431 cells. Recommended concentration: 10ug/ml.

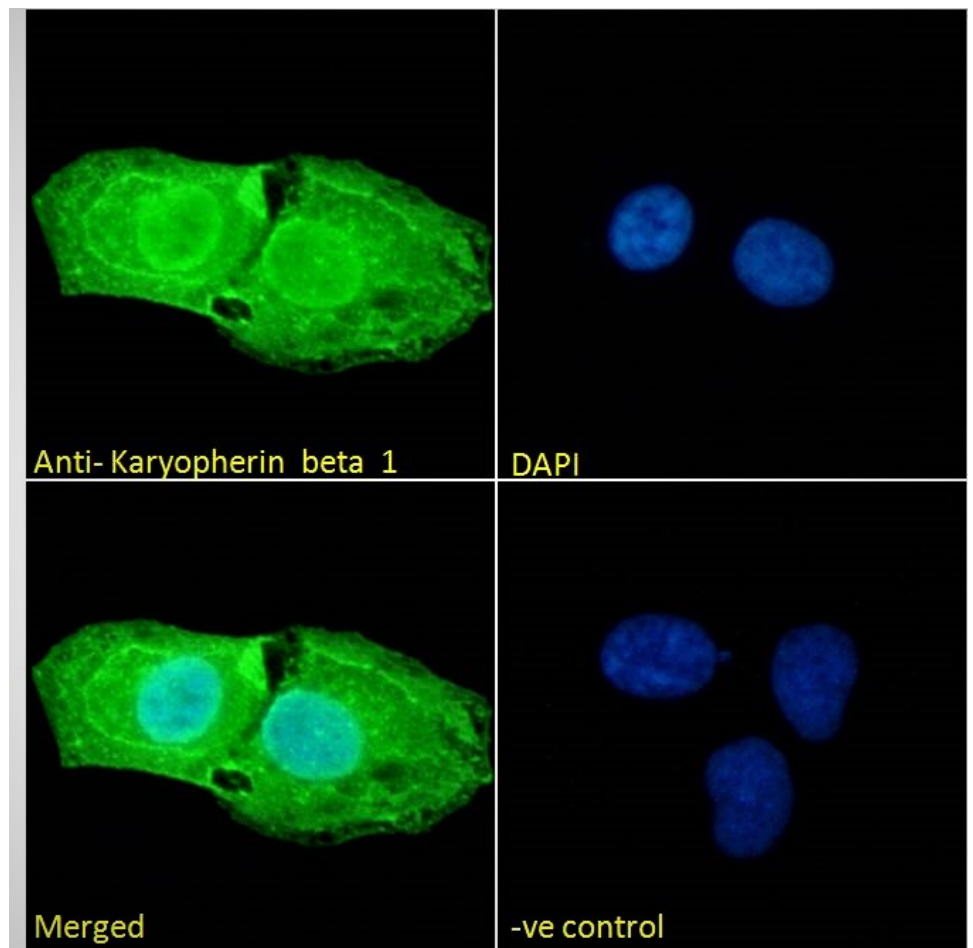
### Species Reactivity

**Tested:** Human, Rat

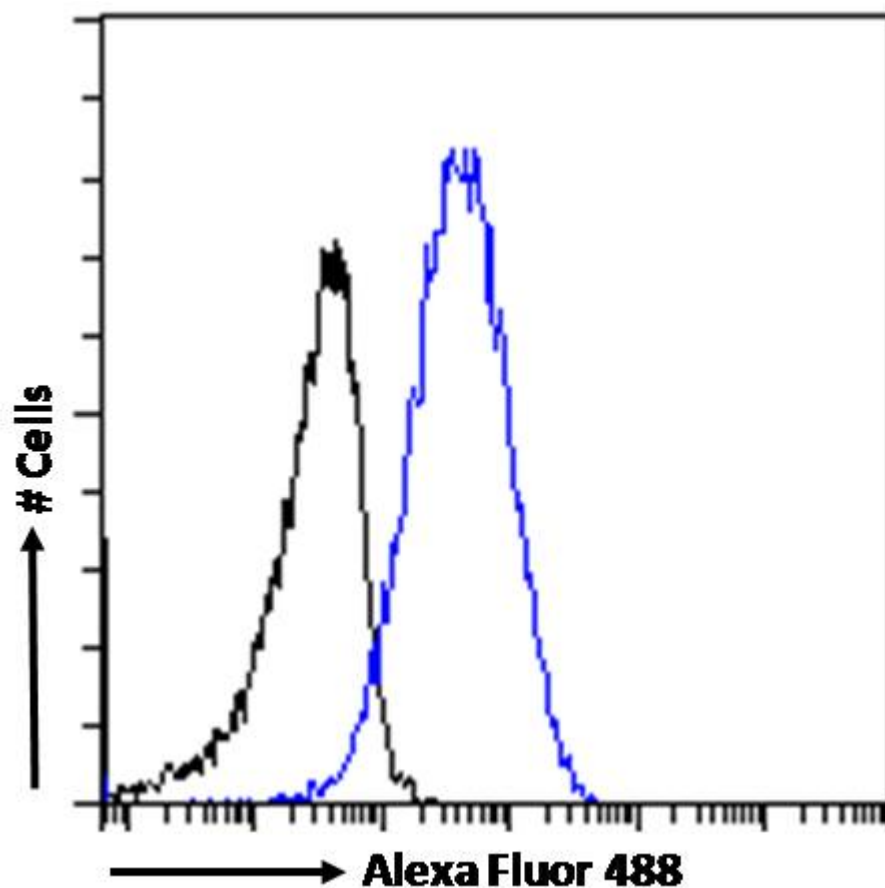
**Expected from sequence similarity:** Human, Mouse, Rat, Dog, Cow



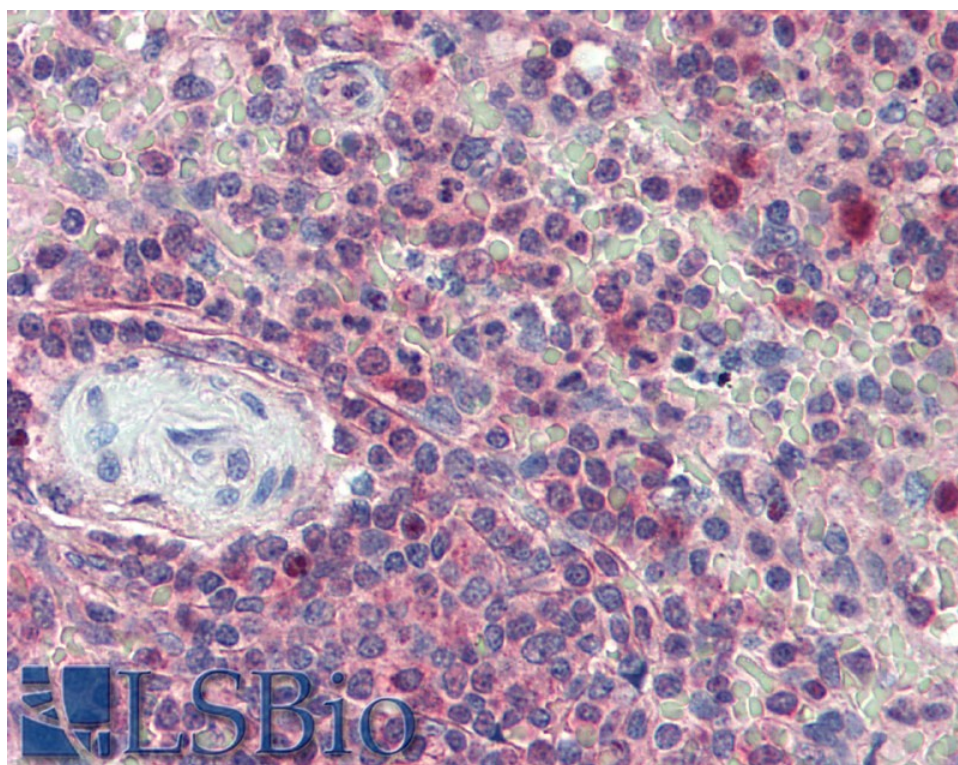
EB07018 (0.03 $\mu$ g/ml) staining of A431 (A), HEK293 (B), Jurkat (C), (0.01 $\mu$ g/ml) Daudi (D), HeLa (E) and (0.1 $\mu$ g/ml) Kelly (F) and KNRK (G) cell lysate (35 $\mu$ g protein in RIPA buffer). Detected by chemiluminescence.



EB07018 Immunofluorescence analysis of paraformaldehyde fixed U2OS cells, permeabilized with 0.15% Triton. Primary incubation 1hr (10ug/ml) followed by Alexa Fluor 488 secondary antibody (2ug/ml), showing nuclear membrane, nuclear and cytoplasmic staining. The nuclear stain is DAPI (blue). Negative control: Unimmunized goat IgG (10ug/ml) followed by Alexa Fluor 488 secondary antibody (2ug/ml).



EB07018 Flow cytometric analysis of paraformaldehyde fixed A431 cells (blue line), permeabilized with 0.5% Triton. Primary incubation 1hr (10ug/ml) followed by Alexa Fluor 488 secondary antibody (1ug/ml). IgG control: Unimmunized goat IgG (black line) followed by Alexa Fluor 488 secondary antibody.



EB07018 (5µg/ml) staining of paraffin embedded Human Spleen. Steamed antigen retrieval with citrate buffer pH 6, AP-staining.