



UK Office

Everest Biotech Ltd

Cherwell Innovation Centre
77 Heyford Park
Upper Heyford
Oxfordshire
OX25 5HD
UK

Enquiries:

info@everestbiotech.com

Sales:

sales@everestbiotech.com

Tech support:

support@everestbiotech.com

Tel: +44 (0)1869 238326

Fax: +44 (0)1869 238327

US Office

Everest Biotech c/o Abcore

405 Maple Street, Suite A106
Ramona,
CA 92065
USA

Inquiries:

info@everestbiotech.com

Sales:

usasales@everestbiotech.com

Tech support:

support@everestbiotech.com

Tel: 888-320-4628 (toll-free)

Fax: 888-841-9041

www.everestbiotech.com

**Research Use Only. Not for
diagnostic or therapeutic use.**

EB08088 - Goat Anti-KCC1 / SLC12A4 Antibody

Size: 100µg specific antibody in 200µl



Target Protein

Principal Names: SLC12A4, KCC1, solute carrier family 12 (potassium/chloride transporters), member 4, FLJ40489, potassium transport protein, potassium/chloride cotransporter 1

Official Symbol: SLC12A4

Accession Number(s): NP_005063.1

Human GeneID(s): [6560](#)

Non-Human GeneID(s): 20498 (mouse), 29501 (rat)

Immunogen

Peptide with sequence C-DPSHAPDNFRE, from the internal region of the protein sequence according to NP_005063.1.

Please note the [peptide](#) is available for sale.

Purification and Storage

Purified from goat serum by ammonium sulphate precipitation followed by antigen affinity chromatography using the immunizing peptide.

Supplied at 0.5 mg/ml in Tris saline, 0.02% sodium azide, pH7.3 with 0.5% bovine serum albumin.

Aliquot and store at -20°C. Minimize freezing and thawing.

Applications Tested

Peptide ELISA: antibody detection limit dilution 1:4000.

Western blot: Approx 150kDa band observed in Human Heart lysates (calculated MW of 121kDa according to NP_005063.1). Recommended concentration: 0.3-1 µg/ml.

IHC: Paraffin embedded Human Placenta. Recommended concentration: 5 µg/ml.

Species Reactivity

Tested: Human

Expected from sequence similarity: Human, Mouse, Rat, Dog

Specific Reference

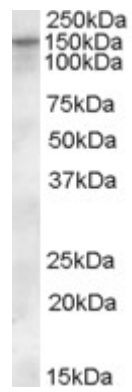
This antibody has been successfully used in Western blot in Human:

Wei WC, Akerman CJ, Newey SE, Pan J, Clinch NW, Jacob Y, Shen MR, Wilkins RJ, Ellory JC.

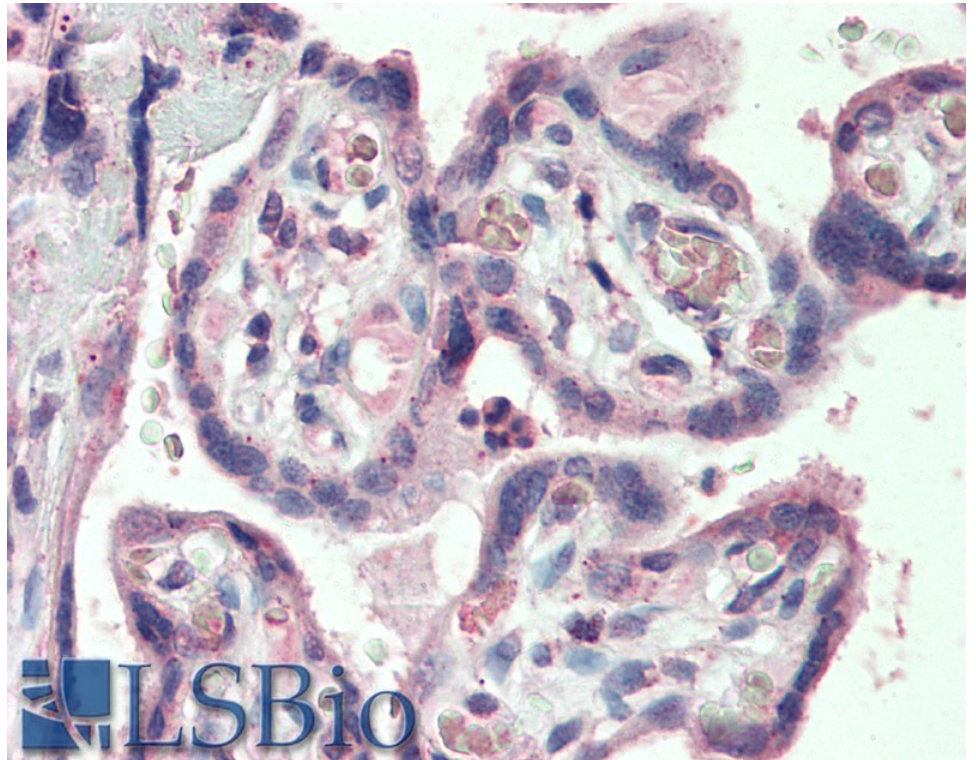
The potassium-chloride cotransporter 2 promotes cervical cancer cell migration and invasion by an ion transport-independent mechanism.

J Physiol. 2011 Nov 15;589(Pt 22):5349-59.

PMID: 21911617



EB08088 (0.3 μ g/ml) staining of Human Heart lysate (35 μ g protein in RIPA buffer). Primary incubation was 1 hour. Detected by chemiluminescence.



EB08088 (5 μ g/ml) staining of paraffin embedded Human Placenta. Steamed antigen retrieval with citrate buffer pH 6, AP-staining.