

UK Office

Everest Biotech Ltd

Cherwell Innovation Centre
77 Heyford Park
Upper Heyford
Oxfordshire
OX25 5HD
UK

Enquiries:

info@everestbiotech.com

Sales:

sales@everestbiotech.com

Tech support:

support@everestbiotech.com

Tel: +44 (0)1869 238326

www.everestbiotech.com

**Research Use Only. Not for
diagnostic or therapeutic use.**

EB09766 - Goat Anti-KCNE3 Antibody

Size: 100µg specific antibody in 200µl



Target Protein

Principal Names: KCNE3, potassium voltage-gated channel, Isk-related family, member 3, DKFZp781H21101, HOKPP, MGC102685, MGC129924, MiRP2, ardiac voltage-gated potassium channel accessory subunit, minK-related peptide 2, minimum potassium ion channel-related peptide 2, potassium voltage-gated channel subfamily E member 3, voltage-gated K⁺ channel subunit MIRP2

Official Symbol: KCNE3

Accession Number(s): NP_005463.1

Human GeneID(s): [10008](#)

Non-Human GeneID(s): 57442 (mouse), 63883 (rat)

Immunogen

Peptide with sequence C-PDNQTEERRASLP, from the Internal region of the protein sequence according to NP_005463.1.

Please note the [peptide](#) is available for sale.

Purification and Storage

Purified from goat serum by ammonium sulphate precipitation followed by antigen affinity chromatography using the immunizing peptide.

Supplied at 0.5 mg/ml in Tris saline, 0.02% sodium azide, pH7.3 with 0.5% bovine serum albumin.

Aliquot and store at -20°C. Minimize freezing and thawing.

Applications Tested

Peptide ELISA: antibody detection limit dilution 1:1000.

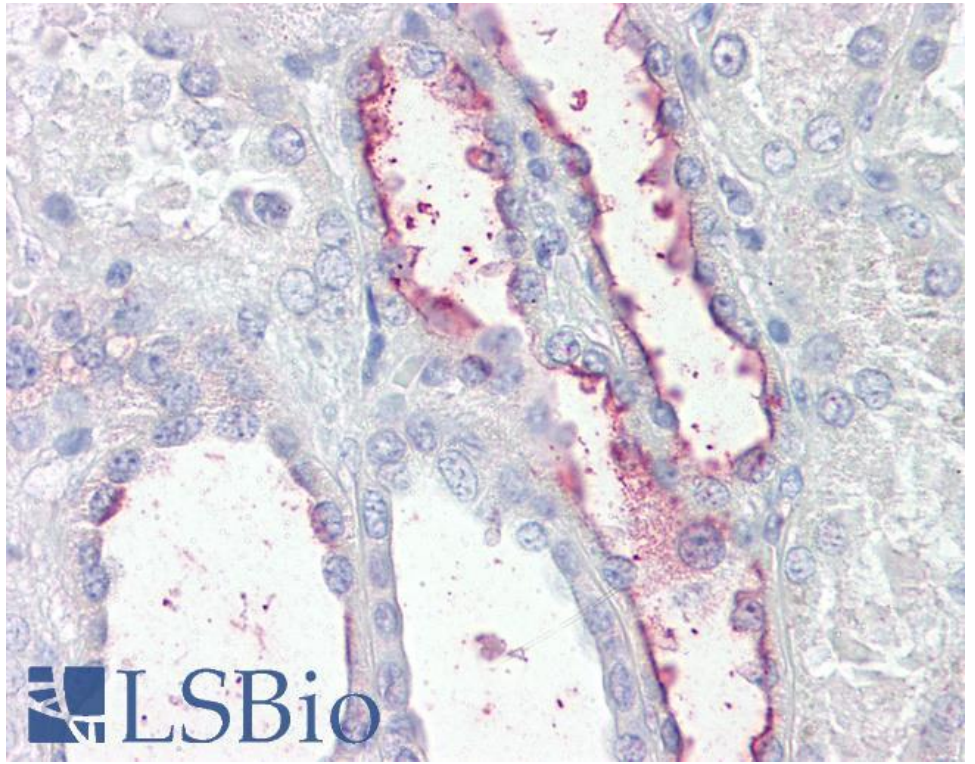
Western blot: Preliminary experiments in Human, Mouse and Rat Skeletal Muscle lysates gave no specific signal but low background (at antibody concentration up to 1µg/ml).

IHC: Paraffin embedded Human Kidney. Recommended concentration: 3.75µg/ml.

Species Reactivity

Tested: Human

Expected from sequence similarity: Human, Mouse, Rat, Dog, Cow, Pig



EB09766 (3.75µg/ml) staining of paraffin embedded Human Kidney. Steamed antigen retrieval with citrate buffer pH 6, AP-staining.