



## UK Office

### Everest Biotech Ltd

Cherwell Innovation Centre  
77 Heyford Park  
Upper Heyford  
Oxfordshire  
OX25 5HD  
UK

Enquiries:

[info@everestbiotech.com](mailto:info@everestbiotech.com)

Sales:

[sales@everestbiotech.com](mailto:sales@everestbiotech.com)

Tech support:

[support@everestbiotech.com](mailto:support@everestbiotech.com)

Tel: +44 (0)1869 238326

Fax: +44 (0)1869 238327

## US Office

### Everest Biotech c/o Abcore

405 Maple Street, Suite A106  
Ramona,  
CA 92065  
USA

Inquiries:

[info@everestbiotech.com](mailto:info@everestbiotech.com)

Sales:

[usasales@everestbiotech.com](mailto:usasales@everestbiotech.com)

Tech support:

[support@everestbiotech.com](mailto:support@everestbiotech.com)

Tel: 888-320-4628 (toll-free)

Fax: 888-841-9041

[www.everestbiotech.com](http://www.everestbiotech.com)

**Research Use Only. Not for  
diagnostic or therapeutic use.**

## EB09130 - Goat Anti-KCNJ1 / ROMK Antibody

Size: 100µg specific antibody in 200µl



### Target Protein

**Principal Names:** KCNJ1, potassium inwardly-rectifying channel, subfamily J, member 1, KIR1.1, ROMK, ROMK1, ATP-regulated potassium channel ROM-K, ATP-sensitive inward rectifier potassium channel 1, OTTHUMP00000045938, inwardly rectifying K+ channel, potassium inwardly-rectifying channel J1

**Official Symbol:** KCNJ1

**Accession Number(s):** NP\_000211.1; NP\_722448.1

**Human GeneID(s):** [3758](#)

**Non-Human GeneID(s):** 56379 (mouse), 24521 (rat)

**Important Comments:** This antibody is expected to recognize reported isoforms NP\_722449.2 and NP\_000211. The following reported variants represent identical protein: NP\_722451.1, NP\_722449.2, NP\_722450.1, NP\_722448.1.

### Immunogen

Peptide with sequence C-DQININFVVDAGNEN, from the internal region of the protein sequence according to NP\_000211.1; NP\_722448.1.

Please note the [peptide](#) is available for sale.

### Purification and Storage

Purified from goat serum by ammonium sulphate precipitation followed by antigen affinity chromatography using the immunizing peptide.

Supplied at 0.5 mg/ml in Tris saline, 0.02% sodium azide, pH7.3 with 0.5% bovine serum albumin.

Aliquot and store at -20°C. Minimize freezing and thawing.

### Applications Tested

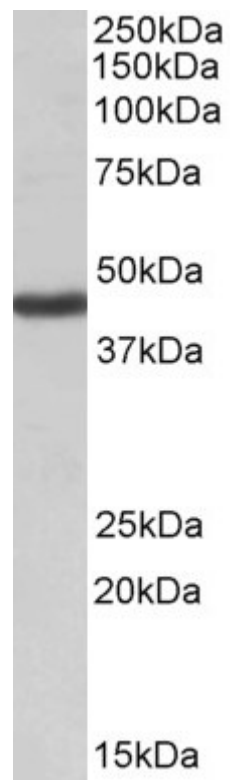
**Peptide ELISA:** antibody detection limit dilution 1:8000.

**Western blot:** Approx. 45kDa band observed in Human Kidney lysates (calculated MW of 44.8kDa according to NP\_000211.1). Recommended concentration: 1-3µg/ml.

### Species Reactivity

**Tested:** Human

**Expected from sequence similarity:** Human



EB09130 (1µg/ml) staining of Human Kidney lysate (35µg protein in RIPA buffer). Primary incubation was 1 hour.  
Detected by chemiluminescence.