



UK Office

Everest Biotech Ltd

Cherwell Innovation Centre
77 Heyford Park
Upper Heyford
Oxfordshire
OX25 5HD
UK

Enquiries:

info@everestbiotech.com

Sales:

sales@everestbiotech.com

Tech support:

support@everestbiotech.com

Tel: +44 (0)1869 238326

Fax: +44 (0)1869 238327

US Office

Everest Biotech c/o Abcore

405 Maple Street, Suite A106
Ramona,
CA 92065
USA

Inquiries:

info@everestbiotech.com

Sales:

usasales@everestbiotech.com

Tech support:

support@everestbiotech.com

Tel: 888-320-4628 (toll-free)

Fax: 888-841-9041

www.everestbiotech.com

**Research Use Only. Not for
diagnostic or therapeutic use.**

EB07765 - Goat Anti-KCNJ11 / KATP / Antibody

Size: 100µg specific antibody in 200µl



Target Protein

Principal Names: KCNJ11, IKATP, potassium inwardly-rectifying channel, subfamily J, member 11, BIR, HHF2, KIR6.2, MGC133230, PHHI, TNDM3, ATP-sensitive inward rectifier potassium channel 11, beta-cell inward rectifier subunit, inwardly rectifying potassium channel KIR6.2, potassium inwardly-rectifying channel J11

Official Symbol: KCNJ11

Accession Number(s): NP_000516.3

Human GeneID(s): [3767](#)

Important Comments: This antibody is expected to recognise isoform 1 (NP_000516.3) only.

Immunogen

Peptide with sequence C-AEDPAKPRYRARQ, from the internal region (near the N Terminus) of the protein sequence according to NP_000516.3.

Please note the [peptide](#) is available for sale.

Purification and Storage

Purified from goat serum by ammonium sulphate precipitation followed by antigen affinity chromatography using the immunizing peptide.

Supplied at 0.5 mg/ml in Tris saline, 0.02% sodium azide, pH7.3 with 0.5% bovine serum albumin.

Aliquot and store at -20°C. Minimize freezing and thawing.

Applications Tested

Peptide ELISA: antibody detection limit dilution 1:32000.

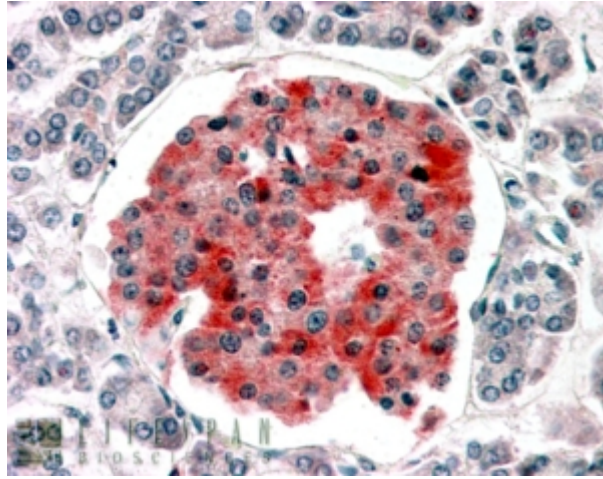
Western blot: Approx 45-48kDa band observed in Human Skeletal Muscle lysates (calculated MW of 43.5kDa according to NP_000516.3). Recommended concentration: 0.1-0.3µg/ml.

IHC: In paraffin embedded Human Pancreas shows variable staining across the islet of Langerhans. Recommended concentration, 3-5µg/ml.

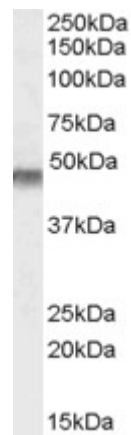
Species Reactivity

Tested: Human

Expected from sequence similarity: Human



EB07765 (3.8µg/ml) staining of paraffin embedded Human Pancreas. Steamed antigen retrieval with citrate buffer pH 6, AP-staining.



EB07765 (0.1µg/ml) staining of Human Muscle lysate (35µg protein in RIPA buffer). Primary incubation was 1 hour. Detected by chemiluminescence.