

UK Office

Everest Biotech Ltd

Cherwell Innovation Centre
77 Heyford Park
Upper Heyford
Oxfordshire
OX25 5HD
UK

Enquiries:

info@everestbiotech.com

Sales:

sales@everestbiotech.com

Tech support:

support@everestbiotech.com

Tel: +44 (0)1869 238326

www.everestbiotech.com

**Research Use Only. Not for
diagnostic or therapeutic use.**

EB07766 - Goat Anti-Kcnj11 / Kir6.2 Antibody

Size: 100µg specific antibody in 200µl



Target Protein

Principal Names: KCNJ11, Kir6.2, potassium inwardly-rectifying channel, subfamily J, member 11, mBIR, AI842722, AW491124, potassium inwardly rectifying channel, subfamily J, member 11, KATP, KATP channel

Official Symbol: Kcnj11

Accession Number(s): NP_034732.1

Human GeneID(s): [3767](#)

Non-Human GeneID(s): 16514 (mouse), 83535 (rat)

Immunogen

Peptide with sequence ERRARFVSKKGNC, from the internal region (near the N Terminus) of the protein sequence according to NP_034732.1.

Please note the [peptide](#) is available for sale.

Purification and Storage

Purified from goat serum by ammonium sulphate precipitation followed by antigen affinity chromatography using the immunizing peptide.

Supplied at 0.5 mg/ml in Tris saline, 0.02% sodium azide, pH7.3 with 0.5% bovine serum albumin.

Aliquot and store at -20°C. Minimize freezing and thawing.

Applications Tested

Peptide ELISA: antibody detection limit dilution 1:64000.

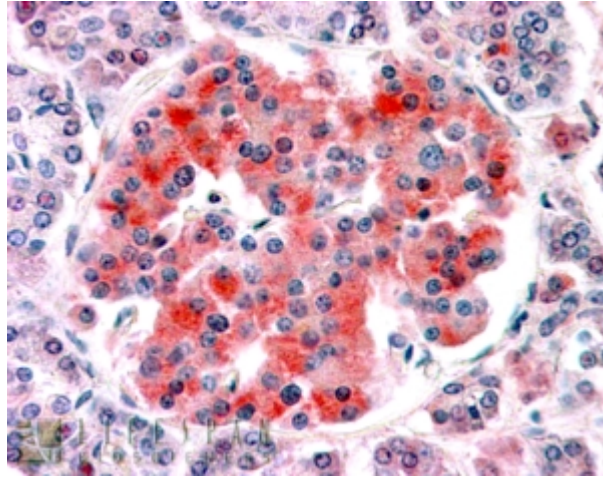
Western blot: Approx 45kDa band observed in Human Skeletal Muscle lysates (calculated MW of 43.6kDa according to NP_034732.1). Recommended concentration: 0.01-0.03µg/ml.

IHC: In paraffin embedded Human Pancreas shows variable staining across the islet of Langerhans. Recommended concentration, 3-5µg/ml.

Species Reactivity

Tested: Human

Expected from sequence similarity: Human, Mouse, Rat, Dog



EB07766 (3.8 μ g/ml) staining of paraffin embedded Human Pancreas. Steamed antigen retrieval with citrate buffer pH 6, AP-staining.



EB07766 (0.01 μ g/ml) staining of Human Muscle lysate (35 μ g protein in RIPA buffer). Primary incubation was 1 hour. Detected by chemiluminescence.