

## International Office

### Everest Biotech Ltd

Vector Laboratories, Inc.  
6737 Mowry Ave  
Newark, CA 94560  
United States

Customer Service:

[customerservice@vectorlabs.com](mailto:customerservice@vectorlabs.com)

Technical Service:

[technical@vectorlabs.com](mailto:technical@vectorlabs.com)

Tel: +1 (800) 227-6666

[www.everestbiotech.com](http://www.everestbiotech.com)

**Research Use Only. Not for  
diagnostic or therapeutic use.**

## EB09678 - Goat Anti-KCNN2 Antibody

Size: 100µg specific antibody in 200µl



### Target Protein

**Principal Names:** KCNN2, potassium intermediate/small conductance calcium-activated channel, subfamily N, member 2, KCa2.2, SK2, SKCA2, hSK2, apamin-sensitive small-conductance Ca<sup>2+</sup>-activated potassium channel, small conductance calcium-activated potassium channel protein 2

**Official Symbol:** KCNN2

**Accession Number(s):** NP\_067627.2; NP\_740721.1

**Human GeneID(s):** [3781](#)

**Non-Human GeneID(s):** 140492 (mouse), 54262 (rat)

**Important Comments:** This antibody is expected to recognize both isoforms (NP\_067627.2; NP\_740721.1).

### Immunogen

Peptide with sequence C-ESYDKHVTYNAER, from the internal region of the protein sequence according to NP\_067627.2; NP\_740721.1.

Please note the [peptide](#) is available for sale.

### Purification and Storage

Purified from goat serum by ammonium sulphate precipitation followed by antigen affinity chromatography using the immunizing peptide.

Supplied at 0.5 mg/ml in Tris saline, 0.02% sodium azide, pH7.3 with 0.5% bovine serum albumin.

Aliquot and store at -20°C. Minimize freezing and thawing.

### Applications Tested

**Peptide ELISA:** antibody detection limit dilution 1:64000.

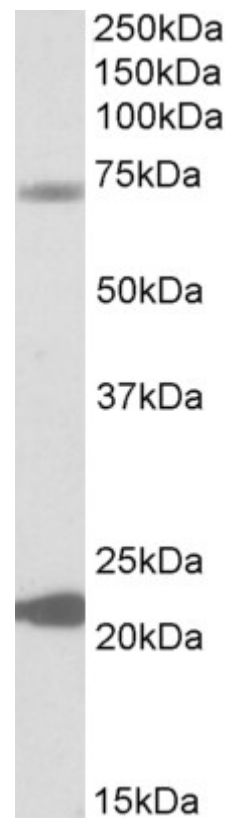
**Western blot:** Approx 70kDa and 23kDa bands observed in Human Liver lysates (calculated MW of 63.8kDa according to NP\_067627.2 and of 26.3kDa according to NP\_740721.1). Recommended concentration: 0.3-1µg/ml.

**IHC:** Paraffin embedded Human Thyroid Gland and Kidney. Recommended concentration: 3.75µg/ml.

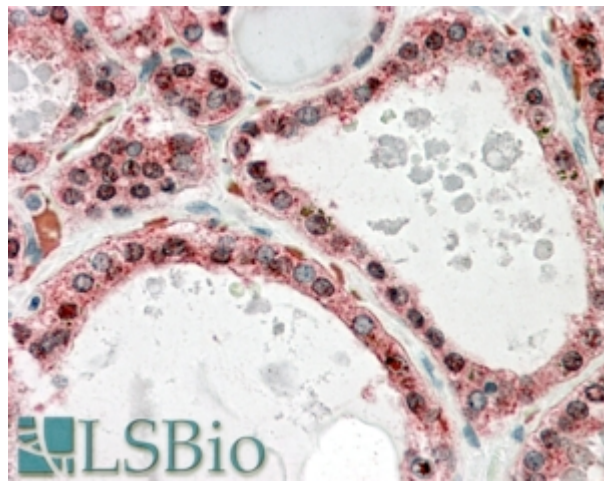
### Species Reactivity

**Tested:** Human

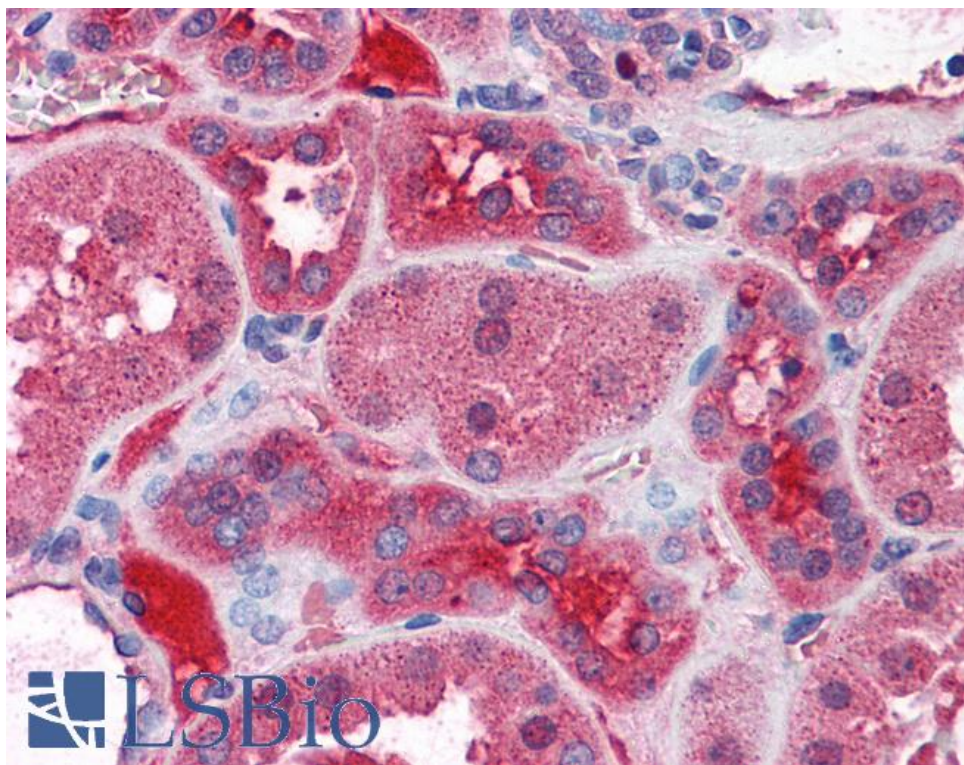
**Expected from sequence similarity:** Human, Mouse, Rat, Dog, Cow



EB09678 (0.3 $\mu$ g/ml) staining of Human Liver lysate (35 $\mu$ g protein in RIPA buffer). Primary incubation was 1 hour. Detected by chemiluminescence.



EB09678 (3.75 $\mu$ g/ml) staining of paraffin embedded Human Thyroid Gland. Steamed antigen retrieval with citrate buffer pH 6, AP-staining.



EB09678 (3.75µg/ml) staining of paraffin embedded Human Kidney. Steamed antigen retrieval with citrate buffer pH 6, AP-staining.