



## UK Office

### Everest Biotech Ltd

Cherwell Innovation Centre  
77 Heyford Park  
Upper Heyford  
Oxfordshire  
OX25 5HD  
UK

Enquiries:

[info@everestbiotech.com](mailto:info@everestbiotech.com)

Sales:

[sales@everestbiotech.com](mailto:sales@everestbiotech.com)

Tech support:

[support@everestbiotech.com](mailto:support@everestbiotech.com)

Tel: +44 (0)1869 238326

Fax: +44 (0)1869 238327

## US Office

### Everest Biotech c/o Abcore

405 Maple Street, Suite A106  
Ramona,  
CA 92065  
USA

Inquiries:

[info@everestbiotech.com](mailto:info@everestbiotech.com)

Sales:

[usasales@everestbiotech.com](mailto:usasales@everestbiotech.com)

Tech support:

[support@everestbiotech.com](mailto:support@everestbiotech.com)

Tel: 888-320-4628 (toll-free)

Fax: 888-841-9041

[www.everestbiotech.com](http://www.everestbiotech.com)

**Research Use Only. Not for  
diagnostic or therapeutic use.**

## EB09214 - Goat Anti-KCNQ1 Antibody

Size: 100µg specific antibody in 200µl



### Target Protein

**Principal Names:** KCNQ1, potassium voltage-gated channel, KQT-like subfamily, member 1, ATFB1, FLJ26167, JLNS1, KCNA8, KCNA9, KVLQT1, Kv1.9, Kv7.1, LQT, LQT1, RWS, SQT2, WRS, Jervell and Lange-Nielsen syndrome 1, kidney and cardiac voltage dependend K<sup>+</sup> channel, long (electrocardiographic) QT syndrome, Ward-Romano syndrome 1, slow delayed rectifier channel subunit

**Official Symbol:** KCNQ1

**Accession Number(s):** NP\_000209.2; NP\_861463.1

**Human GeneID(s):** [3784](#)

**Non-Human GeneID(s):** 16535 (mouse), 84020 (rat)

**Important Comments:** This antibody is expected to recognize both reported isoforms (NP\_000209.2; NP\_861463.1).

### Immunogen

Peptide with sequence C-EQLTVPRRGPD EGS, from the C Terminus of the protein sequence according to NP\_000209.2; NP\_861463.1.

Please note the [peptide](#) is available for sale.

### Purification and Storage

Purified from goat serum by ammonium sulphate precipitation followed by antigen affinity chromatography using the immunizing peptide.

Supplied at 0.5 mg/ml in Tris saline, 0.02% sodium azide, pH7.3 with 0.5% bovine serum albumin.

Aliquot and store at -20°C. Minimize freezing and thawing.

### Applications Tested

**Peptide ELISA:** antibody detection limit dilution 1:16000.

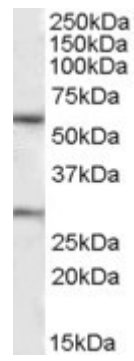
**Western blot:** Approx. 60kDa band observed in Human Heart lysates (calculated MW of 61.5kDa according to NP\_861463.1). Recommended concentration: 1-3µg/ml. An additional band of unknown identity was also consistently observed at 28kDa. This band was successfully blocked by incubation with the immunizing peptide. Primary incubation was 1 hour.

**IHC:** Paraffin embedded Rat Liver. Recommended concentration: 6-8µg/ml.

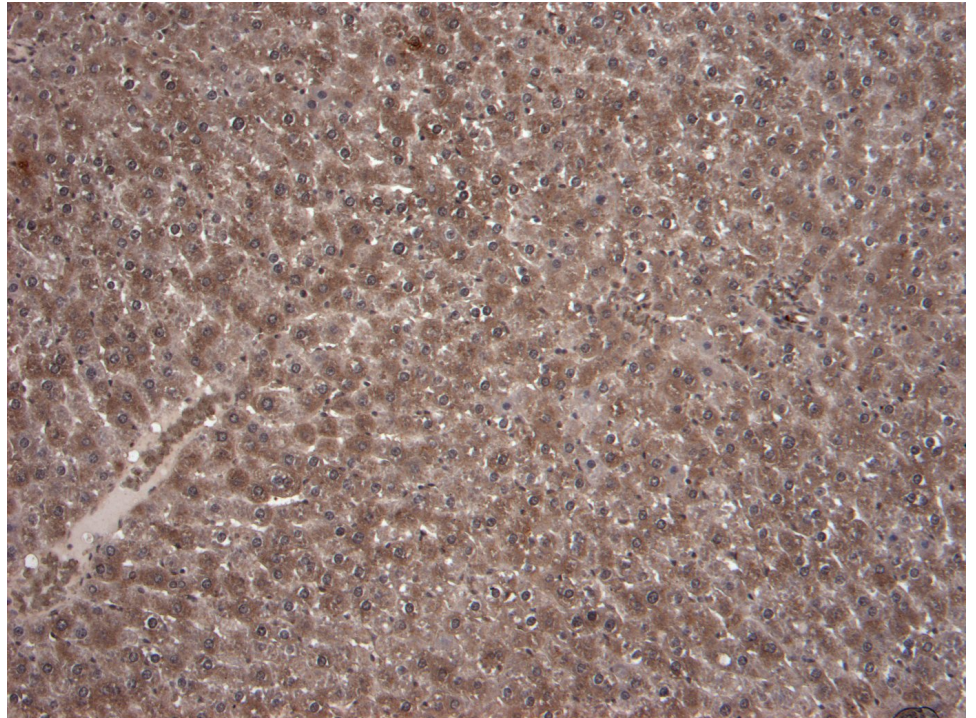
### Species Reactivity

**Tested:** Human, Rat

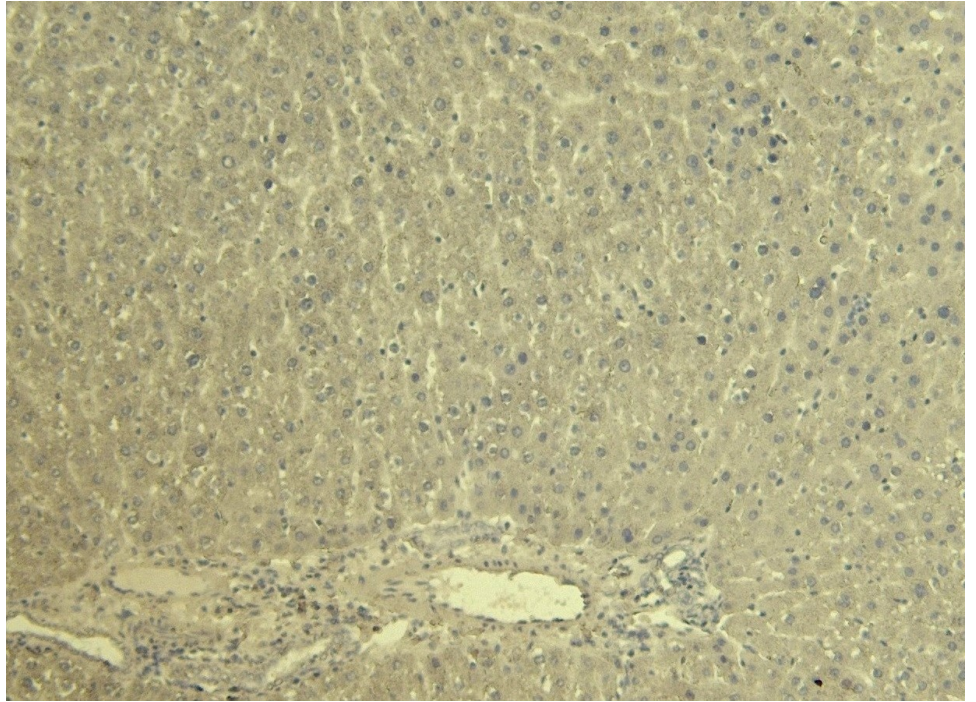
**Expected from sequence similarity:** Human, Mouse, Rat, Dog, Cow



EB09214 (1µg/ml) staining of Human Heart lysate (35µg protein in RIPA buffer). Detected by chemiluminescence.



EB09214 (8µg/ml) staining of paraffin embedded Rat Liver. Heat induced antigen retrieval with citrate buffer Ph 6, HRP-staining.



EB09214 Negative Control showing staining of paraffin embedded Rat Liver, with no primary antibody.