



## UK Office

### Everest Biotech Ltd

Cherwell Innovation Centre  
77 Heyford Park  
Upper Heyford  
Oxfordshire  
OX25 5HD  
UK

Enquiries:

[info@everestbiotech.com](mailto:info@everestbiotech.com)

Sales:

[sales@everestbiotech.com](mailto:sales@everestbiotech.com)

Tech support:

[support@everestbiotech.com](mailto:support@everestbiotech.com)

Tel: +44 (0)1869 238326

[www.everestbiotech.com](http://www.everestbiotech.com)

**Research Use Only. Not for  
diagnostic or therapeutic use.**

## EB10899 - Goat Anti-KDM2A (aa445-459) Antibody

Size: 100µg specific antibody in 200µl



### Target Protein

**Principal Names:** KDM2A, lysine (K)-specific demethylase 2A, CXXC8, DKFZp434M1735, FBL11, FBL7, FBXL11, FLJ00115, FLJ46431, KIAA1004, LILINA, SF-KDM2A, CXXC-type zinc finger protein 8, F-box and leucine-rich repeat protein 11, F-box protein FBL11, F-box protein FBL

**Official Symbol:** KDM2A

**Accession Number(s):** NP\_036440.1

**Human GeneID(s):** [22992](#)

### Immunogen

Peptide with sequence C-PRKDRQVHLTHFELE, from the internal region of the protein sequence according to NP\_036440.1.

Please note the [peptide](#) is available for sale.

### Purification and Storage

Purified from goat serum by ammonium sulphate precipitation followed by antigen affinity chromatography using the immunizing peptide.

Supplied at 0.5 mg/ml in Tris saline, 0.02% sodium azide, pH7.3 with 0.5% bovine serum albumin.

Aliquot and store at -20°C. Minimize freezing and thawing.

### Applications Tested

**Peptide ELISA:** antibody detection limit dilution 1:32000.

**Western blot:** Approx 140kDa band observed in Human Uterus lysates (calculated MW of 133kDa according to NP\_036440.1). Recommended concentration: 0.5-2µg/ml.

**IHC:** Paraffin embedded Human Small Intestine. Recommended concentration: 5µg/ml.

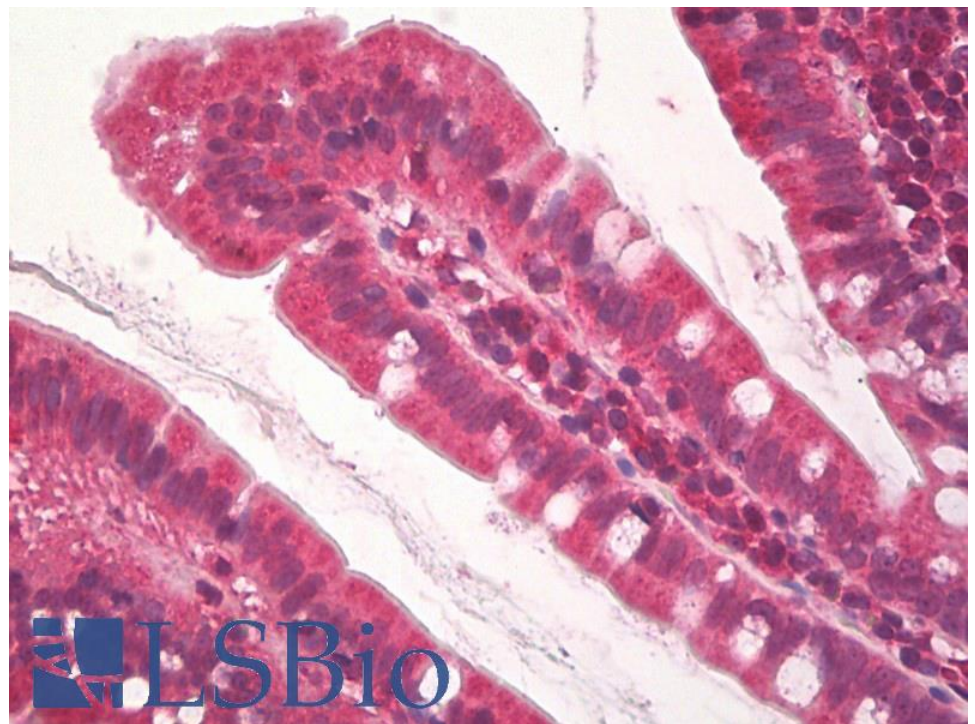
### Species Reactivity

**Tested:** Human

**Expected from sequence similarity:** Human, Mouse, Rat, Dog, Pig, Cow



EB10899 (0.5 $\mu$ g/ml) staining of Human Uterus lysate (35 $\mu$ g protein in RIPA buffer). Primary incubation was 1 hour. Detected by chemiluminescence.



EB10899 (5 $\mu$ g/ml) staining of paraffin embedded Human Small Intestine. Steamed antigen retrieval with citrate buffer pH 6, AP-staining.