



UK Office

Everest Biotech Ltd

Cherwell Innovation Centre
77 Heyford Park
Upper Heyford
Oxfordshire
OX25 5HD
UK

Enquiries:

info@everestbiotech.com

Sales:

sales@everestbiotech.com

Tech support:

support@everestbiotech.com

Tel: +44 (0)1869 238326

Fax: +44 (0)1869 238327

US Office

Everest Biotech c/o Abcore

405 Maple Street, Suite A106
Ramona,
CA 92065
USA

Inquiries:

info@everestbiotech.com

Sales:

usasales@everestbiotech.com

Tech support:

support@everestbiotech.com

Tel: 888-320-4628 (toll-free)

Fax: 888-841-9041

www.everestbiotech.com

**Research Use Only. Not for
diagnostic or therapeutic use.**

EB10899 - Goat Anti-KDM2A (aa445-459) Antibody

Size: 100µg specific antibody in 200µl



Target Protein

Principal Names: KDM2A, lysine (K)-specific demethylase 2A, CXXC8, DKFZp434M1735, FBL11, FBL7, FBXL11, FLJ00115, FLJ46431, KIAA1004, LILINA, SF-KDM2A, CXXC-type zinc finger protein 8, F-box and leucine-rich repeat protein 11, F-box protein FBL11, F-box protein FBL

Official Symbol: KDM2A

Accession Number(s): NP_036440.1

Human GeneID(s): [22992](#)

Immunogen

Peptide with sequence C-PRKDRQVHLTHFELE, from the internal region of the protein sequence according to NP_036440.1.

Please note the [peptide](#) is available for sale.

Purification and Storage

Purified from goat serum by ammonium sulphate precipitation followed by antigen affinity chromatography using the immunizing peptide.

Supplied at 0.5 mg/ml in Tris saline, 0.02% sodium azide, pH7.3 with 0.5% bovine serum albumin.

Aliquot and store at -20°C. Minimize freezing and thawing.

Applications Tested

Peptide ELISA: antibody detection limit dilution 1:32000.

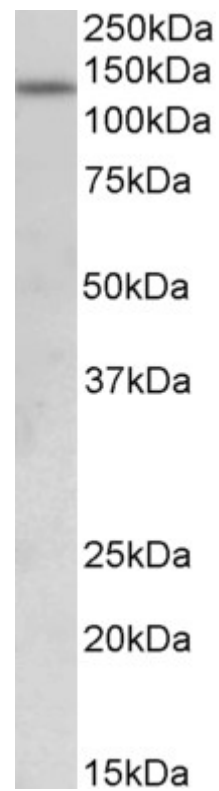
Western blot: Approx 140kDa band observed in Human Uterus lysates (calculated MW of 133kDa according to NP_036440.1). Recommended concentration: 0.5-2µg/ml.

IHC: Paraffin embedded Human Small Intestine. Recommended concentration: 5µg/ml.

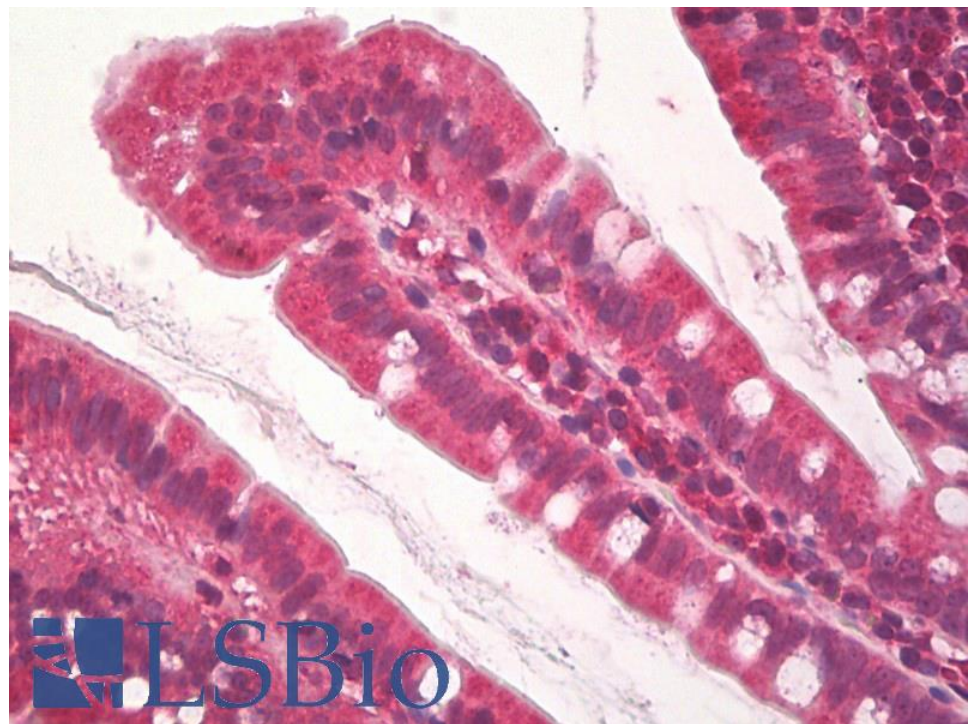
Species Reactivity

Tested: Human

Expected from sequence similarity: Human, Mouse, Rat, Dog, Pig, Cow



EB10899 (0.5 μ g/ml) staining of Human Uterus lysate (35 μ g protein in RIPA buffer). Primary incubation was 1 hour. Detected by chemiluminescence.



EB10899 (5 μ g/ml) staining of paraffin embedded Human Small Intestine. Steamed antigen retrieval with citrate buffer pH 6, AP-staining.