



International Office

Everest Biotech Ltd

Vector Laboratories, Inc.
6737 Mowry Ave
Newark, CA 94560
United States

Customer Service:

customerservice@vectorlabs.com

Technical Service:

technical@vectorlabs.com

Tel: +1 (800) 227-6666

www.everestbiotech.com

**Research Use Only. Not for
diagnostic or therapeutic use.**

EB12358 - Goat Anti-keratin 18 Antibody

Size: 100µg specific antibody in 200µl



Target Protein

Principal Names: KRT18, keratin 18, CYK18, K18, CK-18, cell proliferation-inducing gene 46 protein, cell proliferation-inducing protein 46, cytokeratin 18, cytokeratin-18, keratin, type I cytoskeletal 18, keratin-18

Official Symbol: KRT18

Accession Number(s): NP_000215.1

Human GeneID(s): [3875](#)

Non-Human GeneID(s): 16668 (mouse), 294853 (rat)

Important Comments: Reported variants represent identical protein: NP_000215.1, NP_954657.1.

Immunogen

Peptide with sequence C-EELDKYWSQQIE, from the internal region of the protein sequence according to NP_000215.1.

Please note the [peptide](#) is available for sale.

Purification and Storage

Purified from goat serum by ammonium sulphate precipitation followed by antigen affinity chromatography using the immunizing peptide.

Supplied at 0.5 mg/ml in Tris saline, 0.02% sodium azide, pH7.3 with 0.5% bovine serum albumin.

Aliquot and store at -20°C. Minimize freezing and thawing.

Applications Tested

Peptide ELISA: antibody detection limit dilution 1:32000.

Western blot: Approx 48kDa band observed in lysates of cell lines A431, HeLa, MCF7 (calculated MW of 48.1kDa according to NP_000215.1) and approx 45kDa in lysates of Pig Liver (calculated MW of 47.4kDa according to XP_005652636.2). Recommended concentration: 0.1-0.3µg/ml.

IHC: Paraffin embedded Human Breast, Placenta and Small Intestine. Recommended concentration: 5µg/ml.

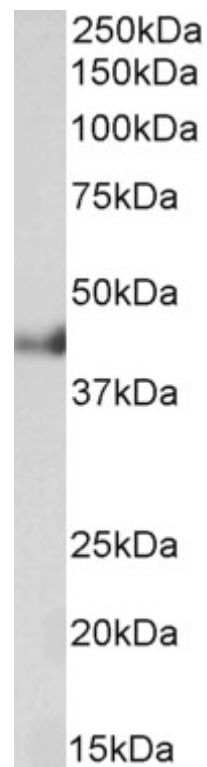
Species Reactivity

Tested: Human, Pig

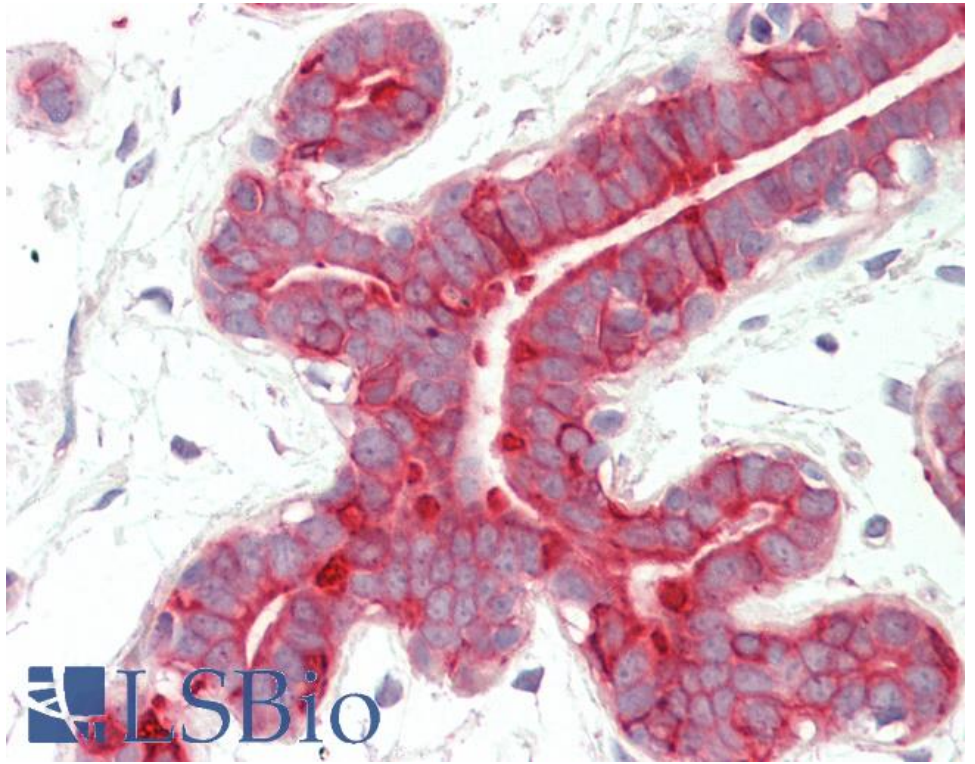
Expected from sequence similarity: Human, Mouse, Rat, Dog, Pig, Cow



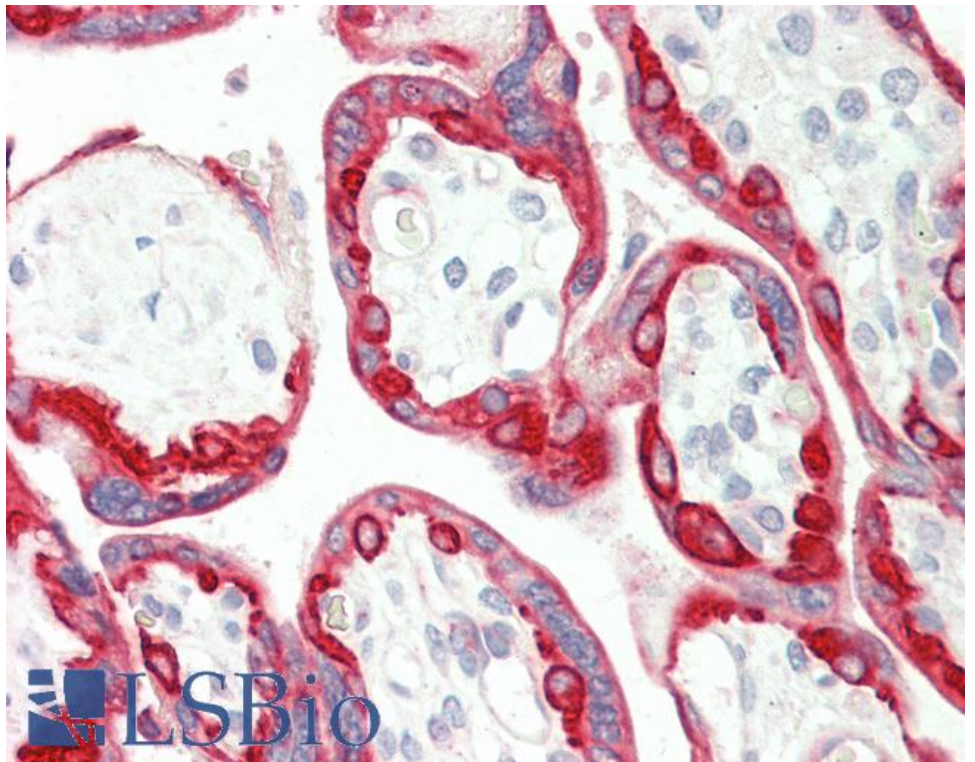
EB12358 (0.1 μ g/ml) staining of HeLa lysate (35 μ g protein in RIPA buffer). Primary incubation was 1 hour.
Detected by chemiluminescence.



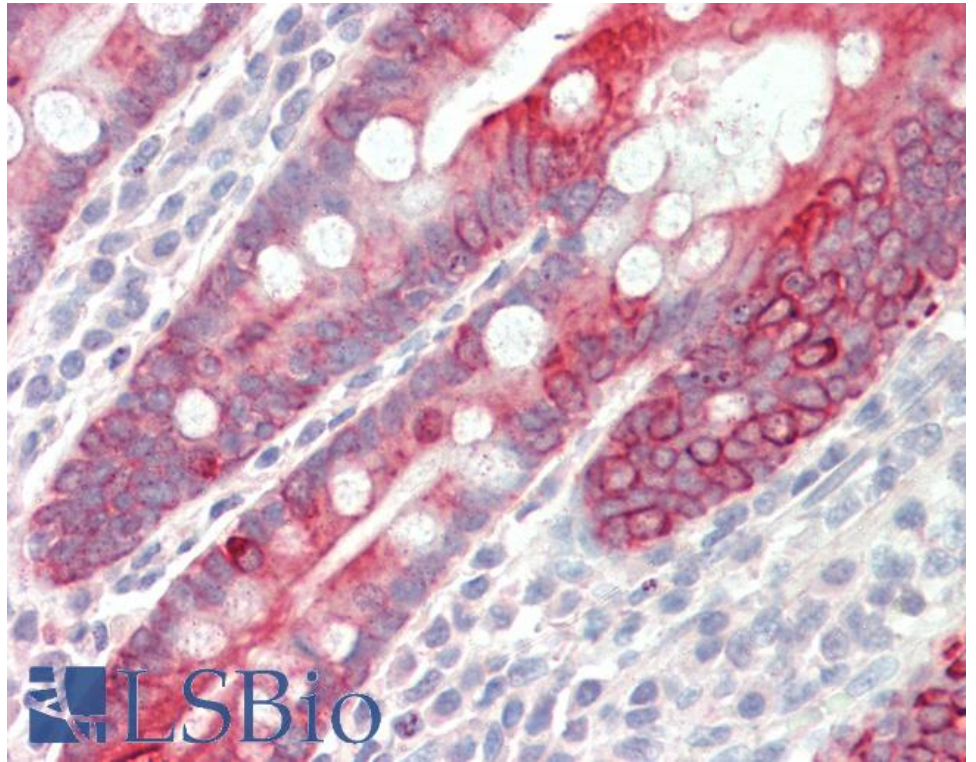
EB12358 (0.1 μ g/ml) staining of Pig Liver lysate (35 μ g protein in RIPA buffer). Primary incubation was 1 hour.
Detected by chemiluminescence



EB12358 (5µg/ml) staining of paraffin embedded Human Breast. Steamed antigen retrieval with citrate buffer pH 6, AP-staining.



EB12358 (5µg/ml) staining of paraffin embedded Human Placenta. Steamed antigen retrieval with citrate buffer Ph 6, AP-staining.



EB12358 (5µg/ml) staining of paraffin embedded Human Small Intestine. Steamed antigen retrieval with citrate buffer pH 6, AP-staining.