



International Office

Everest Biotech Ltd

Vector Laboratories, Inc.
6737 Mowry Ave
Newark, CA 94560
United States

Customer Service:

customerservice@vectorlabs.com

Technical Service:

technical@vectorlabs.com

Tel: +1 (800) 227-6666

www.everestbiotech.com

**Research Use Only. Not for
diagnostic or therapeutic use.**

EB12963 - Goat Anti-Ketohexokinase Antibody

Size: 100µg specific antibody in 200µl



Target Protein

Principal Names: KHK, ketohexokinase (fructokinase), hepatic fructokinase, ketohexokinase

Official Symbol: KHK

Accession Number(s): NP_000212.1; NP_006479.1

Human GeneID(s): [3795](#)

Non-Human GeneID(s): 16548 (mouse), 25659 (rat)

Important Comments: This antibody is expected to recognize both reported isoforms (NP_000212.1; NP_006479.1).

Immunogen

Peptide with sequence RCLSQRWQRGGNASN, from the internal region of the protein sequence according to NP_000212.1; NP_006479.1.

Please note the [peptide](#) is available for sale.

Purification and Storage

Purified from goat serum by ammonium sulphate precipitation followed by antigen affinity chromatography using the immunizing peptide.

Supplied at 0.5 mg/ml in Tris saline, 0.02% sodium azide, pH7.3 with 0.5% bovine serum albumin.

Aliquot and store at -20°C. Minimize freezing and thawing.

Applications Tested

Peptide ELISA: antibody detection limit dilution 1:128000.

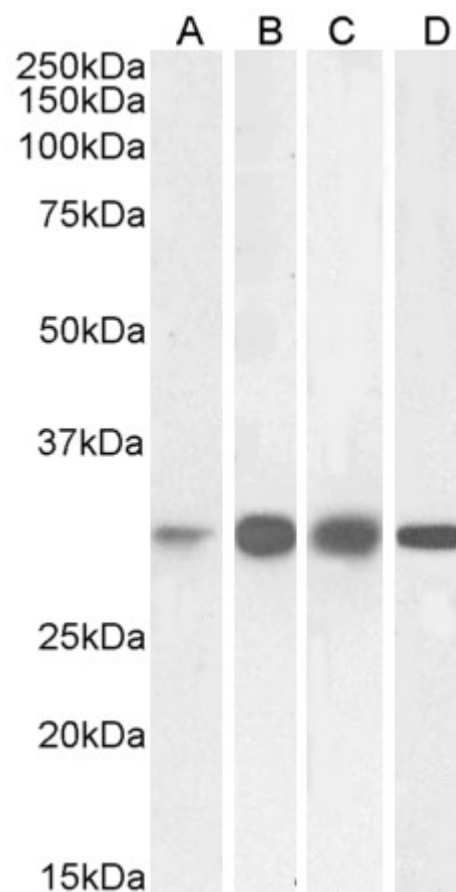
Western blot: Approx 30kDa band observed in Human, Mouse, Rat and Pig Liver lysates (calculated MW of 32.7kDa according to Human NP_000212.1, Mouse NP_032465.2, Rat NP_114061.1 and of 32.6kDa according to Pig XP_003125348.1). Recommended concentration: 0.01-0.03µg/ml. Primary incubation was 1 hour.

IHC: Paraffin embedded Human Kidney. Recommended concentration: 5µg/ml.

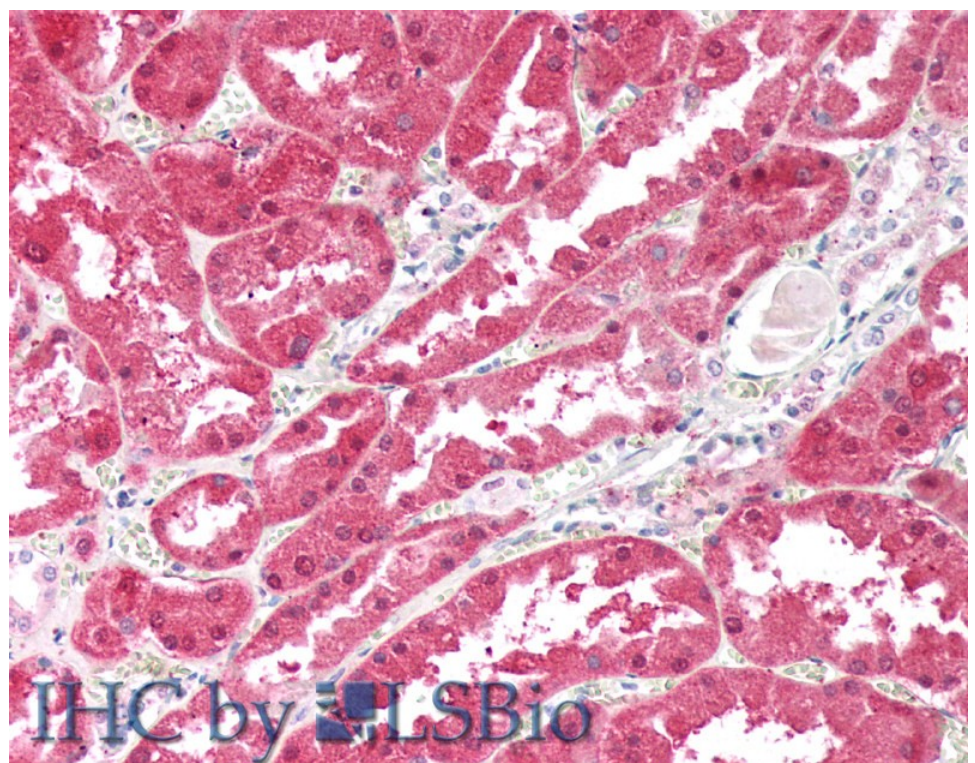
Species Reactivity

Tested: Human, Mouse, Rat, Pig

Expected from sequence similarity: Human, Mouse, Rat, Dog, Pig, Cow



EB12963 (0.03 μ g/ml) staining of Human (A), Mouse (B), Rat (C) and Pig (D) Liver lysates (35 μ g protein in RIPA buffer). Detected by chemiluminescence.



EB12963 (5 μ g/ml) staining of paraffin embedded Human Kidney. Steamed antigen retrieval with citrate buffer pH 6, AP-staining.