



## International Office

### Everest Biotech Ltd

Vector Laboratories, Inc.  
6737 Mowry Ave  
Newark, CA 94560  
United States

Customer Service:

[customerservice@vectorlabs.com](mailto:customerservice@vectorlabs.com)

Technical Service:

[technical@vectorlabs.com](mailto:technical@vectorlabs.com)

Tel: +1 (800) 227-6666

[www.everestbiotech.com](http://www.everestbiotech.com)

**Research Use Only. Not for  
diagnostic or therapeutic use.**

## EB05492-B - Goat Anti-Kinesin 1 / UKHC, Biotinylated Antibody

Size: 100µg specific antibody in 200µl



### Target Protein

**Principal Names:** KIF5B, kinesin family member 5B, HEL-S-61, KINH, KNS, KNS1, UKHC, conventional kinesin heavy chain, epididymis secretory protein Li 61, kinesin 1 (110-120kD), kinesin heavy chain, ubiquitous kinesin heavy chain

**Official Symbol:** KIF5B

**Accession Number(s):** NP\_004512.1

**Human GeneID(s):** [3799](#)

**Non-Human GeneID(s):** 16573 (mouse), 117550 (rat)

### Immunogen

Peptide with sequence CQPVAVRGGGGKQV., from the C Terminus of the protein sequence according to NP\_004512.1.

Please note the [peptide](#) is available for sale.

### Purification and Storage

Purified from goat serum by ammonium sulphate precipitation followed by antigen affinity chromatography using the immunizing peptide.

Supplied at 0.5 mg/ml in Tris saline, 0.02% sodium azide, pH7.3 with 0.5% bovine serum albumin.

Aliquot and store at -20°C. Minimize freezing and thawing.

### Applications Tested

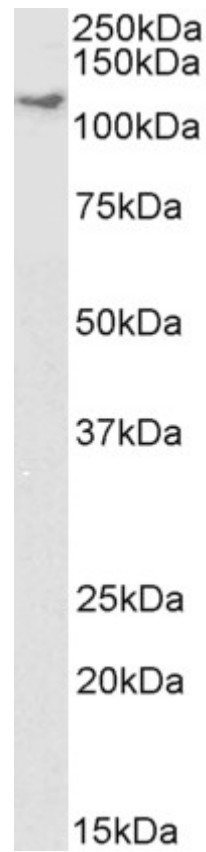
**Peptide ELISA:** antibody detection limit dilution 1:8000.

**Western blot:** Approx 120kDa band observed in lysates of cell line HeLa (calculated MW of 110kDa according to NP\_004512.1). See non-biotinylated parental product's datasheet for further QC data. Recommended concentration: 1-3µg/ml.

### Species Reactivity

**Tested:** Human, Dog

**Expected from sequence similarity:** Human, Mouse, Rat, Dog, Cow



Biotinylated EB05492 (1 µg/ml) staining of HeLa lysate (35 µg protein in RIPA buffer), exactly mirroring its parental non-biotinylated product. Primary incubation was 1 hour. Detected by chemiluminescence, using streptavidin-HRP and using NAP blocker as a substitute for skimmed milk.