

## International Office

### Everest Biotech Ltd

Vector Laboratories, Inc.  
6737 Mowry Ave  
Newark, CA 94560  
United States

Customer Service:

[customerservice@vectorlabs.com](mailto:customerservice@vectorlabs.com)

Technical Service:

[technical@vectorlabs.com](mailto:technical@vectorlabs.com)

Tel: +1 (800) 227-6666

[www.everestbiotech.com](http://www.everestbiotech.com)

**Research Use Only. Not for  
diagnostic or therapeutic use.**

## EB11301 - Goat Anti-KLF13 (aa45-58) Antibody

Size: 100µg specific antibody in 200µl



### Target Protein

**Principal Names:** basic transcription element binding protein 3, basic transcription element-binding protein 3, BTEB3, BTE-binding protein 3, FKLF2, Krueppel-like factor 13, Kruppel-like factor 13, novel Sp1-like zinc finger transcription factor 1, NSLP1, RANTES factor of late activated T lymphocytes-1, RANTES factor of late activated T-lymphocytes 1, RFLAT1, RFLAT-1, Sp1 like zinc finger transcription factor, transcription factor BTEB3, transcription factor NSLP1, KLF13

**Official Symbol:** KLF13

**Accession Number(s):** NP\_057079.2

**Human GeneID(s):** [51621](#)

**Non-Human GeneID(s):** 50793 (mouse)

### Immunogen

Peptide with sequence C-TLPRVEERRDGKDS, from the internal region of the protein sequence according to NP\_057079.2.

Please note the [peptide](#) is available for sale.

### Purification and Storage

Purified from goat serum by ammonium sulphate precipitation followed by antigen affinity chromatography using the immunizing peptide.

Supplied at 0.5 mg/ml in Tris saline, 0.02% sodium azide, pH7.3 with 0.5% bovine serum albumin.

Aliquot and store at -20°C. Minimize freezing and thawing.

### Applications Tested

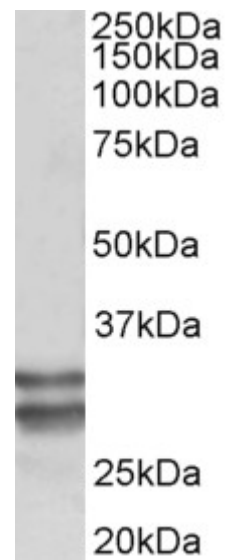
**Peptide ELISA:** antibody detection limit dilution 1:64000.

**Western blot:** Approx 30+28kDa bands observed in Human Heart lysates (calculated MW of 31.2kDa according to NP\_057079.2). Recommended concentration: 0.1-0.3µg/ml. The 28kDa is explained by partly proteolysis. Both bands were blocked by the immunizing peptide.

### Species Reactivity

**Tested:** Human

**Expected from sequence similarity:** Human. Mouse, Pig, Cow



EB11301 (0.1µg/ml) staining of Human Heart lysate (35µg protein in RIPA buffer). Primary incubation was 1 hour. Detected by chemiluminescence.