



International Office

Everest Biotech Ltd

Vector Laboratories, Inc.
6737 Mowry Ave
Newark, CA 94560
United States

Customer Service:

customerservice@vectorlabs.com

Technical Service:

technical@vectorlabs.com

Tel: +1 (800) 227-6666

www.everestbiotech.com

**Research Use Only. Not for
diagnostic or therapeutic use.**

EB13093 - Goat Anti-KLF2 (aa248-260) Antibody

Size: 100µg specific antibody in 200µl



Target Protein

Principal Names: KLF2, Kruppel-like factor 2 (lung), LKLF, Kruppel-like factor LKLF, lung Kruppel-like zinc finger transcription factor

Official Symbol: KLF2

Accession Number(s): NP_057354.1

Human GeneID(s): [10365](#)

Immunogen

Peptide with sequence SPLELLEAKPKRGC, from the C Terminus of the protein sequence according to NP_057354.1.

Please note the [peptide](#) is available for sale.

Purification and Storage

Purified from goat serum by ammonium sulphate precipitation followed by antigen affinity chromatography using the immunizing peptide.

Supplied at 0.5 mg/ml in Tris saline, 0.02% sodium azide, pH7.3 with 0.5% bovine serum albumin.

Aliquot and store at -20°C. Minimize freezing and thawing.

Applications Tested

Peptide ELISA: antibody detection limit dilution 1:64000.

Western blot: Approx 40kDa band observed in lysates of cell line U251 and in Human Cerebral Cortex lysates and in preliminary testing of Human Lung, Heart and Colon lysate (calculated MW of 37.4kDa according to Human), Recommended concentration: 0.03-0.3µg/ml. Primary incubation 1 hour at room temperature.

IHC: Paraffin embedded Human Colon and Kidney. Recommended concentration: 4-6µg/ml.

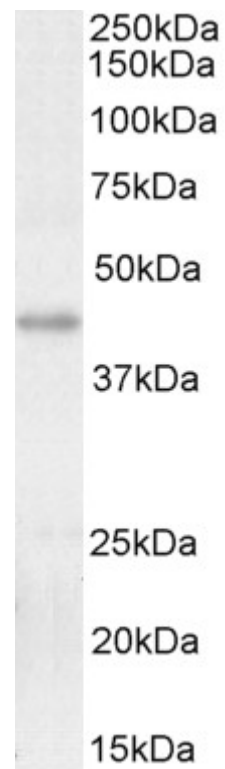
Species Reactivity

Tested: Human

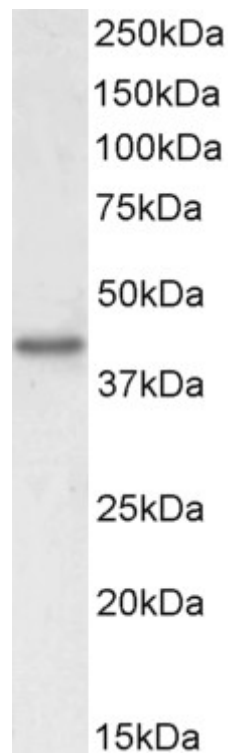
Expected from sequence similarity: Human

Specific Reference

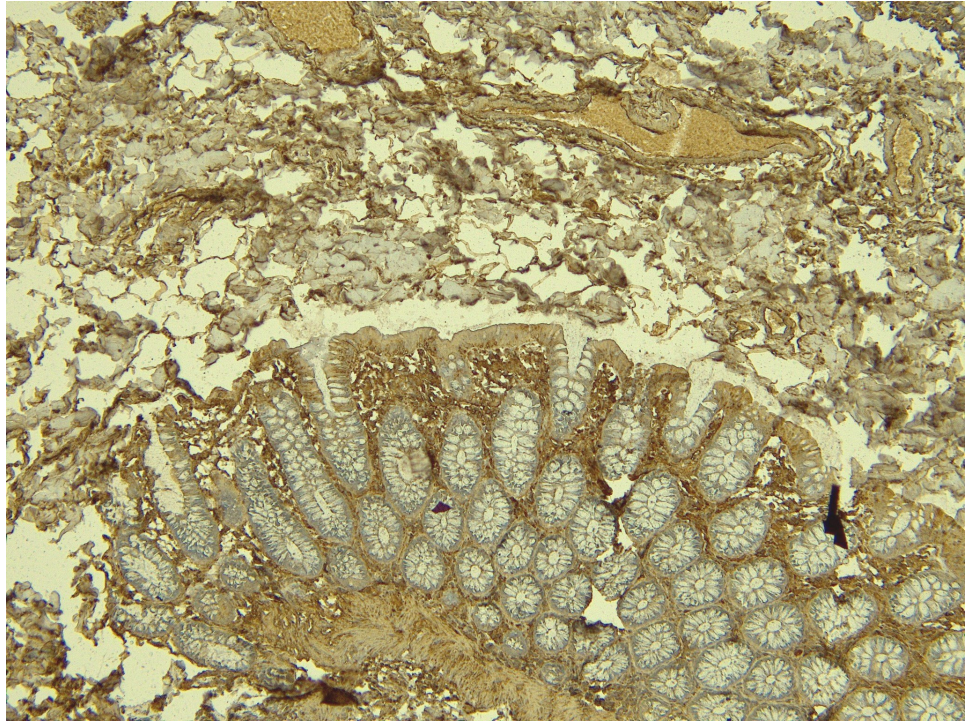
PMID: 0



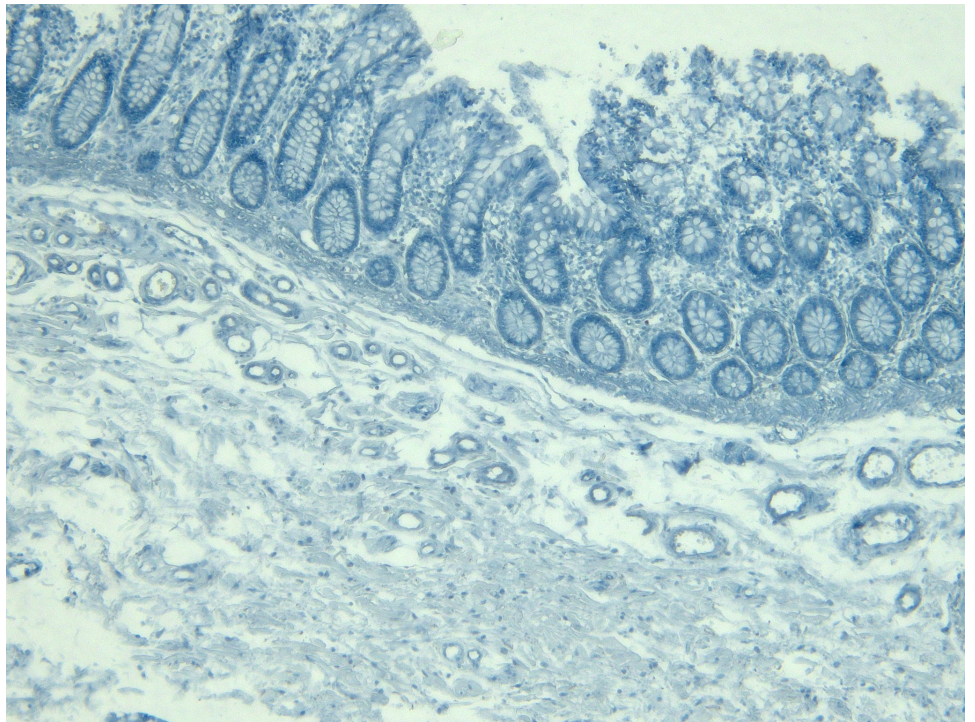
EB13093 (0.1 μ g/ml) staining of U251 cell lysate (35 μ g protein in RIPA buffer). Detected by chemiluminescence.



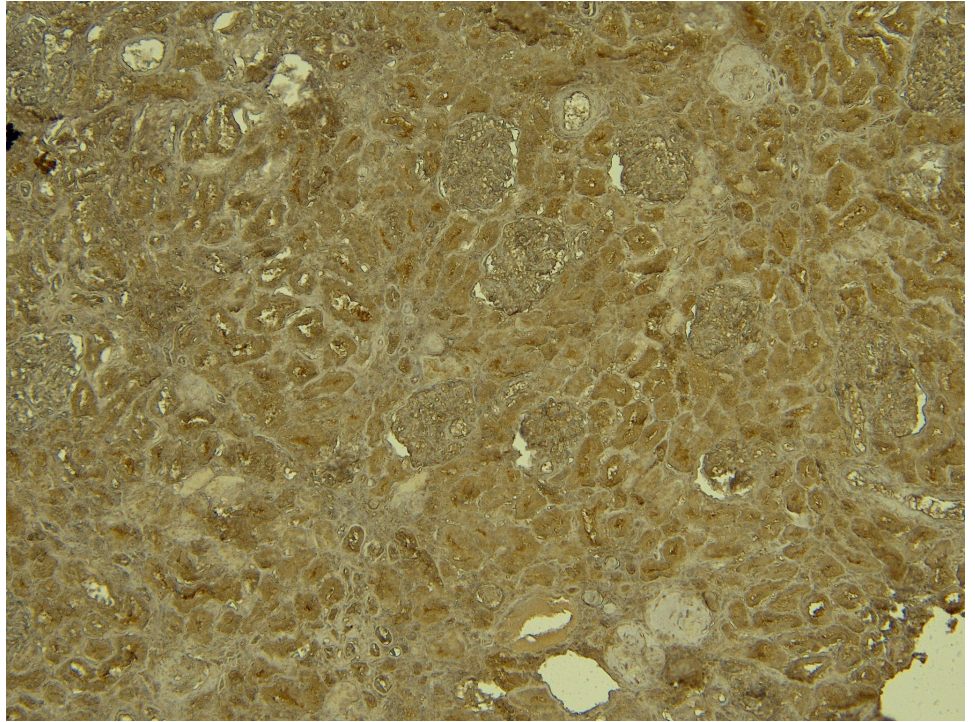
EB13093 (0.1 μ g/ml) staining of Human Cerebral Cortex lysate (35 μ g protein in RIPA buffer). Detected by chemiluminescence.



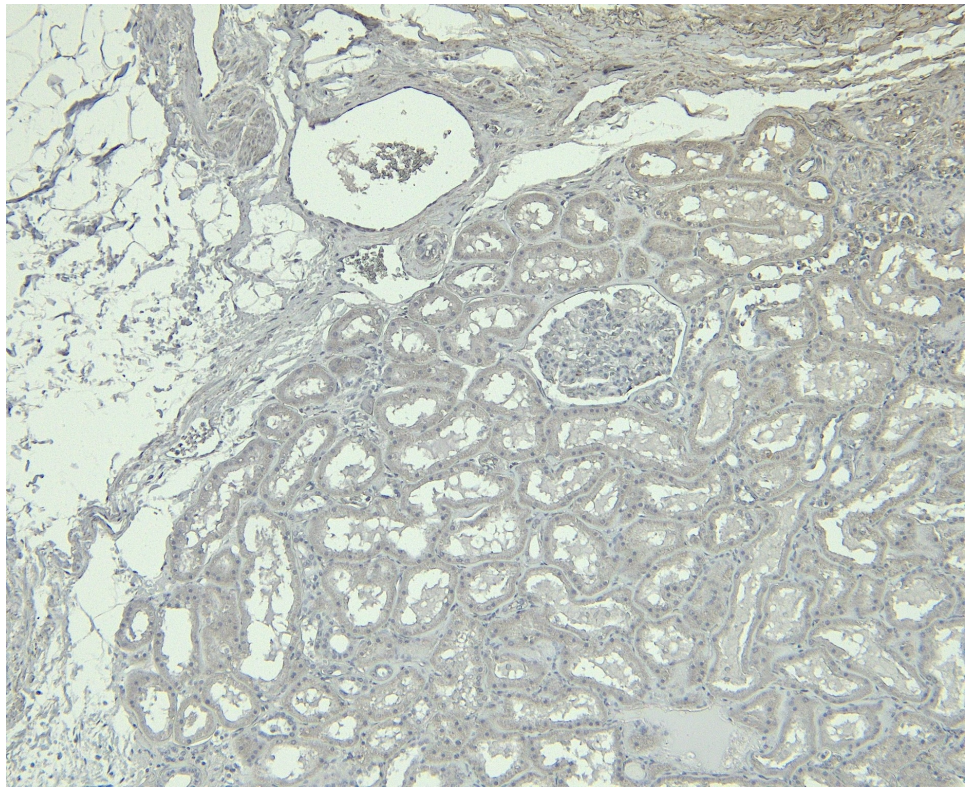
EB13093 (6 μ g/ml) staining of paraffin embedded Human Colon. Heat induced antigen retrieval with citrate buffer pH 6, HRP-staining.



EB13093 Negative Control showing staining of paraffin embedded Human Colon, with no primary antibody.



EB13093 (4 μ g/ml) staining of paraffin embedded Human Kidney. Heat induced antigen retrieval with citrate buffer pH 6, HRP-staining.



EB13093 Negative Control showing staining of paraffin embedded Human Kidney, with no primary antibody.