



## UK Office

### Everest Biotech Ltd

Cherwell Innovation Centre  
77 Heyford Park  
Upper Heyford  
Oxfordshire  
OX25 5HD  
UK

Enquiries:

[info@everestbiotech.com](mailto:info@everestbiotech.com)

Sales:

[sales@everestbiotech.com](mailto:sales@everestbiotech.com)

Tech support:

[support@everestbiotech.com](mailto:support@everestbiotech.com)

Tel: +44 (0)1869 238326

Fax: +44 (0)1869 238327

## US Office

### Everest Biotech c/o Abcore

405 Maple Street, Suite A106  
Ramona,  
CA 92065  
USA

Inquiries:

[info@everestbiotech.com](mailto:info@everestbiotech.com)

Sales:

[usasales@everestbiotech.com](mailto:usasales@everestbiotech.com)

Tech support:

[support@everestbiotech.com](mailto:support@everestbiotech.com)

Tel: 888-320-4628 (toll-free)

Fax: 888-841-9041

[www.everestbiotech.com](http://www.everestbiotech.com)

**Research Use Only. Not for  
diagnostic or therapeutic use.**

## EB13093 - Goat Anti-KLF2 (aa248-260) Antibody

Size: 100µg specific antibody in 200µl



### Target Protein

**Principal Names:** KLF2, Kruppel-like factor 2 (lung), LKLF, Kruppel-like factor LKLF, lung Kruppel-like zinc finger transcription factor

**Official Symbol:** KLF2

**Accession Number(s):** NP\_057354.1

**Human GeneID(s):** [10365](#)

### Immunogen

Peptide with sequence SPLELLEAKPKRGC, from the C Terminus of the protein sequence according to NP\_057354.1.

Please note the [peptide](#) is available for sale.

### Purification and Storage

Purified from goat serum by ammonium sulphate precipitation followed by antigen affinity chromatography using the immunizing peptide.

Supplied at 0.5 mg/ml in Tris saline, 0.02% sodium azide, pH7.3 with 0.5% bovine serum albumin.

Aliquot and store at -20°C. Minimize freezing and thawing.

### Applications Tested

**Peptide ELISA:** antibody detection limit dilution 1:64000.

**Western blot:** Approx 40kDa band observed in lysates of cell line U251 and in Human Cerebral Cortex lysates and in preliminary testing of Human Lung, Heart and Colon lysate (calculated MW of 37.4kDa according to Human), Recommended concentration: 0.03-0.3µg/ml. Primary incubation 1 hour at room temperature.

**IHC:** Paraffin embedded Human Colon and Kidney. Recommended concentration: 4-6µg/ml.

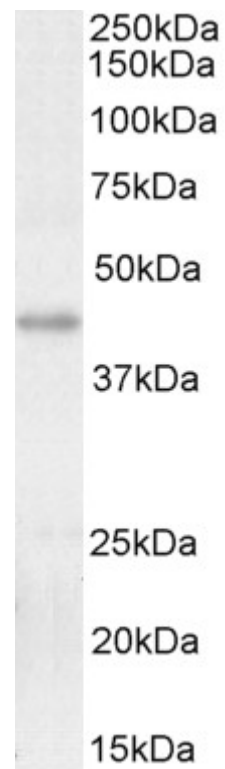
### Species Reactivity

**Tested:** Human

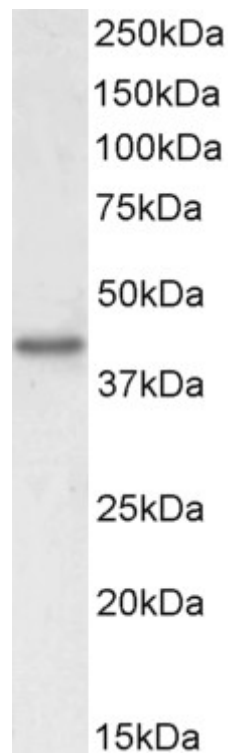
**Expected from sequence similarity:** Human

### Specific Reference

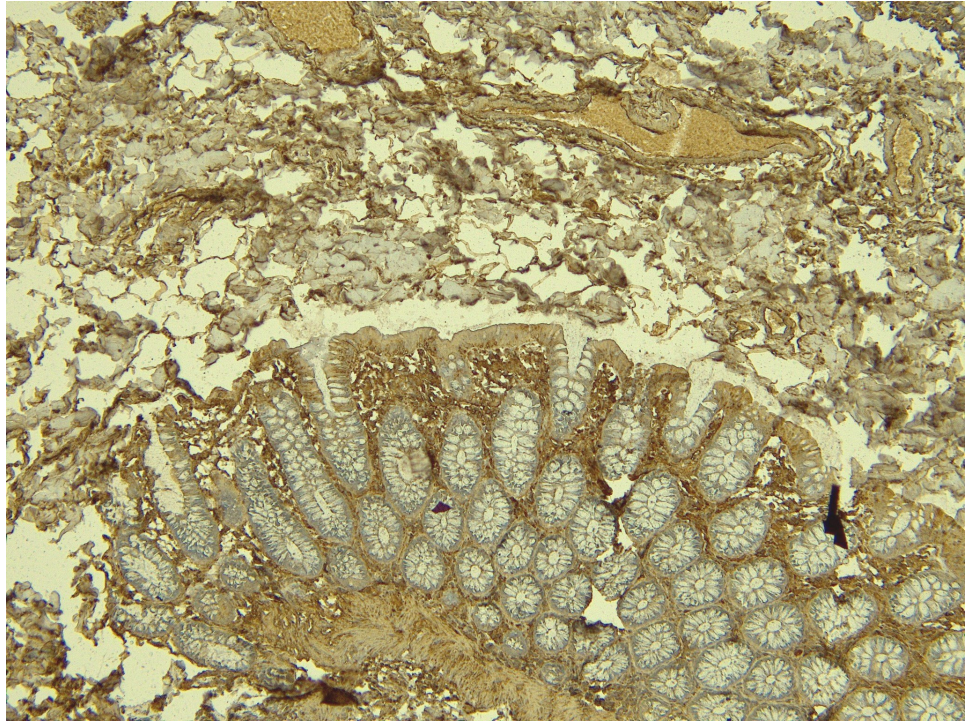
PMID: 0



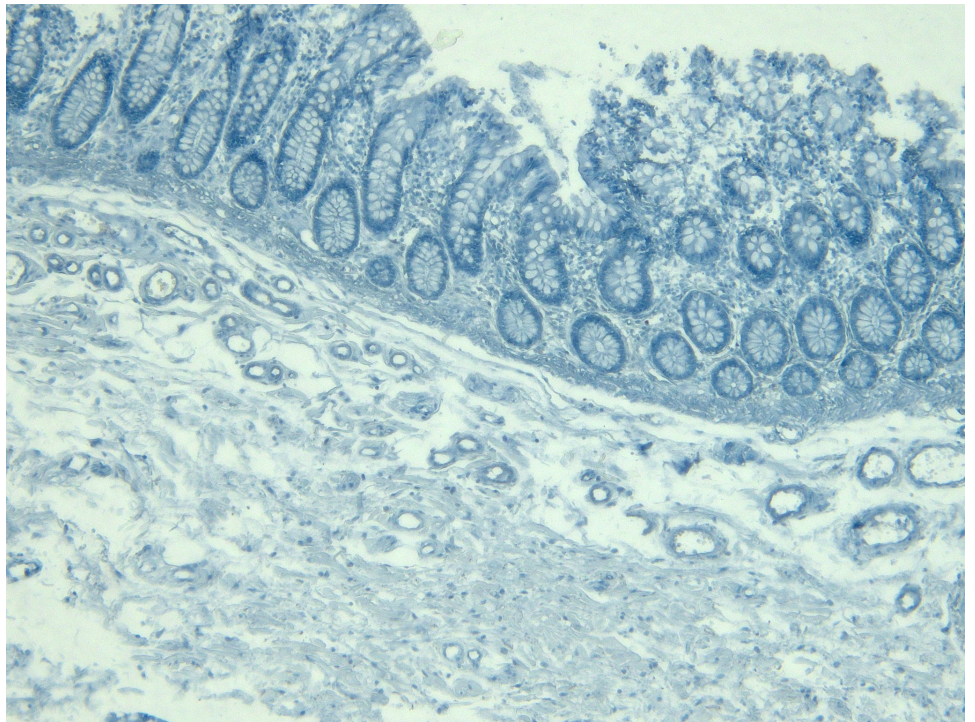
EB13093 (0.1µg/ml) staining of U251 cell lysate (35µg protein in RIPA buffer). Detected by chemiluminescence.



EB13093 (0.1µg/ml) staining of Human Cerebral Cortex lysate (35µg protein in RIPA buffer). Detected by chemiluminescence.

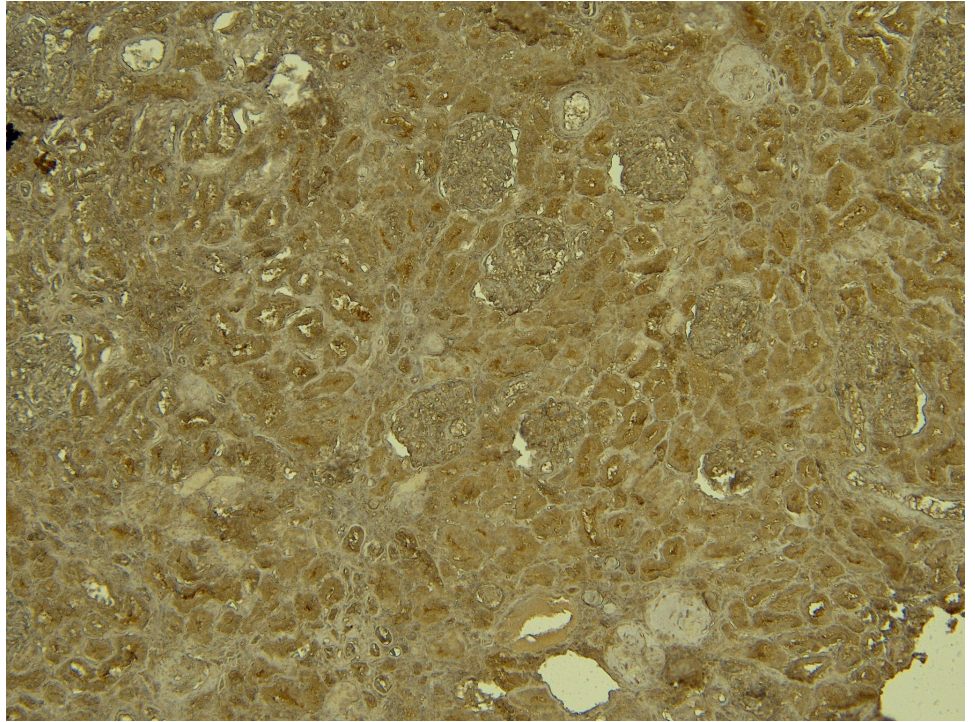


EB13093 (6 $\mu$ g/ml) staining of paraffin embedded Human Colon. Heat induced antigen retrieval with citrate buffer pH 6, HRP-staining.

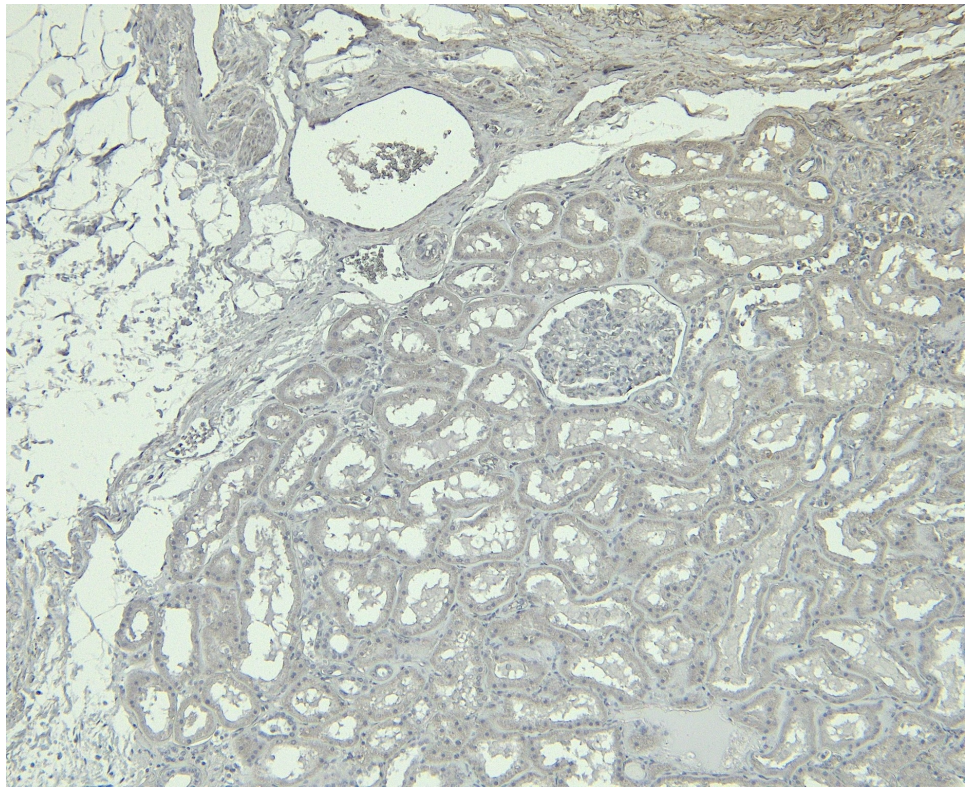


EB13093 Negative Control showing staining of paraffin embedded Human Colon, with no primary antibody.





EB13093 (4 $\mu$ g/ml) staining of paraffin embedded Human Kidney. Heat induced antigen retrieval with citrate buffer pH 6, HRP-staining.



EB13093 Negative Control showing staining of paraffin embedded Human Kidney, with no primary antibody.