



UK Office

Everest Biotech Ltd

Cherwell Innovation Centre
77 Heyford Park
Upper Heyford
Oxfordshire
OX25 5HD
UK

Enquiries:

info@everestbiotech.com

Sales:

sales@everestbiotech.com

Tech support:

support@everestbiotech.com

Tel: +44 (0)1869 238326

Fax: +44 (0)1869 238327

US Office

Everest Biotech c/o Abcore

405 Maple Street, Suite A106
Ramona,
CA 92065
USA

Inquiries:

info@everestbiotech.com

Sales:

usasales@everestbiotech.com

Tech support:

support@everestbiotech.com

Tel: 888-320-4628 (toll-free)

Fax: 888-841-9041

www.everestbiotech.com

**Research Use Only. Not for
diagnostic or therapeutic use.**

EB05475 - Goat Anti-KLF2 / LKLF Antibody

Size: 100µg specific antibody in 200µl



Target Protein

Principal Names: KLF2, Kruppel-like factor 2 (lung), LKLF, Kruppel-like factor LKLF, lung Kruppel-like zinc finger transcription factor

Official Symbol: KLF2

Accession Number(s): NP_057354.1

Human GeneID(s): [10365](#)

Non-Human GeneID(s): 16598 (mouse)

Immunogen

Peptide with sequence ALSEPILPSFST-C, from the N Terminus of the protein sequence according to NP_057354.1.

Please note the [peptide](#) is available for sale.

Purification and Storage

Purified from goat serum by ammonium sulphate precipitation followed by antigen affinity chromatography using the immunizing peptide.

Supplied at 0.5 mg/ml in Tris saline, 0.02% sodium azide, pH7.3 with 0.5% bovine serum albumin.

Aliquot and store at -20°C. Minimize freezing and thawing.

Applications Tested

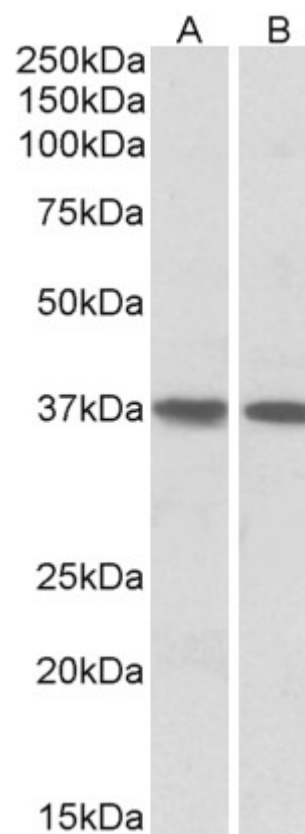
Peptide ELISA: antibody detection limit dilution 1:16000.

Western blot: Approx 37kDa band observed in Human Heart and Lung lysates (calculated MW of 37.4kDa according to NP_057354.1). Recommended concentration: 1-3µg/ml. Primary incubation was 1 hour. Preliminary testing was unsuccessful on Rat Brain and Mouse Heart for this particular batch.

Species Reactivity

Tested: Human

Expected from sequence similarity: Human, Mouse, Rat, Dog, Pig, Cow



EB05475 (1 μ g/ml) staining of Human Heart (A) and Lung (B) lysates (35 μ g protein in RIPA buffer). Detected by chemiluminescence.