



UK Office

Everest Biotech Ltd

Cherwell Innovation Centre
77 Heyford Park
Upper Heyford
Oxfordshire
OX25 5HD
UK

Enquiries:

info@everestbiotech.com

Sales:

sales@everestbiotech.com

Tech support:

support@everestbiotech.com

Tel: +44 (0)1869 238326

www.everestbiotech.com

**Research Use Only. Not for
diagnostic or therapeutic use.**

EB05473 - Goat Anti-KLF4 / GKLF Antibody

Size: 100µg specific antibody in 200µl



Target Protein

Principal Names: KLF4, GKLF, Kruppel-like factor 4 (gut), EZF, endothelial Kruppel-like zinc finger protein

Official Symbol: KLF4

Accession Number(s): NP_004226.2

Human GeneID(s): [9314](#)

Immunogen

Peptide with sequence AVSDALLPSFST-C, from the N Terminus of the protein sequence according to NP_004226.2.

Please note the [peptide](#) is available for sale.

Purification and Storage

Purified from goat serum by ammonium sulphate precipitation followed by antigen affinity chromatography using the immunizing peptide.

Supplied at 0.5 mg/ml in Tris saline, 0.02% sodium azide, pH7.3 with 0.5% bovine serum albumin.

Aliquot and store at -20°C. Minimize freezing and thawing.

Applications Tested

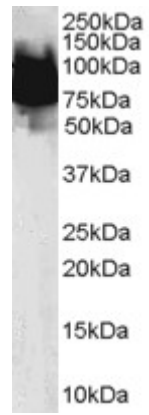
Peptide ELISA: antibody detection limit dilution 1:64000.

Western blot: Experiments gave strong bands at 75-90kDa and a faint 50-kDa band in Human Duodenal lysate after 0.1µg/ml antibody staining. These bands correspond to earlier findings in literature (Piccinni et al, J. Biol. Chem., Vol. 279 (10), 9103-9114). All these bands were successfully blocked by incubation with the immunizing peptide.
Recommended concentration: 0.1-0.3µg/ml.

Species Reactivity

Tested: Human

Expected from sequence similarity: Human, Mouse, Rat, Cow



EB05473 (0.1 µg/ml) staining of Human Duodenum lysate (35 µg protein in RIPA buffer). Primary incubation was 1 hour. Detected by chemiluminescence.