



## UK Office

### Everest Biotech Ltd

Cherwell Innovation Centre  
77 Heyford Park  
Upper Heyford  
Oxfordshire  
OX25 5HD  
UK

Enquiries:

[info@everestbiotech.com](mailto:info@everestbiotech.com)

Sales:

[sales@everestbiotech.com](mailto:sales@everestbiotech.com)

Tech support:

[support@everestbiotech.com](mailto:support@everestbiotech.com)

Tel: +44 (0)1869 238326

Fax: +44 (0)1869 238327

## US Office

### Everest Biotech c/o Abcore

405 Maple Street, Suite A106  
Ramona,  
CA 92065  
USA

Inquiries:

[info@everestbiotech.com](mailto:info@everestbiotech.com)

Sales:

[usasales@everestbiotech.com](mailto:usasales@everestbiotech.com)

Tech support:

[support@everestbiotech.com](mailto:support@everestbiotech.com)

Tel: 888-320-4628 (toll-free)

Fax: 888-841-9041

[www.everestbiotech.com](http://www.everestbiotech.com)

**Research Use Only. Not for  
diagnostic or therapeutic use.**

## EB05473 - Goat Anti-KLF4 / GKLF Antibody

Size: 100µg specific antibody in 200µl



## Target Protein

**Principal Names:** KLF4, GKLF, Kruppel-like factor 4 (gut), EZF, endothelial Kruppel-like zinc finger protein

**Official Symbol:** KLF4

**Accession Number(s):** NP\_004226.2

**Human GeneID(s):** [9314](#)

## Immunogen

Peptide with sequence AVSDALLPSFST-C, from the N Terminus of the protein sequence according to NP\_004226.2.

Please note the [peptide](#) is available for sale.

## Purification and Storage

Purified from goat serum by ammonium sulphate precipitation followed by antigen affinity chromatography using the immunizing peptide.

Supplied at 0.5 mg/ml in Tris saline, 0.02% sodium azide, pH7.3 with 0.5% bovine serum albumin.

Aliquot and store at -20°C. Minimize freezing and thawing.

## Applications Tested

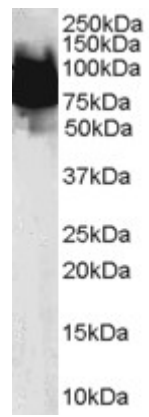
**Peptide ELISA:** antibody detection limit dilution 1:64000.

**Western blot:** Experiments gave strong bands at 75-90kDa and a faint 50-kDa band in Human Duodenal lysate after 0.1µg/ml antibody staining. These bands correspond to earlier findings in literature (Piccinni et al, J. Biol. Chem., Vol. 279 (10), 9103-9114). All these bands were successfully blocked by incubation with the immunizing peptide.  
Recommended concentration: 0.1-0.3µg/ml.

## Species Reactivity

**Tested:** Human

**Expected from sequence similarity:** Human, Mouse, Rat, Cow



EB05473 (0.1µg/ml) staining of Human Duodenum lysate (35µg protein in RIPA buffer). Primary incubation was 1 hour. Detected by chemiluminescence.