

## UK Office

### Everest Biotech Ltd

Cherwell Innovation Centre  
77 Heyford Park  
Upper Heyford  
Oxfordshire  
OX25 5HD  
UK

Enquiries:

[info@everestbiotech.com](mailto:info@everestbiotech.com)

Sales:

[sales@everestbiotech.com](mailto:sales@everestbiotech.com)

Tech support:

[support@everestbiotech.com](mailto:support@everestbiotech.com)

Tel: +44 (0)1869 238326

[www.everestbiotech.com](http://www.everestbiotech.com)

**Research Use Only. Not for  
diagnostic or therapeutic use.**

## EB07673 - Goat Anti-KLK2 Antibody

Size: 100µg specific antibody in 200µl



### Target Protein

**Principal Names:** KLK2, kallikrein-related peptidase 2, KLK2A2, MGC12201, hK2, glandular kallikrein 2, kallikrein 2, prostatic

**Official Symbol:** KLK2

**Accession Number(s):** NP\_005542.1; NP\_001002231.1

**Human GeneID(s):** [3817](#)

**Important Comments:** This antibody is expected to recognize both reported isoforms (NP\_005542.1; NP\_001002231.1).

### Immunogen

Peptide with sequence C-KHQSLRPDEDSSHD, from the internal region of the protein sequence according to NP\_005542.1; NP\_001002231.1.

Please note the [peptide](#) is available for sale.

### Purification and Storage

Purified from goat serum by ammonium sulphate precipitation followed by antigen affinity chromatography using the immunizing peptide.

Supplied at 0.5 mg/ml in Tris saline, 0.02% sodium azide, pH7.3 with 0.5% bovine serum albumin.

Aliquot and store at -20°C. Minimize freezing and thawing.

### Applications Tested

**Peptide ELISA:** antibody detection limit dilution 1:64000.

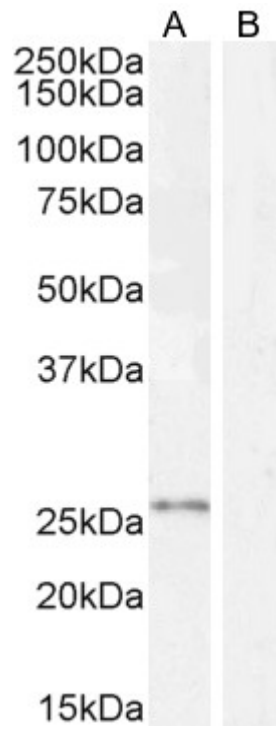
**Western blot:** Approx 26kDa band observed in lysates of cell line HeLa, which was successfully blocked by incubation with the immunizing peptide (calculated MW of 28.7 according to NP\_005542.1 and 24.7kDa according to NP\_001002231.1 ). Recommended concentration: 0.5-2 µg/ml. Primary incubation 1 hour at room temperature.

**IHC:** Paraffin embedded Human Prostate. Recommended concentration: 2.5-8µg/ml.

### Species Reactivity

**Tested:** Human

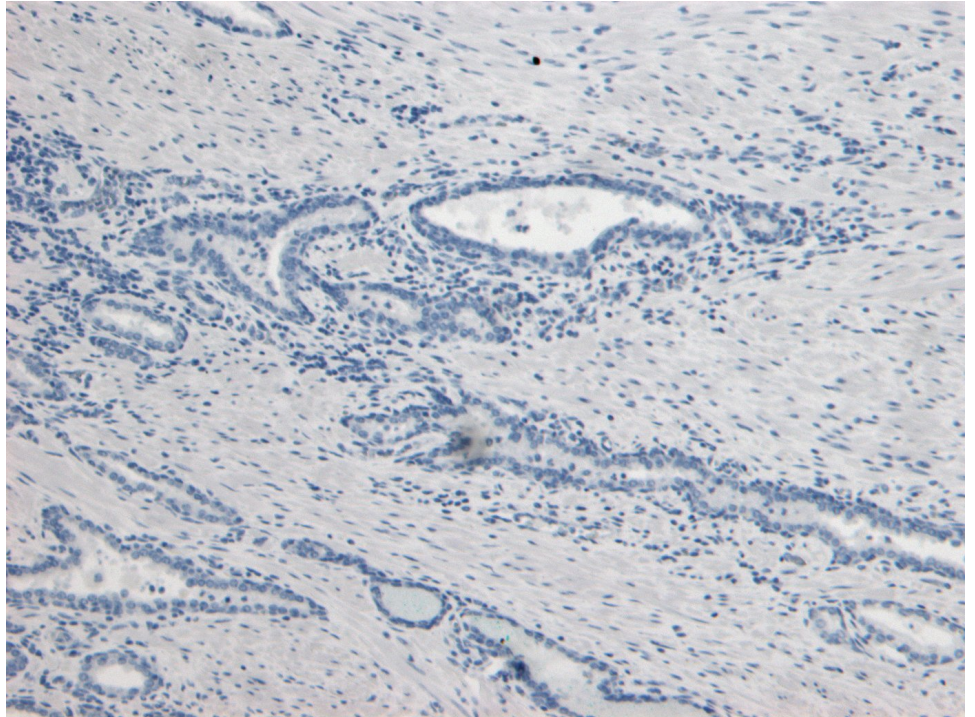
**Expected from sequence similarity:** Human



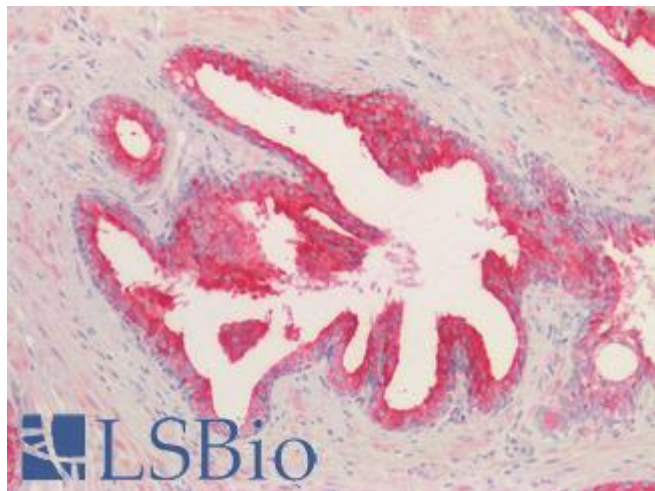
EB07673 (1 $\mu$ g/ml) staining of HeLa cell lysate (A) + peptide (B) (35 $\mu$ g protein in RIPA buffer). Detected by chemiluminescence.



EB07673 (8 $\mu$ g/ml) staining of paraffin embedded Human Prostate. Heat induced antigen retrieval with citrate buffer pH 6, HRP-staining.



EB07673 Negative Control showing staining of paraffin embedded Human Prostate, with no primary antibody.



EB07673 (2.5 $\mu$ g/ml) staining of paraffin embedded Human Prostate. Steamed antigen retrieval with citrate buffer pH 6, AP-staining.