



UK Office

Everest Biotech Ltd

Cherwell Innovation Centre
77 Heyford Park
Upper Heyford
Oxfordshire
OX25 5HD
UK

Enquiries:

info@everestbiotech.com

Sales:

sales@everestbiotech.com

Tech support:

support@everestbiotech.com

Tel: +44 (0)1869 238326

Fax: +44 (0)1869 238327

US Office

Everest Biotech c/o Abcore

405 Maple Street, Suite A106
Ramona,
CA 92065
USA

Inquiries:

info@everestbiotech.com

Sales:

usasales@everestbiotech.com

Tech support:

support@everestbiotech.com

Tel: 888-320-4628 (toll-free)

Fax: 888-841-9041

www.everestbiotech.com

**Research Use Only. Not for
diagnostic or therapeutic use.**

EB07673 - Goat Anti-KLK2 Antibody

Size: 100µg specific antibody in 200µl



Target Protein

Principal Names: KLK2, kallikrein-related peptidase 2, KLK2A2, MGC12201, hK2, glandular kallikrein 2, kallikrein 2, prostatic

Official Symbol: KLK2

Accession Number(s): NP_005542.1; NP_001002231.1

Human GeneID(s): [3817](#)

Important Comments: This antibody is expected to recognize both reported isoforms (NP_005542.1; NP_001002231.1).

Immunogen

Peptide with sequence C-KHQSLRPDEDSSHD, from the internal region of the protein sequence according to NP_005542.1; NP_001002231.1.

Please note the [peptide](#) is available for sale.

Purification and Storage

Purified from goat serum by ammonium sulphate precipitation followed by antigen affinity chromatography using the immunizing peptide.

Supplied at 0.5 mg/ml in Tris saline, 0.02% sodium azide, pH7.3 with 0.5% bovine serum albumin.

Aliquot and store at -20°C. Minimize freezing and thawing.

Applications Tested

Peptide ELISA: antibody detection limit dilution 1:64000.

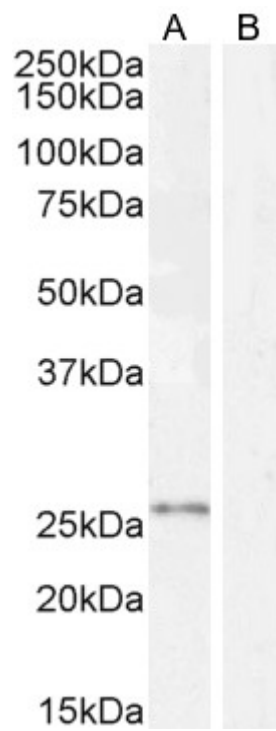
Western blot: Approx 26kDa band observed in lysates of cell line HeLa, which was successfully blocked by incubation with the immunizing peptide (calculated MW of 28.7 according to NP_005542.1 and 24.7kDa according to NP_001002231.1). Recommended concentration: 0.5-2 µg/ml. Primary incubation 1 hour at room temperature.

IHC: Paraffin embedded Human Prostate. Recommended concentration: 2.5-8µg/ml.

Species Reactivity

Tested: Human

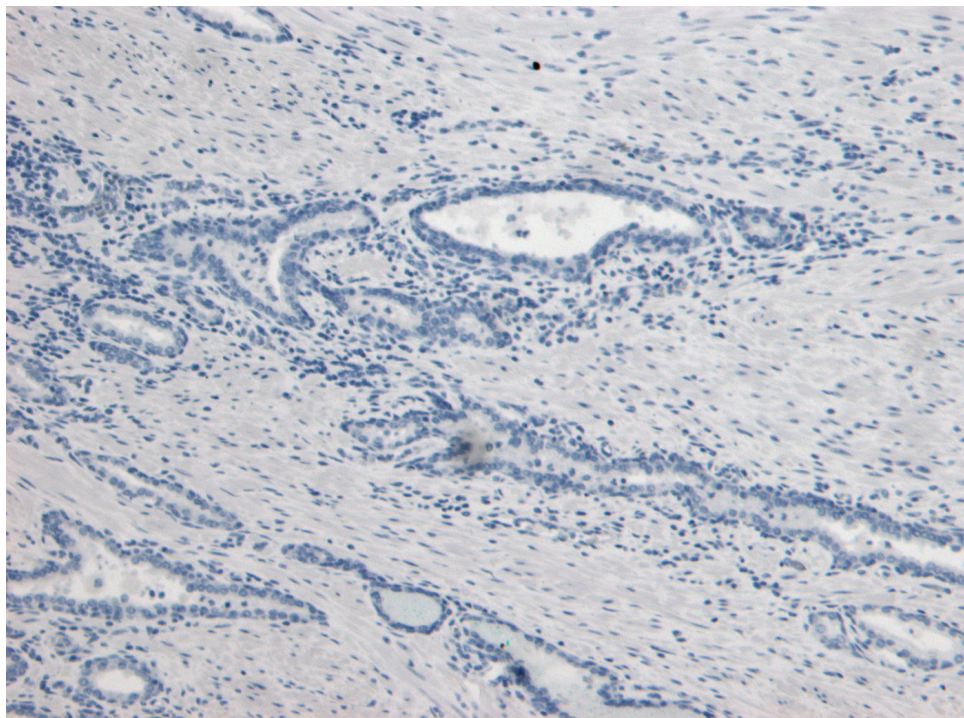
Expected from sequence similarity: Human



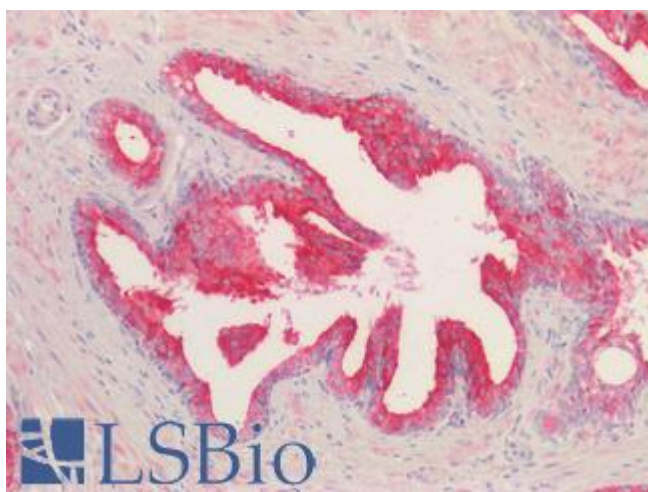
EB07673 (1 μ g/ml) staining of HeLa cell lysate (A) + peptide (B) (35 μ g protein in RIPA buffer). Detected by chemiluminescence.



EB07673 (8 μ g/ml) staining of paraffin embedded Human Prostate. Heat induced antigen retrieval with citrate buffer pH 6, HRP-staining.



EB07673 Negative Control showing staining of paraffin embedded Human Prostate, with no primary antibody.



EB07673 (2.5µg/ml) staining of paraffin embedded Human Prostate. Steamed antigen retrieval with citrate buffer pH 6, AP-staining.