



International Office

Everest Biotech Ltd

Vector Laboratories, Inc.
6737 Mowry Ave
Newark, CA 94560
United States

Customer Service:

customerservice@vectorlabs.com

Technical Service:

technical@vectorlabs.com

Tel: +1 (800) 227-6666

www.everestbiotech.com

**Research Use Only. Not for
diagnostic or therapeutic use.**

EB09307 - Goat Anti-Klk6 / neurosin (mouse) Antibody

Size: 100µg specific antibody in 200µl



Target Protein

Principal Names: Klk6, kallikrein related-peptidase 6, A1849898, Bssp, Klk29, Klk7, Prss18, Prss9, neurosin, kallikrein 29, kallikrein 6, kallikrein 7, protease M, protease, serine, 18, protease, serine, 9

Official Symbol: Klk6

Accession Number(s): NP_035307.1

Non-Human GeneID(s): 19144 (mouse), 29245 (rat)

Immunogen

Peptide with sequence KEKPGVYTDVCTHIR, from the C Terminus of the protein sequence according to NP_035307.1.

Please note the [peptide](#) is available for sale.

Purification and Storage

Purified from goat serum by ammonium sulphate precipitation followed by antigen affinity chromatography using the immunizing peptide.

Supplied at 0.5 mg/ml in Tris saline, 0.02% sodium azide, pH7.3 with 0.5% bovine serum albumin.

Aliquot and store at -20°C. Minimize freezing and thawing.

Applications Tested

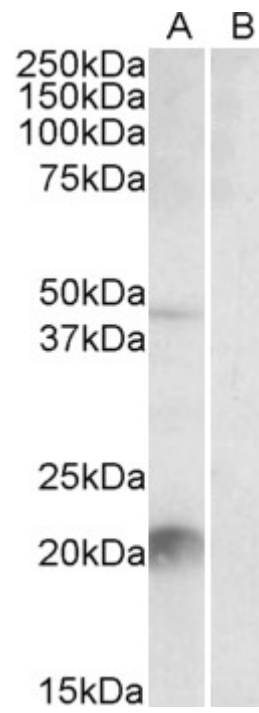
Peptide ELISA: antibody detection limit dilution 1:16000.

Western blot: Approx 22kDa band observed in Mouse Liver lysates (calculated MW of 27.5kDa according to NP_035307.1). Recommended concentration: 1-3µg/ml. An additional band of unknown identity was also consistently observed at 48kDa. Both bands were successfully blocked by incubation with the immunising peptide. We would appreciate any feedback from people in the field - have any results been reported with other antibodies/lysates? Have any further splice variants/modified forms been reported?

Species Reactivity

Tested: Mouse

Expected from sequence similarity: Mouse, Rat, Cow



EB09307 staining (2 μ g/ml) of Mouse Liver lysate (35 μ g protein in RIPA buffer) with (B) and without (A) blocking with the immunising peptide. Primary incubation was 1 hour. Detected by chemiluminescence.