



UK Office

Everest Biotech Ltd

Cherwell Innovation Centre
77 Heyford Park
Upper Heyford
Oxfordshire
OX25 5HD
UK

Enquiries:

info@everestbiotech.com

Sales:

sales@everestbiotech.com

Tech support:

support@everestbiotech.com

Tel: +44 (0)1869 238326

www.everestbiotech.com

**Research Use Only. Not for
diagnostic or therapeutic use.**

EB07011 - Goat Anti-Klotho Antibody

Size: 100µg specific antibody in 200µl



Target Protein

Principal Names: KL, klotho

Official Symbol: KL

Accession Number(s): NP_004786.2; NP_710150.1

Human GeneID(s): [9365](#)

Important Comments: This antibody is expected to recognise both reported isoforms (NP_004786.2; NP_710150.1).

Immunogen

Peptide with sequence C-KRDDAKYMYLKK, from the internal region of the protein sequence according to NP_004786.2; NP_710150.1.

Please note the [peptide](#) is available for sale.

Purification and Storage

Purified from goat serum by ammonium sulphate precipitation followed by antigen affinity chromatography using the immunizing peptide.

Supplied at 0.5 mg/ml in Tris saline, 0.02% sodium azide, pH7.3 with 0.5% bovine serum albumin.

Aliquot and store at -20°C. Minimize freezing and thawing.

Applications Tested

Peptide ELISA: antibody detection limit dilution 1:4000.

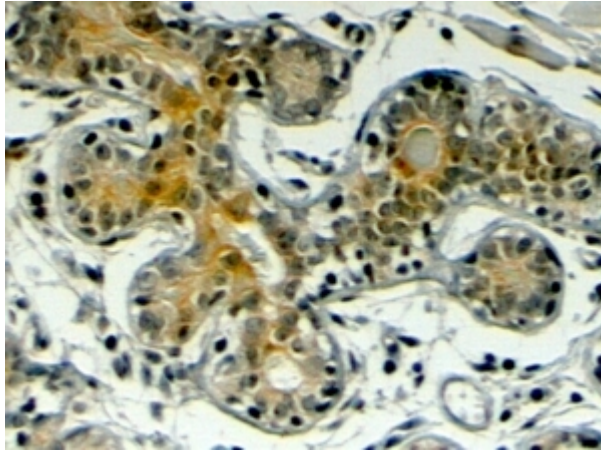
Western blot: Preliminary experiments in Human Brain, Duodenum, Placenta and Prostate lysates gave no specific signal but low background at antibody concentration up to 1µg/ml.

IHC: In paraffin embedded Human Breast shows cytoplasm staining in luminal epithelial cells of ducts, while Human Placenta shows membranous staining. Recommended concentration: 4-6µg/ml.

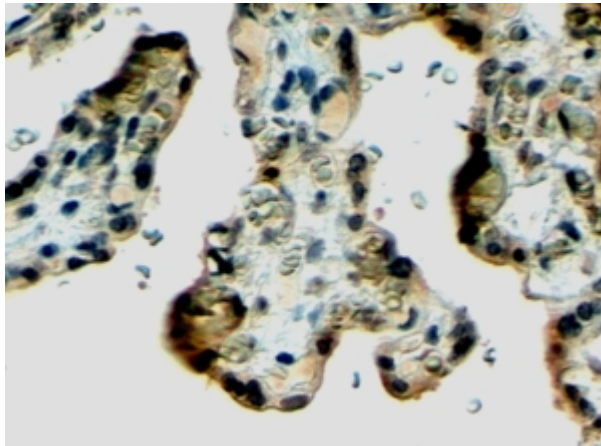
Species Reactivity

Tested: Human

Expected from sequence similarity: Human, Mouse, Rat



EB07011 (4µg/ml) staining of paraffin embedded Human Breast. Steamed antigen retrieval with citrate buffer pH 6, HRP-staining.



EB07011 (4µg/ml) staining of paraffin embedded Human Placenta. Steamed antigen retrieval with citrate buffer pH 6, HRP-staining.