



## UK Office

### Everest Biotech Ltd

Cherwell Innovation Centre  
77 Heyford Park  
Upper Heyford  
Oxfordshire  
OX25 5HD  
UK

Enquiries:

[info@everestbiotech.com](mailto:info@everestbiotech.com)

Sales:

[sales@everestbiotech.com](mailto:sales@everestbiotech.com)

Tech support:

[support@everestbiotech.com](mailto:support@everestbiotech.com)

Tel: +44 (0)1869 238326

[www.everestbiotech.com](http://www.everestbiotech.com)

**Research Use Only. Not for  
diagnostic or therapeutic use.**

## EB06232 - Goat Anti-KPNA1 / Importin alpha 5 Antibody

Size: 100µg specific antibody in 200µl



### Target Protein

**Principal Names:** KPNA1, importin alpha 5, RCH2, SRP1, NPI-1, karyopherin alpha 1 (importin alpha 5), IPOA5, importin-alpha-S1, karyopherin alpha 1, nucleoprotein interactor 1, recombination activating gene cohort 2

**Official Symbol:** KPNA1

**Accession Number(s):** NP\_002255.3

**Human GeneID(s):** [3836](#)

**Non-Human GeneID(s):** 16646 (mouse), 288064 (rat)

### Immunogen

Peptide with sequence TTPGKENFRLKSY-C, from the N Terminus of the protein sequence according to NP\_002255.3.

Please note the [peptide](#) is available for sale.

### Purification and Storage

Purified from goat serum by ammonium sulphate precipitation followed by antigen affinity chromatography using the immunizing peptide.

Supplied at 0.5 mg/ml in Tris saline, 0.02% sodium azide, pH7.3 with 0.5% bovine serum albumin.

Aliquot and store at -20°C. Minimize freezing and thawing.

### Applications Tested

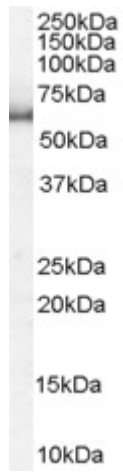
**Peptide ELISA:** antibody detection limit dilution 1:32000.

**Western blot:** Approx 60kDa band observed in lysates of cell lines HEK293 and HeLa (calculated MW of 60.3kDa according to NP\_002255.1). Recommended concentration: 1-3µg/ml.

### Species Reactivity

**Tested:** Human

**Expected from sequence similarity:** Human, Mouse, Rat, Dog, Pig, Cow



EB06232 staining (1 $\mu$ g/ml) of HeLa lysate (RIPA buffer, 35 $\mu$ g total protein per lane). Primary incubated for 1 hour. Detected by chemiluminescence.